

A large, stylized graphic of a key, rendered in yellow and grey, positioned centrally behind the title text. The key is oriented vertically, with the head of the key at the top and the shaft pointing downwards. The background behind the key consists of overlapping yellow and blue shapes.

STATISTICS

IMPLEMENTATION OF THE PROPERTY LAWS IN BOSNIA AND HERZEGOVINA

30 September 2002

EXPLANATORY NOTE

- **These statistics reflect the implementation of the property laws in Bosnia and Herzegovina since the passing of the property laws as amended in October 1999.**
- **These statistics are collected every month by staff of OSCE, UNHCR and OHR in the field on the basis of information provided to them by local authorities.**
- **The number of claims is equal to the total number of properties on which a claim was filed with the Municipal authorities.**
- **The number of decisions is the total number of decisions issued by the Municipal authorities.**
- **The number of repossessions is the total number of occupancy right holders or owners that have collected their keys from the municipal authorities.**
- **The implementation ratio is the total number of repossessions divided by the total number of claims expressed in percentage form.**
- **These statistics do not include information on decisions and repossessions on destroyed property, business premises or land.**
- **In some municipalities, the current implementation ratio is lower than the implementation ratio as at the end of 2000. This is due to the exclusion of destroyed property from the number of repossessions, but not from the number of claims.**
- **In some municipalities, the number of claims for socially owned property has increased since last month regardless of the deadline for submission of claims for socially owned property. This is due to the filing of requests for the enforcement of CRPC claims .**

REVIEW OF IMPLEMENTATION OF THE PROPERTY LAWS IN FEDERATION OF BIH

30 September 2002

MUNICIPALITIES / CANTONS	Socially Owned Property			Private Property			Total			Implement-ation Ratio*	Previous Impl. Ratio	Implementatin Ratio		Last Update
	No.of Claims	No.of Decisions	Repossessions	No.of Claims	No.of Decisions	Repossessions	No.of Claims	No.of Decisions	Repossessions			end 2001	end 2000	
Bihac	1,620	1,618	1,129	1,374	1,215	569	2,994	2,833	1,698	56.71%	56.07%	56.26%	38.31%	Sep-02
Bosanska Krupa	489	488	435	2,047	1,523	1,129	2,536	2,011	1,564	61.67%	60.07%	55.67%	29.29%	Sep-02
Bosanski Petrovac	425	420	352	1,167	1,096	893	1,592	1,516	1,245	78.20%	76.81%	76.92%	45.51%	Sep-02
Buzim	7	7	7	1	1	1	8	8	8	100.00%	100.00%	100.00%	25.00%	Aug-01
Cazin	107	107	88	69	68	64	176	175	152	86.36%	84.57%	66.29%	60.47%	Sep-02
Kljuc	827	814	603	840	758	621	1,667	1,572	1,224	73.43%	70.53%	47.09%	24.46%	Sep-02
Sanski Most	998	971	745	2,982	1,798	1,591	3,980	2,769	2,336	58.69%	56.60%	41.51%	24.90%	Sep-02
Velika Kladusa	460	447	301	55	42	41	515	489	342	66.41%	65.76%	70.92%	70.92%	Sep-02
Total UNA-SANA:	4,933	4,872	3,660	8,535	6,501	4,909	13,468	11,373	8,569	63.62%	61.99%	53.12%	32.80%	
Domaljevac - Samac	9	9	9	4	4	3	13	13	12	92.31%	92.31%	83.33%	33.33%	Sep-02
Odzak	234	230	219	191	163	154	425	393	373	87.76%	87.74%	77.69%	28.04%	Sep-02
Orasje	152	152	146	169	169	168	321	321	314	97.82%	97.50%	64.62%	43.75%	Sep-02
Total POSAVINA:	395	391	374	364	336	325	759	727	699	92.09%	91.94%	72.01%	34.06%	
Banovici	1,025	1,025	855	72	72	49	1,097	1,097	904	82.41%	80.77%	63.43%	31.69%	Sep-02
Celic	40	40	32	186	186	183	226	226	215	95.13%	93.78%	77.00%	69.15%	Sep-02
Doboj - East	0	0	0	10	10	10	10	10	10	100.00%	100.00%	100.00%	55.56%	Oct-01
Gracanica	246	246	217	459	459	429	705	705	646	91.63%	90.29%	68.16%	43.62%	Sep-02
Gradacac	251	251	231	389	379	294	640	630	525	82.03%	81.03%	69.33%	53.14%	Sep-02
Kalesija	111	111	111	440	438	325	551	549	436	79.13%	78.36%	83.86%	32.57%	Sep-02
Kladanj	177	177	132	177	146	105	354	323	237	66.95%	63.35%	44.65%	16.31%	Sep-02
Lukavac	796	796	775	835	550	300	1,631	1,346	1,075	65.91%	33.74%	37.17%	31.65%	Sep-02
Sapna	23	23	15	119	117	98	142	140	113	79.58%	79.29%	43.07%	40.16%	Sep-02
Srebrenik	78	78	54	1,023	852	418	1,101	930	472	42.87%	39.49%	17.78%	21.46%	Sep-02
Teocak	7	7	6	11	10	9	18	17	15	83.33%	73.33%	29.63%	6.67%	Sep-02
Tuzla	4,770	3,837	3,402	2,226	1,811	1,565	6,996	5,648	4,967	71.00%	69.39%	48.10%	23.20%	Sep-02
Zivinice	414	414	370	450	444	414	864	858	784	90.74%	89.06%	62.78%	42.39%	Sep-02
Total TUZLA:	7,938	7,005	6,200	6,397	5,474	4,199	14,335	12,479	10,399	72.54%	64.27%	50.48%	29.30%	
Breza	181	181	181	399	389	226	580	570	407	70.17%	68.57%	53.97%	55.44%	Sep-02
Doboj - South	0	0	0	15	15	15	15	15	15	100.00%	100.00%	93.33%	73.33%	Aug-02
Kakanj	1,130	970	734	1,178	1,178	830	2,308	2,148	1,564	67.76%	64.15%	48.52%	37.28%	Sep-02
Maglaj	619	619	619	1,913	1,846	1,657	2,532	2,465	2,276	89.89%	86.30%	75.42%	27.77%	Sep-02
Olovo	227	227	165	216	200	104	443	427	269	60.72%	57.40%	45.60%	16.33%	Sep-02
Tesanj	157	157	128	421	421	389	578	578	517	89.45%	87.89%	70.68%	46.20%	Sep-02
Usora	3	3	3	10	10	10	13	13	13	100.00%	100.00%	76.92%	87.50%	Jul-02
Vares	969	969	868	33	33	28	1,002	1,002	896	89.42%	88.52%	76.35%	52.96%	Sep-02
Visoko	338	335	244	1,198	1,100	632	1,536	1,435	876	57.03%	54.17%	29.58%	30.81%	Sep-02
Zavidovici	1,226	1,226	997	2,893	1,423	889	4,119	2,649	1,886	45.79%	44.79%	30.82%	22.30%	Sep-02
Zenica	5,775	4,865	3,799	1,857	1,594	715	7,632	6,459	4,514	59.15%	57.22%	44.40%	21.45%	Sep-02
Zepce	324	324	323	1,306	1,290	1,262	1,630	1,614	1,585	97.24%	97.05%	84.05%	84.05%	Sep-02
Total ZENICA-DOBOJ:	10,949	9,876	8,061	11,439	9,499	6,757	22,388	19,375	14,818	66.19%	64.17%	50.84%	32.19%	
Foca - Ustikolina	50	50	49	92	92	76	142	142	125	88.03%	87.32%	16.52%	5.91%	Sep-02
Gorazde	1,246	1,246	979	284	282	227	1,530	1,528	1,206	78.82%	75.93%	51.06%	19.98%	Sep-02
Pale - Praca	2	2	2	5	5	5	7	7	7	100.00%	100.00%	100.00%	22.73%	Jun-01
Total BOSNIA-PODRINJE:	1,298	1,298	1,030	381	379	308	1,679	1,677	1,338	79.69%	77.00%	43.10%	17.69%	
Bugojno	1,366	1,255	1,184	2,902	2,679	2,589	4,268	3,934	3,773	88.40%	78.49%	82.09%	56.34%	Sep-02
Busovaca	102	102	102	693	684	659	795	786	761	95.72%	95.84%	98.68%	70.27%	Sep-02
Donji Vakuf	340	340	266	842	726	352	1,182	1,066	618	52.28%	50.00%	32.18%	26.24%	Sep-02

Source: Local Authorities / PLIP (Property Legislation Implementation Plan) Focal Points

REVIEW OF IMPLEMENTATION OF THE PROPERTY LAWS IN FEDERATION OF BIH

30 September 2002

MUNICIPALITIES / CANTONS	Socially Owned Property			Private Property			Total			Implement-ation Ratio*	Previous Impl. Ratio	Implementatin Ratio		Last Update
	No. of Claims	No. of Decisions	Repossessions	No. of Claims	No. of Decisions	Repossessions	No. of Claims	No. of Decisions	Repossessions			end 2001	end 2000	
Fojnica	236	236	222	455	421	421	691	657	643	93.05%	93.05%	87.37%	81.59%	Sep-02
Gornji Vakuf - Uskoplje	184	164	144	179	163	125	363	327	269	74.10%	73.33%	56.79%	36.58%	Sep-02
Jajce	1,595	1,486	1,132	1,638	1,403	1,313	3,233	2,889	2,445	75.63%	62.11%	47.05%	26.93%	Sep-02
Kiseljak	112	112	75	1,955	1,982	1,935	2,067	2,094	2,010	97.24%	96.56%	93.46%	81.57%	Sep-02
Kresevo	18	18	18	130	130	129	148	148	147	99.32%	99.32%	95.95%	88.81%	Sep-02
Novi Travnik	2,068	2,068	1,840	321	321	294	2,389	2,389	2,134	89.33%	88.23%	71.75%	40.91%	Sep-02
Travnik	1,467	1,450	1,048	1,718	1,361	1,198	3,185	2,811	2,246	70.52%	68.31%	69.89%	63.37%	Sep-02
Vitez	592	556	522	753	753	747	1,345	1,309	1,269	94.35%	94.32%	91.91%	67.34%	Sep-02
Total CENTRAL BOSNIA:	8,080	7,787	6,553	11,586	10,623	9,762	19,666	18,410	16,315	82.96%	77.91%	73.26%	55.81%	
Capljina	740	556	505	997	721	701	1,737	1,277	1,206	69.43%	65.36%	44.72%	7.25%	Sep-02
Citluk	5	5	5	3	3	3	8	8	8	100.00%	100.00%	100.00%	100.00%	Sep-00
Jablanica	178	174	133	134	119	70	312	293	203	65.06%	61.56%	59.35%	40.61%	Sep-02
Konjic	869	869	822	1,700	1,314	1,309	2,569	2,183	2,131	82.95%	81.29%	68.52%	41.92%	Sep-02
Mostar - North	76	60	22	834	535	497	910	595	519	57.03%	53.30%	28.86%	4.05%	Sep-02
Mostar - South	0	0	0	137	106	87	137	106	87	63.50%	60.87%	21.76%	48.37%	Sep-02
Mostar - West	2,397	1,722	1,614	169	25	47	2,566	1,747	1,661	64.73%	60.71%	36.96%	11.29%	Sep-02
Mostar Central Zone	525	494	130	113	84	39	638	578	169	26.49%	26.54%	21.63%	12.09%	Sep-02
Mostar Old Town	1,436	1,211	947	1,079	1,014	486	2,515	2,225	1,433	56.98%	54.56%	33.26%	35.38%	Sep-02
Mostar South-East	3	1	0	661	649	395	664	650	395	59.49%	54.88%	61.23%	8.65%	Sep-02
Mostar South-West	3,801	2,916	2,317	305	168	120	4,106	3,084	2,437	59.35%	56.36%	32.56%	10.14%	Sep-02
Neum	28	28	21	177	164	157	205	192	178	86.83%	86.21%	82.45%	59.88%	Sep-02
Prozor / Rama	216	215	213	172	172	167	388	387	380	97.94%	96.60%	88.92%	76.53%	Sep-02
Stolac	393	376	332	461	447	438	854	823	770	90.16%	88.88%	50.85%	1.64%	Sep-02
Total HERZEGOVINA-NERETVA:	10,667	8,627	7,061	6,942	5,521	4,516	17,609	14,148	11,577	65.74%	62.90%	41.11%	16.84%	
Grude	5	5	1	0	0	0	5	5	1	20.00%	20.00%	0.00%	0.00%	Sep-02
Ljubuski	62	62	53	213	211	194	275	273	247	89.82%	88.00%	65.55%	43.25%	Sep-02
Posusje	5	3	1	0	0	0	5	3	1	20.00%	20.00%	40.00%	16.67%	Sep-02
Siroki Brijeg	0	0	0	2	2	2	2	2	2	100.00%	50.00%	0.00%	0.00%	Sep-02
Total WEST HERZEGOVINA:	72	70	55	215	213	196	287	283	251	87.46%	85.37%	65.25%	42.91%	
Centar / Stari Grad	6,032	4,276	2,926	1,161	1,066	527	7,193	5,342	3,453	48.01%	47.34%	33.24%	13.22%	Sep-02
Ilidza / Hadzici	3,901	3,901	2,038	3,721	3,012	1,612	7,622	6,913	3,650	47.89%	43.97%	35.77%	22.14%	Sep-02
Novi Grad	10,467	10,467	6,624	2,077	1,953	1,831	12,544	12,420	8,455	67.40%	63.19%	49.54%	24.42%	Sep-02
Novo Sarajevo	9,755	9,755	4,991	1,269	1,264	1,094	11,024	11,019	6,085	55.20%	54.14%	42.75%	22.26%	Sep-02
Vogosca / Ilijas	2,342	2,342	1,369	3,135	2,796	1,256	5,477	5,138	2,625	47.93%	38.15%	33.74%	23.05%	Sep-02
Total SARAJEVO:	32,497	30,741	17,948	11,363	10,091	6,320	43,860	40,832	24,268	55.33%	51.44%	40.92%	21.44%	
Bosansko Grahovo	46	46	41	54	54	50	100	100	91	91.00%	82.00%	27.92%	42.19%	Sep-02
Drvar	914	914	836	1,878	1,878	1,522	2,792	2,792	2,358	84.46%	82.50%	37.39%	5.53%	Sep-02
Glamoc	387	351	260	404	389	324	791	740	584	73.83%	51.08%	29.05%	4.59%	Sep-02
Kupres	275	234	189	238	231	186	513	465	375	73.10%	72.21%	59.77%	10.40%	Sep-02
Livno	330	302	275	240	225	209	570	527	484	84.91%	84.04%	76.67%	53.75%	Sep-02
Tomislavgrad	59	55	49	97	93	84	156	148	133	85.26%	83.77%	71.34%	46.67%	Sep-02
Total CANTON 10:	2,011	1,902	1,650	2,911	2,870	2,375	4,922	4,772	4,025	81.78%	75.64%	42.83%	12.90%	
Total FEDERATION :	78,840	72,569	52,592	60,133	51,507	39,667	138,973	124,076	92,259	66.39%	62.40%	49.40%	28.75%	
%		92%	67%		86%	66%		89%	66%					

* Implementation Ratio = Total number of repossessions / Total number of claims expressed in percentage form

Source: Local Authorities / PLIP (Property Legislation Implementation Plan) Focal Points

REVIEW OF IMPLEMENTATION OF THE PROPERTY LAWS IN REPUBLIKA SRPSKA

30 September 2002

MUNICIPALITIES	Socially Owned Property			Private Property			Total			Implement-ation Ratio*	Previous Impl. Ratio	Implementation Ratio		Last Update
	No.of Claims	No.of Decisions	Repossessions	No.of Claims	No.of Decisions	Repossessions	No.of Claims	No.of Decisions	Repossessions			end 2001	end 2000	
Banja Luka	9,222	5,275	4,195	7,937	3,708	3,302	17,159	8,983	7,497	43.69%	41.35%	24.86%	8.56%	Sep-02
B.Dubica / Kozarska Dubica	209	203	136	1,160	1,033	740	1,369	1,236	876	63.99%	63.19%	49.96%	17.95%	Sep-02
B.Gradiska / Gradiska	347	347	318	4,202	3,651	2,840	4,549	3,998	3,158	69.42%	60.00%	42.17%	22.85%	Sep-02
B.Novi / Novi Grad	516	495	392	1,263	1,212	986	1,779	1,707	1,378	77.46%	76.74%	65.13%	16.84%	Sep-02
B.Samac / Samac	404	381	363	1,348	1,127	983	1,752	1,508	1,346	76.83%	72.98%	47.33%	18.77%	Sep-02
Berkovici	1	1	1	5	5	5	6	6	6	100.00%	100.00%	80.00%	0.00%	Jul-02
Bijeljina	654	519	371	8,468	4,911	4,891	9,122	5,430	5,262	57.68%	55.83%	36.96%	15.68%	Sep-02
Bileca	134	134	120	288	280	224	422	414	344	81.52%	76.07%	61.03%	23.44%	Sep-02
Bosanska / Srpska Kostajnica	27	27	11	346	346	295	373	373	306	82.04%	80.38%	69.01%	47.60%	Sep-02
Bosanski / Srpski Brod	1,051	964	664	1,322	627	473	2,373	1,591	1,137	47.91%	43.48%	21.48%	12.93%	Sep-02
Bratunac	166	151	130	1,873	1,550	598	2,039	1,701	728	35.70%	52.45%	15.77%	3.54%	Sep-02
Cajnice	94	94	67	233	232	127	327	326	194	59.33%	55.69%	39.20%	4.45%	Sep-02
Celinac	59	57	43	256	257	195	315	314	238	75.56%	72.73%	51.48%	34.60%	Sep-02
Derвента	1,154	826	816	4,794	3,452	3,283	5,948	4,278	4,099	68.91%	67.54%	24.27%	9.32%	Sep-02
Doboj	2,838	2,093	2,067	6,387	3,646	2,694	9,225	5,739	4,761	51.61%	50.13%	37.91%	15.60%	Sep-02
Foca / Srbinje	1,045	1,045	767	1,234	1,234	515	2,279	2,279	1,282	56.25%	49.31%	24.20%	2.04%	Sep-02
Gacko	275	252	218	359	310	221	634	562	439	69.24%	67.25%	39.68%	14.23%	Sep-02
Han Pijesak	60	58	44	2	1	0	62	59	44	70.97%	70.97%	56.25%	10.19%	Sep-02
Kalinovik	64	64	50	30	30	24	94	94	74	78.72%	75.53%	64.13%	39.19%	Sep-02
Kotor Varos	295	294	222	1,305	1,258	868	1,600	1,552	1,090	68.13%	66.71%	47.96%	63.65%	Sep-02
Laktasi	31	31	27	610	590	415	641	621	442	68.95%	68.95%	55.45%	37.14%	Aug-02
Ljubinje	12	12	12	43	43	37	55	55	49	89.09%	87.27%	22.37%	14.52%	Sep-02
Lopare	95	95	93	738	738	737	833	833	830	99.64%	96.64%	75.53%	33.07%	Sep-02
Milici	62	62	36	184	180	90	246	242	126	51.22%	50.20%	7.86%	7.86%	Sep-02
Modrica	524	524	486	2,396	2,396	1,821	2,920	2,920	2,307	79.01%	74.28%	39.01%	10.13%	Sep-02
Mrkonjic Grad	190	176	165	859	859	610	1,049	1,035	775	73.88%	70.05%	61.27%	18.69%	Sep-02
Nevesinje	51	38	33	577	527	471	628	565	504	80.25%	78.44%	33.92%	24.81%	Sep-02
Odzak / Vukosavlje	0	0	0	490	490	451	490	490	451	92.04%	92.04%	77.92%	19.90%	Sep-02
Osmaci	3	3	3	278	278	265	281	281	268	95.37%	92.09%	30.29%	8.58%	Sep-02
Pale	211	211	170	582	582	414	793	793	584	73.64%	70.38%	53.34%	19.44%	Sep-02
Pelagicevo	7	7	5	156	156	88	163	163	93	57.06%	53.37%	22.36%	16.39%	Sep-02
Petrovo	35	35	28	77	76	69	112	111	97	86.61%	83.49%	66.29%	51.47%	Sep-02
Prijedor	2,034	1,623	1,273	8,578	6,363	3,509	10,612	7,986	4,782	45.06%	45.06%	24.52%	8.94%	Aug-02
Prnjavor	155	154	104	2,113	1,566	1,221	2,268	1,720	1,325	58.42%	55.96%	33.48%	15.60%	Sep-02
Ribnik / Kljuc	25	22	21	8	6	4	33	28	25	75.76%	75.76%	80.65%	73.08%	Apr-02
Rogatica	392	392	333	1,655	815	610	2,047	1,207	943	46.07%	43.32%	24.32%	6.61%	Sep-02
Rudo	170	170	152	346	346	238	516	516	390	75.58%	72.23%	32.07%	3.49%	Sep-02
Sekovici	51	51	41	97	97	92	148	148	133	89.86%	87.16%	70.63%	38.41%	Sep-02
Sipovo	114	108	83	509	483	392	623	591	475	76.24%	62.04%	37.79%	28.66%	Sep-02
Skender Vakuf / Knezevo	78	78	56	269	265	208	347	343	264	76.08%	73.49%	49.57%	23.17%	Sep-02
Sokolac	81	80	48	518	507	236	599	587	284	47.41%	45.99%	26.57%	11.27%	Sep-02
Srbac	60	60	60	162	162	162	222	222	222	100.00%	98.65%	78.87%	53.88%	Sep-02
Srebrenica	531	531	415	1,712	1,396	509	2,243	1,927	924	41.19%	36.50%	8.29%	2.18%	Sep-02
Srpska Ilidza / S.Novo Sarajevo	260	252	214	713	654	556	973	906	770	79.14%	77.14%	23.78%	9.31%	Sep-02
Srpsko Gorazde	12	12	9	380	396	208	392	408	217	55.36%	52.30%	21.20%	3.61%	Sep-02
Srpsko Orasje	1	1	1	16	16	16	17	17	17	100.00%	100.00%	100.00%	100.00%	Jun-02

REVIEW OF IMPLEMENTATION OF THE PROPERTY LAWS IN REPUBLIKA SRPSKA

30 September 2002

MUNICIPALITIES	Socially Owned Property			Private Property			Total			Implement- ation Ratio*	Previous Impl. Ratio	Implementation Ratio		Last Update
	No. of Claims	No. of Decisions	Repossessions	No. of Claims	No. of Decisions	Repossessions	No. of Claims	No. of Decisions	Repossessions			end 2001	end 2000	
Teslic	767	658	603	1,925	1,510	1,403	2,692	2,168	2,006	74.52%	72.86%	34.10%	12.08%	Sep-02
Trebinje	752	752	651	1,164	841	690	1,916	1,593	1,341	69.99%	67.67%	42.18%	12.81%	Sep-02
Trnovo RS	89	89	59	326	321	119	415	410	178	42.89%	41.75%	44.16%	41.23%	Sep-02
Ugljevik	134	133	119	591	589	428	725	722	547	75.45%	69.63%	38.55%	9.20%	Sep-02
Visegrad	495	498	368	2,166	929	697	2,661	1,427	1,065	40.02%	37.91%	22.20%	3.67%	Sep-02
Vlasenica	351	335	300	1,503	1,238	744	1,854	1,573	1,044	56.31%	53.22%	21.88%	16.58%	Sep-02
Zvornik	1,052	883	686	5,031	2,149	1,164	6,083	3,032	1,850	30.41%	38.02%	16.18%	3.15%	Sep-02
Total RS :	27,440	21,356	17,649	79,584	56,434	41,938	107,024	77,790	59,587	55.68%	53.98%	30.64%	13.21%	
%		78%	64%		71%	53%		73%	56%					

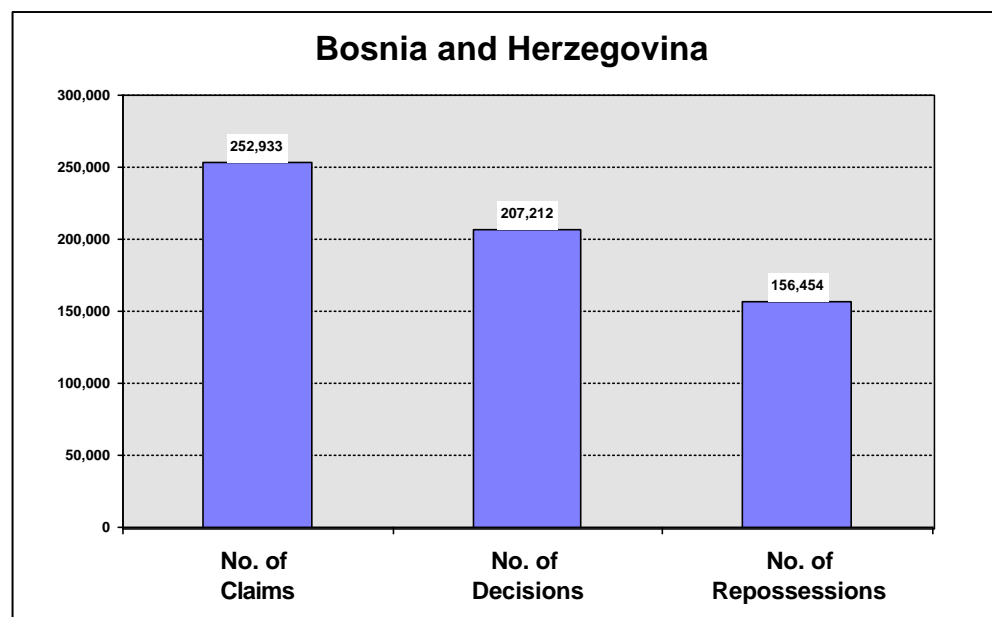
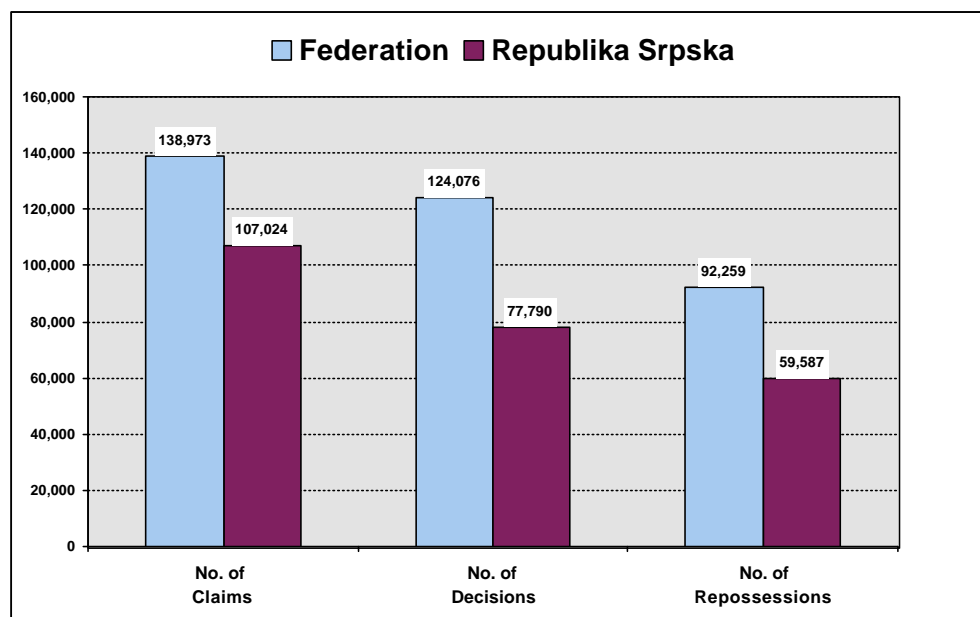
* Implementation Ratio = Total number of repossessions / Total number of claims expressed in percentage form

IMPLEMENTATION OF THE PROPERTY LAWS IN BOSNIA AND HERZEGOVINA - SUMMARY

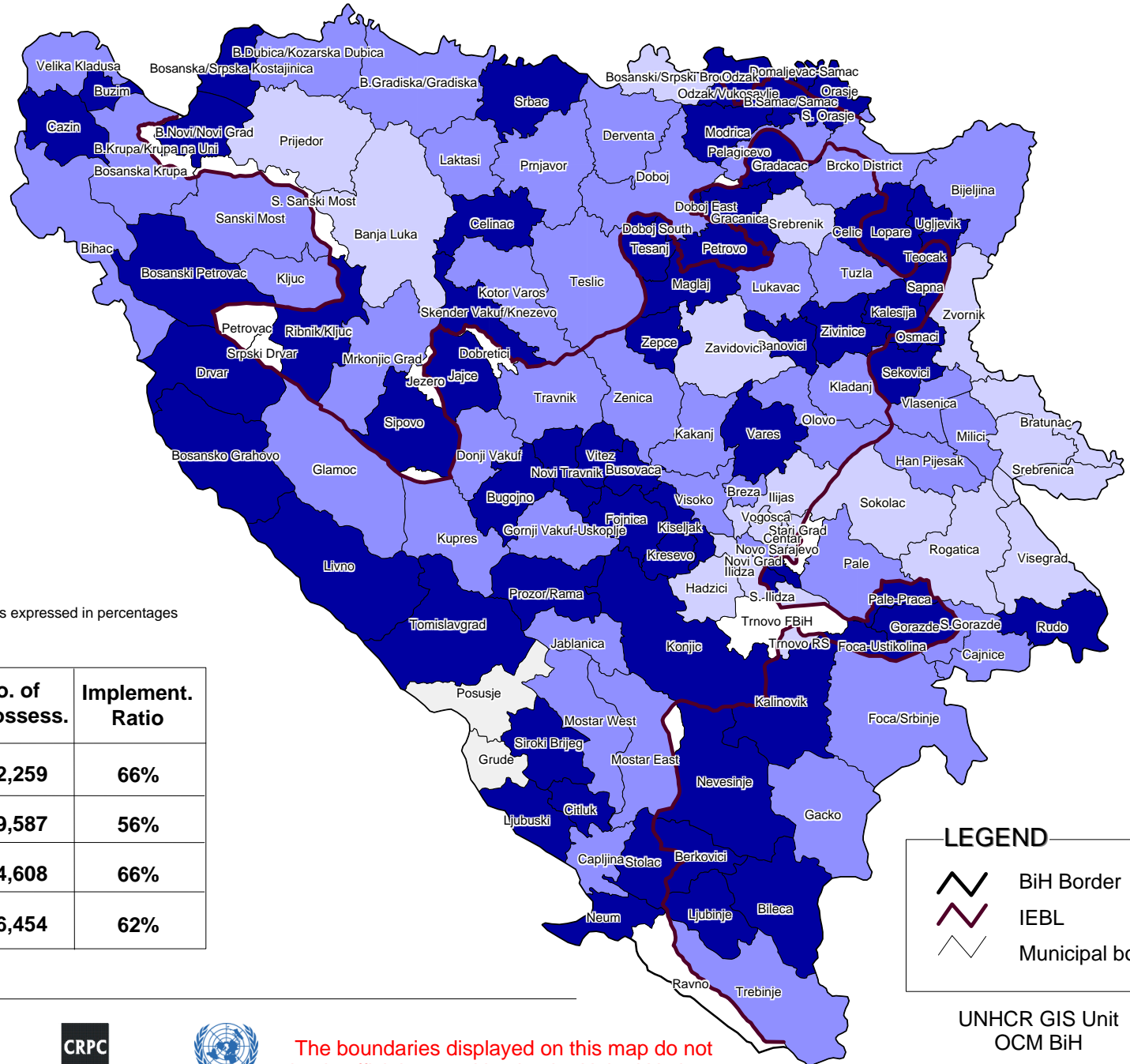
30 September 2002

Bosnia and Herzegovina	Socially Owned Property			Private Property			Total			Implement-ation Ratio*	Previous Implement. Ratio	Implementation Ratio	
	No. of Claims	No. of Decisions	No. of Repossessions	No. of Claims	No. of Decisions	No. of Repossessions	No. of Claims	No. of Decisions	No. of Repossessions			as at end 2001	as at end 2000
Total FEDERATION :	78,840	72,569	52,592	60,133	51,507	39,667	138,973	124,076	92,259	66%	62%	49%	29%
%		92%	67%		86%	66%		89%	66%				
Total REPUBLIKA SRPSKA :	27,440	21,356	17,649	79,584	56,434	41,938	107,024	77,790	59,587	56%	54%	31%	13%
%		78%	64%		71%	53%		73%	56%				
BRCKO DISTRICT :	2,092	1,707	1,610	4,844	3,639	2,998	6,936	5,346	4,608	66%	64%	39%	14%
%		82%	77%		75%	62%		77%	66%				
GRAND TOTAL :	108,372	95,632	71,851	144,561	111,580	84,603	252,933	207,212	156,454	62%	59%	41%	21%
%		88%	66%		77%	59%		82%	62%				

* Implementation Ratio = Total number of repossessions / Total number of claims expressed in percentage form



IMPLEMENTATION OF THE PROPERTY LAWS IN BOSNIA AND HERZEGOVINA



Implementation Ratio *

- more than 75%
- 50% to 75%
- 25% to 50%
- less than 25%
- w/o claims

* Implementation Ratio = Number of repossessions / Number of claims expressed in percentages

	No. of Claims	No. of Repossess.	Implement. Ratio
Federation of BiH (FBiH)	138,973	92,259	66%
Republika Srpska (RS)	107,024	59,587	56%
Brcko District	6,936	4,608	66%
Total BiH	252,933	156,454	62%

LEGEND

- BiH Border
- IEBL
- Municipal border



The boundaries displayed on this map do not imply official recognition by the United Nations

UNHCR GIS Unit
OCM BiH
Date: 30 September 2002