

A large, stylized graphic of a key, colored in shades of yellow and grey, positioned centrally behind the title text.

STATISTICS

IMPLEMENTATION OF THE PROPERTY LAWS IN BOSNIA AND HERZEGOVINA

31 August 2002

EXPLANATORY NOTE

- **These statistics reflect the implementation of the property laws in Bosnia and Herzegovina since the passing of the property laws as amended in October 1999.**
- **These statistics are collected every month by staff of OSCE, UNHCR and OHR in the field on the basis of information provided to them by local authorities.**
- **The number of claims is equal to the total number of properties on which a claim was filed with the Municipal authorities.**
- **The number of decisions is the total number of decisions issued by the Municipal authorities.**
- **The number of repossessions is the total number of occupancy right holders or owners that have collected their keys from the municipal authorities.**
- **The implementation ratio is the total number of repossessions divided by the total number of claims expressed in percentage form.**
- **These statistics do not include information on decisions and repossessions on destroyed property, business premises or land.**
- **In some municipalities, the current implementation ratio is lower than the implementation ratio as at the end of 2000. This is due to the exclusion of destroyed property from the number of repossessions, but not from the number of claims.**
- **In some municipalities, the number of claims for socially owned property has increased since last month regardless of the deadline for submission of claims for socially owned property. This is due to the filing of requests for the enforcement of CRPC claims .**

REVIEW OF IMPLEMENTATION OF THE PROPERTY LAWS IN FEDERATION OF BIH

31 August 2002

MUNICIPALITIES / CANTONS	Socially Owned Property			Private Property			Total			Implement-ation Ratio*	Previous Impl. Ratio	Implementatin Ratio		Last Update
	No.of Claims	No.of Decisions	Repossessions	No.of Claims	No.of Decisions	Repossessions	No.of Claims	No.of Decisions	Repossessions			end 2001	end 2000	
Bihac	1,620	1,618	1,114	1,369	1,171	562	2,989	2,789	1,676	56.07%	55.81%	56.26%	38.31%	Aug-02
Bosanska Krupa	488	457	422	2,029	1,472	1,090	2,517	1,929	1,512	60.07%	59.60%	55.67%	29.29%	Aug-02
Bosanski Petrovac	425	420	347	1,162	1,083	872	1,587	1,503	1,219	76.81%	75.00%	76.92%	45.51%	Aug-02
Buzim	7	7	7	1	1	1	8	8	8	100.00%	100.00%	100.00%	25.00%	Aug-01
Cazin	107	107	87	68	65	61	175	172	148	84.57%	82.56%	66.29%	60.47%	Aug-02
Kljuc	827	813	579	839	744	596	1,666	1,557	1,175	70.53%	68.53%	47.09%	24.46%	Aug-02
Sanski Most	998	962	737	2,965	1,739	1,506	3,963	2,701	2,243	56.60%	54.50%	41.51%	24.90%	Aug-02
Velika Kladusa	460	443	297	54	41	41	514	484	338	65.76%	65.88%	70.92%	70.92%	Aug-02
Total UNA-SANA:	4,932	4,827	3,590	8,487	6,316	4,729	13,419	11,143	8,319	61.99%	60.75%	53.12%	32.80%	
Domaljevac - Samac	9	9	9	4	4	3	13	13	12	92.31%	92.31%	83.33%	33.33%	Aug-01
Odzak	234	230	218	190	163	154	424	393	372	87.74%	81.22%	77.69%	28.04%	Aug-02
Orasje	152	152	146	168	168	166	320	320	312	97.50%	93.57%	64.62%	43.75%	Aug-02
Total POSAVINA:	395	391	373	362	335	323	757	726	696	91.94%	86.53%	72.01%	34.06%	
Banovici	1,025	1,025	838	72	72	48	1,097	1,097	886	80.77%	78.76%	63.43%	31.69%	Aug-02
Celic	40	40	31	185	185	180	225	225	211	93.78%	93.33%	77.00%	69.15%	Aug-02
Doboj - East	0	0	0	10	10	10	10	10	10	100.00%	100.00%	100.00%	55.56%	Oct-01
Gracanica	246	232	216	454	454	416	700	686	632	90.29%	88.86%	68.16%	43.62%	Aug-02
Gradacac	251	251	231	387	378	286	638	629	517	81.03%	80.54%	69.33%	53.14%	Aug-02
Kalesija	111	111	111	439	434	320	550	545	431	78.36%	86.94%	83.86%	32.57%	Aug-02
Kladanj	177	171	132	175	140	91	352	311	223	63.35%	58.97%	44.65%	16.31%	Aug-02
Lukavac	796	794	774	2,263	949	258	3,059	1,743	1,032	33.74%	32.77%	37.17%	31.65%	Aug-02
Sapna	23	23	15	117	117	96	140	140	111	79.29%	74.29%	43.07%	40.16%	Aug-02
Srebrenik	78	78	54	1,016	820	378	1,094	898	432	39.49%	37.78%	17.78%	21.46%	Aug-02
Teocak	7	6	5	8	7	6	15	13	11	73.33%	73.33%	29.63%	6.67%	Aug-02
Tuzla	4,770	3,799	3,327	2,175	1,711	1,492	6,945	5,510	4,819	69.39%	67.48%	48.10%	23.20%	Aug-02
Zivinice	414	414	368	445	434	397	859	848	765	89.06%	85.71%	62.78%	42.39%	Aug-02
Total TUZLA:	7,938	6,944	6,102	7,746	5,711	3,978	15,684	12,655	10,080	64.27%	63.74%	50.48%	29.30%	
Breza	181	181	180	398	375	217	579	556	397	68.57%	67.07%	53.97%	55.44%	Aug-02
Doboj - South	0	0	0	15	15	15	15	15	15	100.00%	93.33%	93.33%	73.33%	Aug-02
Kakanj	1,128	966	721	1,162	1,115	748	2,290	2,081	1,469	64.15%	60.50%	48.52%	37.28%	Aug-02
Maglaj	619	619	619	1,906	1,756	1,560	2,525	2,375	2,179	86.30%	83.19%	75.42%	27.77%	Aug-02
Olovo	227	227	157	226	175	103	453	402	260	57.40%	54.42%	45.60%	16.33%	Aug-02
Tesanj	157	157	127	421	421	381	578	578	508	87.89%	76.87%	70.68%	46.20%	Aug-02
Usora	3	3	3	10	10	10	13	13	13	100.00%	100.00%	76.92%	87.50%	Jul-02
Vares	969	969	859	33	33	28	1,002	1,002	887	88.52%	88.09%	76.35%	52.96%	Aug-02
Visoko	338	334	243	1,183	1,060	581	1,521	1,394	824	54.17%	51.83%	29.58%	30.81%	Aug-02
Zavidovici	1,226	1,200	956	2,893	1,423	889	4,119	2,623	1,845	44.79%	44.09%	30.82%	22.30%	Aug-02
Zenica	5,775	4,771	3,685	1,839	1,514	672	7,614	6,285	4,357	57.22%	55.84%	44.40%	21.45%	Aug-02
Zepce	324	324	323	1,301	1,282	1,254	1,625	1,606	1,577	97.05%	96.79%	84.05%	84.05%	Aug-02
Total ZENICA-DOBOJ:	10,947	9,751	7,873	11,387	9,179	6,458	22,334	18,930	14,331	64.17%	62.32%	50.84%	32.19%	
Foca - Ustikolina	50	50	49	92	92	75	142	142	124	87.32%	83.80%	16.52%	5.91%	Aug-02
Gorazde	1,246	1,246	944	283	282	217	1,529	1,528	1,161	75.93%	72.51%	51.06%	19.98%	Aug-02
Pale - Praca	2	2	2	5	5	5	7	7	7	100.00%	100.00%	100.00%	22.73%	Jun-01
Total BOSNIA-PODRINJE:	1,298	1,298	995	380	379	297	1,678	1,677	1,292	77.00%	73.58%	43.10%	17.69%	
Bugojno	1,366	1,120	1,085	2,893	2,562	2,258	4,259	3,682	3,343	78.49%	83.07%	82.09%	56.34%	Aug-02
Busovaca	102	102	102	692	682	659	794	784	761	95.84%	95.96%	98.68%	70.27%	Aug-02
Donji Vakuf	340	339	260	816	694	318	1,156	1,033	578	50.00%	45.72%	32.18%	26.24%	Aug-02

Source: Local Authorities / PLIP (Property Legislation Implementation Plan) Focal Points

REVIEW OF IMPLEMENTATION OF THE PROPERTY LAWS IN FEDERATION OF BiH

31 August 2002

MUNICIPALITIES / CANTONS	Socially Owned Property			Private Property			Total			Implement-ation Ratio*	Previous Impl. Ratio	Implementatin Ratio		Last Update
	No. of Claims	No. of Decisions	Repossessions	No. of Claims	No. of Decisions	Repossessions	No. of Claims	No. of Decisions	Repossessions			end 2001	end 2000	
Fojnica	236	236	222	455	421	421	691	657	643	93.05%	92.76%	87.37%	81.59%	Aug-02
Gornji Vakuf - Uskoplje	183	159	144	177	163	120	360	322	264	73.33%	72.22%	56.79%	36.58%	Aug-02
Jajce	1,595	1,401	1,084	1,638	1,019	924	3,233	2,420	2,008	62.11%	58.12%	47.05%	26.93%	Aug-02
Kiseljak	112	112	74	1,953	1,953	1,920	2,065	2,065	1,994	96.56%	96.31%	93.46%	81.57%	Aug-02
Kresevo	18	18	18	130	130	129	148	148	147	99.32%	99.32%	95.95%	88.81%	Aug-02
Novi Travnik	2,068	2,068	1,816	320	320	291	2,388	2,388	2,107	88.23%	83.81%	71.75%	40.91%	Aug-02
Travnik	1,467	1,450	1,038	1,701	1,289	1,126	3,168	2,739	2,164	68.31%	67.96%	69.89%	63.37%	Aug-02
Vitez	592	553	522	746	746	740	1,338	1,299	1,262	94.32%	93.92%	91.91%	67.34%	Aug-02
Total CENTRAL BOSNIA:	8,079	7,558	6,365	11,521	9,979	8,906	19,600	17,537	15,271	77.91%	77.19%	73.26%	55.81%	
Capljina	740	534	468	992	699	664	1,732	1,233	1,132	65.36%	61.37%	44.72%	7.25%	Aug-02
Citluk	5	5	5	3	3	3	8	8	8	100.00%	100.00%	100.00%	100.00%	Sep-00
Jablanica	175	172	124	132	111	65	307	283	189	61.56%	59.93%	59.35%	40.61%	Aug-02
Konjic	869	869	816	1,696	1,274	1,269	2,565	2,143	2,085	81.29%	80.55%	68.52%	41.92%	Aug-02
Mostar - North	76	59	22	864	498	479	940	557	501	53.30%	47.42%	28.86%	4.05%	Aug-02
Mostar - South	0	0	0	138	106	84	138	106	84	60.87%	58.82%	21.76%	48.37%	Aug-02
Mostar - West	2,460	1,670	1,549	169	25	47	2,629	1,695	1,596	60.71%	58.12%	36.96%	11.29%	Aug-02
Mostar Central Zone	523	487	129	110	83	39	633	570	168	26.54%	26.51%	21.63%	12.09%	Aug-02
Mostar Old Town	1,436	1,192	912	1,073	985	457	2,509	2,177	1,369	54.56%	52.30%	33.26%	35.38%	Aug-02
Mostar South-East	3	1	0	653	583	360	656	584	360	54.88%	50.69%	61.23%	8.65%	Aug-02
Mostar South-West	3,801	2,823	2,202	305	146	112	4,106	2,969	2,314	56.36%	53.24%	32.56%	10.14%	Aug-02
Neum	28	28	21	175	163	154	203	191	175	86.21%	87.00%	82.45%	59.88%	Aug-02
Prozor / Rama	210	210	208	172	172	161	382	382	369	96.60%	95.03%	88.92%	76.53%	Aug-02
Stolac	393	393	329	461	443	430	854	836	759	88.88%	85.13%	50.85%	1.64%	Aug-02
Total HERZEGOVINA-NERETVA:	10,719	8,443	6,785	6,943	5,291	4,324	17,662	13,734	11,109	62.90%	60.21%	41.11%	16.84%	
Grude	5	5	1	0	0	0	5	5	1	20.00%	0.00%	0.00%	0.00%	Aug-02
Ljubuski	62	62	50	213	208	192	275	270	242	88.00%	86.91%	65.55%	43.25%	Aug-02
Posusje	5	3	1	0	0	0	5	3	1	20.00%	20.00%	40.00%	16.67%	Aug-02
Siroki Brijeg	0	0	0	2	2	1	2	2	1	50.00%	0.00%	0.00%	0.00%	Aug-02
Total WEST HERZEGOVINA:	72	70	52	215	210	193	287	280	245	85.37%	83.62%	65.25%	42.91%	
Centar / Stari Grad	6,028	4,190	2,887	1,148	1,053	510	7,176	5,243	3,397	47.34%	46.43%	33.24%	13.22%	Aug-02
Ilidza / Hadzici	4,370	4,370	2,030	3,704	2,936	1,520	8,074	7,306	3,550	43.97%	42.52%	35.77%	22.14%	Aug-02
Novi Grad	10,456	10,456	6,387	2,071	1,881	1,529	12,527	12,337	7,916	63.19%	60.78%	49.54%	24.42%	Aug-02
Novo Sarajevo	9,726	9,726	4,873	1,258	1,250	1,074	10,984	10,976	5,947	54.14%	52.78%	42.75%	22.26%	Aug-02
Vogosca / Ilijas	3,441	3,793	1,308	3,102	2,766	1,188	6,543	6,559	2,496	38.15%	36.38%	33.74%	23.05%	Aug-02
Total SARAJEVO:	34,021	32,535	17,485	11,283	9,886	5,821	45,304	42,421	23,306	51.44%	49.80%	40.92%	21.44%	
Bosansko Grahovo	46	46	34	54	54	48	100	100	82	82.00%	27.92%	27.92%	42.19%	Aug-02
Drvar	911	911	820	1,866	1,824	1,471	2,777	2,735	2,291	82.50%	78.14%	37.39%	5.53%	Aug-02
Glamoc	428	319	249	547	343	249	975	662	498	51.08%	48.50%	29.05%	4.59%	Aug-02
Kupres	275	233	188	236	228	181	511	461	369	72.21%	71.12%	59.77%	10.40%	Aug-02
Livno	330	300	273	240	221	206	570	521	479	84.04%	83.16%	76.67%	53.75%	Aug-02
Tomislavgrad	59	51	46	95	93	83	154	144	129	83.77%	78.57%	71.34%	46.67%	Aug-02
Total CANTON 10:	2,049	1,860	1,610	3,038	2,763	2,238	5,087	4,623	3,848	75.64%	70.52%	42.83%	12.90%	
Total FEDERATION :	80,450	73,677	51,230	61,362	50,049	37,267	141,812	123,726	88,497	62.40%	60.68%	49.40%	28.75%	
%		92%	64%		82%	61%		87%	62%					

* Implementation Ratio = Total number of repossessions / Total number of claims expressed in percentage form

Source: Local Authorities / PLIP (Property Legislation Implementation Plan) Focal Points

REVIEW OF IMPLEMENTATION OF THE PROPERTY LAWS IN REPUBLIKA SRPSKA

31 August 2002

MUNICIPALITIES	Socially Owned Property			Private Property			Total			Implement-ation Ratio*	Previous Impl. Ratio	Implementation Ratio		Last Update
	No.of Claims	No.of Decisions	Repossessions	No.of Claims	No.of Decisions	Repossessions	No.of Claims	No.of Decisions	Repossessions			end 2001	end 2000	
Banja Luka	9,222	5,085	3,971	7,897	3,571	3,107	17,119	8,656	7,078	41.35%	38.64%	24.86%	8.56%	Aug-02
B.Dubica / Kozarska Dubica	209	199	130	1,152	1,017	730	1,361	1,216	860	63.19%	61.66%	49.96%	17.95%	Aug-02
B.Gradiska / Gradiska	407	399	307	4,593	3,596	2,693	5,000	3,995	3,000	60.00%	56.55%	42.17%	22.85%	Aug-02
B.Novi / Novi Grad	515	491	389	1,252	1,194	967	1,767	1,685	1,356	76.74%	74.39%	65.13%	16.84%	Aug-02
B.Samac / Samac	404	379	356	1,317	1,056	900	1,721	1,435	1,256	72.98%	70.18%	47.33%	18.77%	Aug-02
Berkovici	1	1	1	5	5	5	6	6	6	100.00%	100.00%	80.00%	0.00%	Jul-02
Bijeljina	653	510	356	8,437	4,612	4,719	9,090	5,122	5,075	55.83%	52.05%	36.96%	15.68%	Aug-02
Bileca	134	134	117	288	280	204	422	414	321	76.07%	72.04%	61.03%	23.44%	Aug-02
Bosanska / Srpska Kostajnica	27	27	11	345	341	288	372	368	299	80.38%	78.80%	69.01%	47.60%	Aug-02
Bosanski / Srpski Brod	1,100	988	633	1,416	602	461	2,516	1,590	1,094	43.48%	39.24%	21.48%	12.93%	Aug-02
Bratunac	166	149	117	1,569	1,391	793	1,735	1,540	910	52.45%	48.05%	15.77%	3.54%	Aug-02
Cajnice	94	94	66	231	224	115	325	318	181	55.69%	50.62%	39.20%	4.45%	Aug-02
Celinac	59	57	43	260	257	189	319	314	232	72.73%	69.50%	51.48%	34.60%	Aug-02
Derвента	1,152	798	788	4,763	3,372	3,207	5,915	4,170	3,995	67.54%	66.76%	24.27%	9.32%	Aug-02
Doboj	2,833	2,038	2,027	6,365	3,484	2,584	9,198	5,522	4,611	50.13%	47.76%	37.91%	15.60%	Aug-02
Foca / Srbinje	1,045	1,045	742	1,435	1,299	481	2,480	2,344	1,223	49.31%	43.56%	24.20%	2.04%	Aug-02
Gacko	275	251	213	351	303	208	626	554	421	67.25%	62.82%	39.68%	14.23%	Aug-02
Han Pijesak	60	58	44	2	1	0	62	59	44	70.97%	68.85%	56.25%	10.19%	Aug-02
Kalinovik	64	64	49	30	30	22	94	94	71	75.53%	74.19%	64.13%	39.19%	Aug-02
Kotor Varos	295	293	215	1,303	1,258	851	1,598	1,551	1,066	66.71%	65.72%	47.96%	63.65%	Aug-02
Laktasi	31	31	27	610	590	415	641	621	442	68.95%	64.96%	55.45%	37.14%	Aug-02
Ljubinje	12	12	12	43	43	36	55	55	48	87.27%	72.73%	22.37%	14.52%	Aug-02
Lopare	95	95	91	738	737	714	833	832	805	96.64%	95.19%	75.53%	33.07%	Aug-02
Milici	62	62	36	183	178	87	245	240	123	50.20%	48.76%	7.86%	7.86%	Aug-02
Modrica	524	524	475	2,380	2,380	1,682	2,904	2,904	2,157	74.28%	69.51%	39.01%	10.13%	Aug-02
Mrkonjic Grad	186	176	165	859	812	567	1,045	988	732	70.05%	74.41%	61.27%	18.69%	Aug-02
Nevesinje	51	37	33	566	504	451	617	541	484	78.44%	76.35%	33.92%	24.81%	Aug-02
Odzak / Vukosavlje	0	0	0	490	490	451	490	490	451	92.04%	92.04%	77.92%	19.90%	Aug-02
Osmaci	3	3	3	275	275	253	278	278	256	92.09%	88.85%	30.29%	8.58%	Aug-02
Pale	211	211	162	579	579	394	790	790	556	70.38%	66.79%	53.34%	19.44%	Aug-02
Pelagicevo	7	7	5	156	156	82	163	163	87	53.37%	50.00%	22.36%	16.39%	Aug-02
Petrovo	35	35	26	74	74	65	109	109	91	83.49%	83.33%	66.29%	51.47%	Aug-02
Prijedor	2,034	1,623	1,273	8,578	6,363	3,509	10,612	7,986	4,782	45.06%	42.80%	24.52%	8.94%	Aug-02
Prnjavor	155	151	102	2,109	1,530	1,165	2,264	1,681	1,267	55.96%	53.61%	33.48%	15.60%	Aug-02
Ribnik / Kljuc	25	22	21	8	6	4	33	28	25	75.76%	75.76%	80.65%	73.08%	Apr-02
Rogatica	392	391	321	1,688	785	580	2,080	1,176	901	43.32%	40.21%	24.32%	6.61%	Aug-02
Rudo	170	170	151	345	345	221	515	515	372	72.23%	68.35%	32.07%	3.49%	Aug-02
Sekovici	51	51	41	97	97	88	148	148	129	87.16%	76.35%	70.63%	38.41%	Aug-02
Sipovo	114	104	73	505	457	311	619	561	384	62.04%	49.51%	37.79%	28.66%	Aug-02
Skender Vakuf / Knezevo	78	78	52	269	265	203	347	343	255	73.49%	69.16%	49.57%	23.17%	Aug-02
Sokolac	81	80	47	517	505	228	598	585	275	45.99%	45.56%	26.57%	11.27%	Aug-02
Srbac	60	60	60	162	162	159	222	222	219	98.65%	91.40%	78.87%	53.88%	Aug-02
Srebrenica	531	526	383	1,762	1,254	454	2,293	1,780	837	36.50%	32.50%	8.29%	2.18%	Aug-02
Srpska Ilidza / S.Novo Sarajevo	260	252	200	711	648	549	971	900	749	77.14%	70.28%	23.78%	9.31%	Aug-02
Srpsko Gorazde	12	12	9	380	380	196	392	392	205	52.30%	49.36%	21.20%	3.61%	Aug-02
Srpsko Orasje	1	1	1	16	16	16	17	17	17	100.00%	100.00%	100.00%	100.00%	Jun-02

REVIEW OF IMPLEMENTATION OF THE PROPERTY LAWS IN REPUBLIKA SRPSKA

31 August 2002

MUNICIPALITIES	Socially Owned Property			Private Property			Total			Implement- ation Ratio*	Previous Impl. Ratio	Implementation Ratio		Last Update
	No.of Claims	No.of Decisions	Repossessions	No.of Claims	No.of Decisions	Repossessions	No.of Claims	No.of Decisions	Repossessions			end 2001	end 2000	
Teslic	767	644	590	1,919	1,491	1,367	2,686	2,135	1,957	72.86%	71.38%	34.10%	12.08%	Aug-02
Trebinje	751	751	636	1,148	788	649	1,899	1,539	1,285	67.67%	60.93%	42.18%	12.81%	Aug-02
Trnovo RS	89	87	59	323	318	113	412	405	172	41.75%	40.49%	44.16%	41.23%	Aug-02
Ugljevik	134	133	117	587	581	385	721	714	502	69.63%	66.85%	38.55%	9.20%	Aug-02
Visegrad	495	497	368	2,151	846	635	2,646	1,343	1,003	37.91%	36.13%	22.20%	3.67%	Aug-02
Vlasenica	351	332	288	1,494	1,154	694	1,845	1,486	982	53.22%	51.51%	21.88%	16.58%	Aug-02
Zvornik	1,178	863	680	5,184	2,032	1,739	6,362	2,895	2,419	38.02%	35.04%	16.18%	3.15%	Aug-02
Total RS :	27,661	21,081	17,082	79,917	54,734	40,986	107,578	75,815	58,068	53.98%	51.05%	30.64%	13.21%	
%		76%	62%		68%	51%		70%	54%					

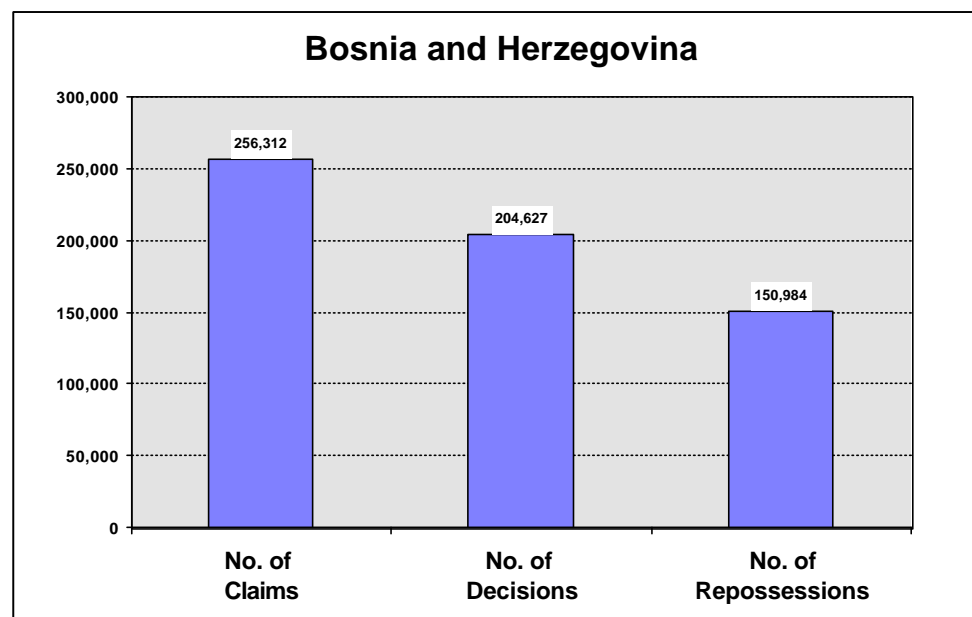
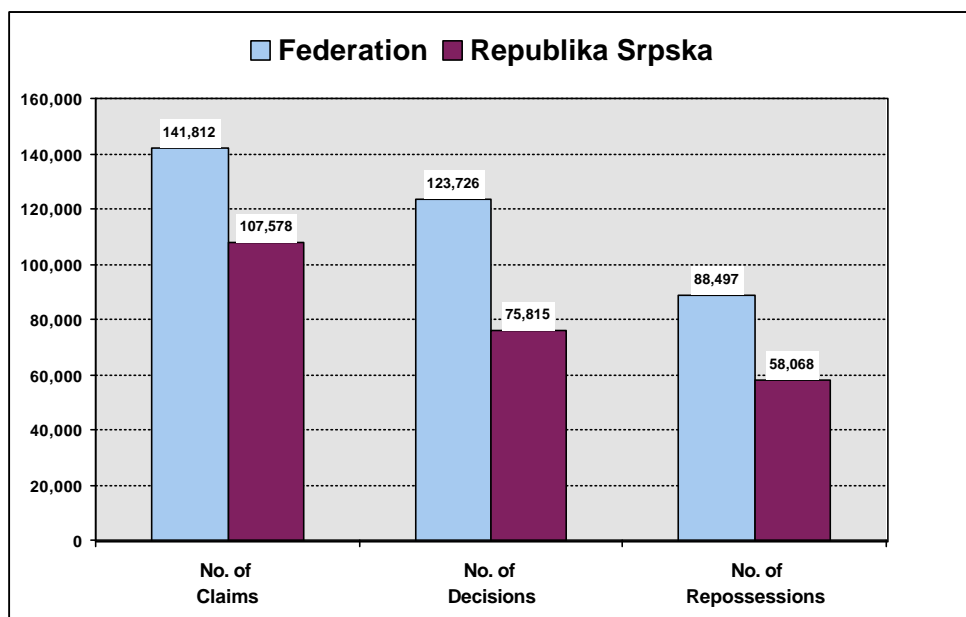
* Implementation Ratio = Total number of repossessions / Total number of claims expressed in percentage form

IMPLEMENTATION OF THE PROPERTY LAWS IN BOSNIA AND HERZEGOVINA - SUMMARY

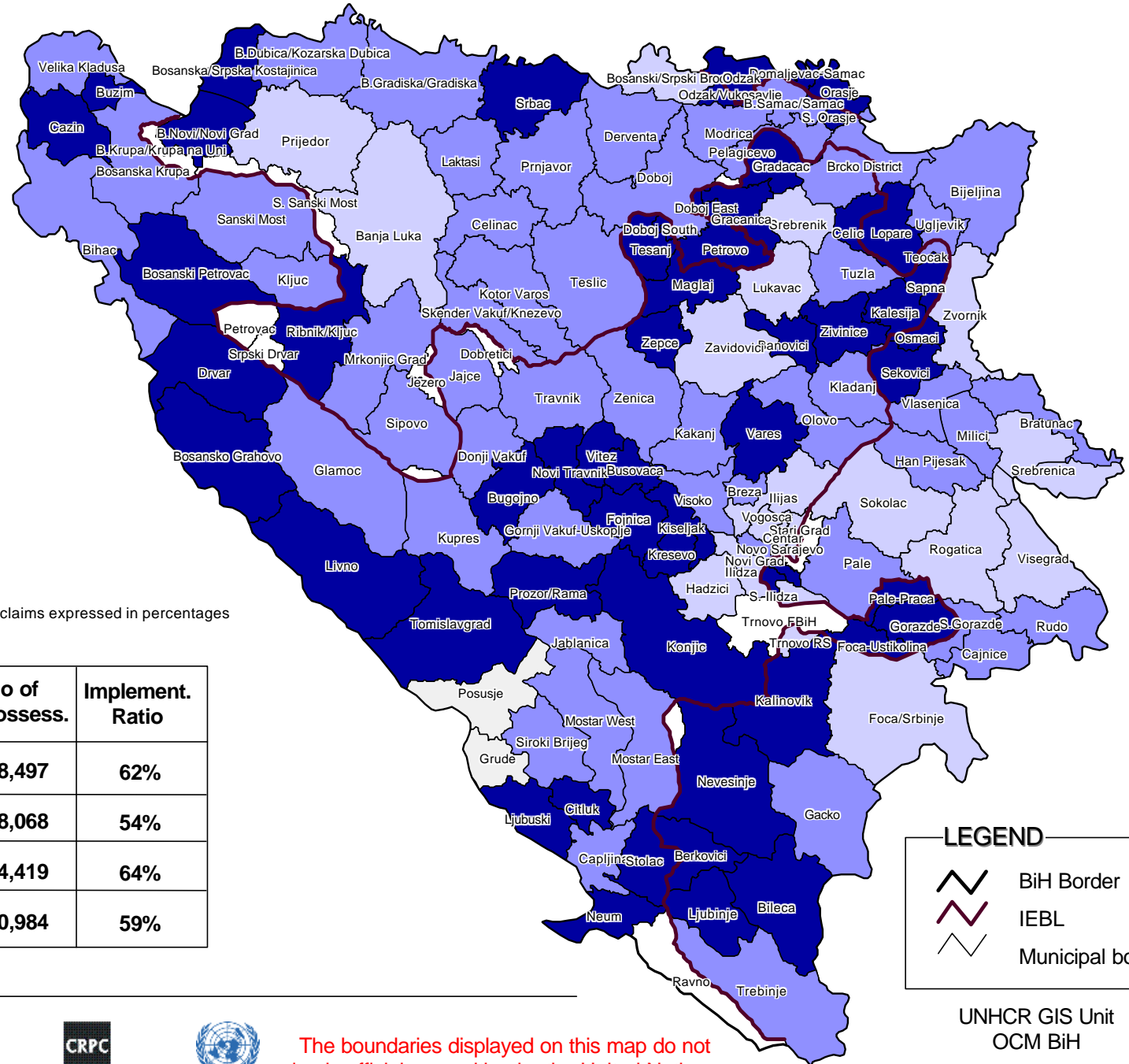
31 August 2002

Bosnia and Herzegovina	Socially Owned Property			Private Property			Total			Implement-ation Ratio*	Previous Implement. Ratio	Implementation Ratio	
	No. of Claims	No. of Decisions	No. of Repossession s	No. of Claims	No. of Decisions	No. of Repossession s	No. of Claims	No. of Decisions	No. of Repossession s			as at end 2001	as at end 2000
Total FEDERATION :	80,450	73,677	51,230	61,362	50,049	37,267	141,812	123,726	88,497	62%	61%	49%	29%
%		92%	64%		82%	61%		87%	62%				
Total REPUBLIKA SRPSKA :	27,661	21,081	17,082	79,917	54,734	40,986	107,578	75,815	58,068	54%	51%	31%	13%
%		76%	62%		68%	51%		70%	54%				
BRCKO DISTRICT :	2,092	1,659	1,577	4,830	3,427	2,842	6,922	5,086	4,419	64%	61%	39%	14%
%		79%	75%		71%	59%		73%	64%				
GRAND TOTAL :	110,203	96,417	69,889	146,109	108,210	81,095	256,312	204,627	150,984	59%	57%	41%	21%
%		87%	63%		74%	56%		80%	59%				

* Implementation Ratio = Total number of repossession s / Total number of claims expressed in percentage form



IMPLEMENTATION OF THE PROPERTY LAWS IN BOSNIA AND HERZEGOVINA



Implementation Ratio *

- more than 75%
- 50% to 75%
- 25% to 50%
- less than 25%
- w/o claims

* Implementation Ratio = Number of repossessions / Number of claims expressed in percentages

	No of Claims	No of Repossess.	Implement. Ratio
Federation of BiH (FBiH)	141,812	88,497	62%
Republika Srpska (RS)	107,578	58,068	54%
Brcko District	6,922	4,419	64%
Total BiH	256,312	150,984	59%

LEGEND

- BiH Border
- IEBL
- Municipal border

The boundaries displayed on this map do not imply official recognition by the United Nations