

A large, stylized graphic of a key, rendered in yellow and grey, positioned centrally behind the title text. The key is oriented vertically, with the head of the key at the top and the shaft pointing downwards. The background behind the key consists of overlapping yellow and blue shapes.

STATISTICS

IMPLEMENTATION OF THE PROPERTY LAWS IN BOSNIA AND HERZEGOVINA

31 July 2002

EXPLANATORY NOTE

- **These statistics reflect the implementation of the property laws in Bosnia and Herzegovina since the passing of the property laws as amended in October 1999.**
- **These statistics are collected every month by staff of OSCE, UNHCR and OHR in the field on the basis of information provided to them by local authorities.**
- **The number of claims is equal to the total number of properties on which a claim was filed with the Municipal authorities.**
- **The number of decisions is the total number of decisions issued by the Municipal authorities.**
- **The number of repossessions is the total number of occupancy right holders or owners that have collected their keys from the municipal authorities.**
- **The implementation ratio is the total number of repossessions divided by the total number of claims expressed in percentage form.**
- **These statistics do not include information on decisions and repossessions on destroyed property, business premises or land.**
- **In some municipalities, the current implementation ratio is lower than the implementation ratio as at the end of 2000. This is due to the exclusion of destroyed property from the number of repossessions, but not from the number of claims.**
- **In some municipalities, the number of claims for socially owned property has increased since last month regardless of the deadline for submission of claims for socially owned property. This is due to the filing of requests for the enforcement of CRPC claims .**

REVIEW OF IMPLEMENTATION OF THE PROPERTY LAWS IN FEDERATION OF BIH

31 July 2002

MUNICIPALITIES / CANTONS	Socially Owned Property			Private Property			Total			Implement-ation Ratio*	Previous Impl. Ratio	Implementatin Ratio		Last Update
	No.of Claims	No.of Decisions	Repossessions	No.of Claims	No.of Decisions	Repossessions	No.of Claims	No.of Decisions	Repossessions			end 2001	end 2000	
Bihac	1,620	1,618	1,107	1,347	1,135	549	2,967	2,753	1,656	55.81%	54.50%	56.26%	38.31%	Jul-02
Bosanska Krupa	488	456	412	1,975	1,457	1,056	2,463	1,913	1,468	59.60%	58.85%	55.67%	29.29%	Jul-02
Bosanski Petrovac	425	420	339	1,159	1,080	849	1,584	1,500	1,188	75.00%	74.24%	76.92%	45.51%	Jul-02
Buzim	7	7	7	1	1	1	8	8	8	100.00%	100.00%	100.00%	25.00%	Aug-01
Cazin	107	107	84	65	62	58	172	169	142	82.56%	81.98%	66.29%	60.47%	Jul-02
Kljuc	827	812	565	835	735	574	1,662	1,547	1,139	68.53%	66.65%	47.09%	24.46%	Jul-02
Sanski Most	998	952	729	2,949	1,687	1,422	3,947	2,639	2,151	54.50%	51.72%	41.51%	24.90%	Jul-02
Velika Kladusa	456	439	295	54	41	41	510	480	336	65.88%	64.89%	70.92%	70.92%	Jul-02
Total UNA-SANA:	4,928	4,811	3,538	8,385	6,198	4,550	13,313	11,009	8,088	60.75%	59.13%	53.12%	32.80%	
Domaljevac - Samac	9	9	9	4	4	3	13	13	12	92.31%	92.31%	83.33%	33.33%	Jul-02
Odzak	234	232	215	192	162	131	426	394	346	81.22%	80.57%	77.69%	28.04%	Jul-02
Orasje	159	159	148	152	152	143	311	311	291	93.57%	92.93%	64.62%	43.75%	Jul-02
Total POSAVINA:	402	400	372	348	318	277	750	718	649	86.53%	85.92%	72.01%	34.06%	
Banovici	1,025	1,025	816	72	72	48	1,097	1,097	864	78.76%	76.75%	63.43%	31.69%	Jul-02
Celic	40	40	30	185	185	180	225	225	210	93.33%	93.33%	77.00%	69.15%	Jul-02
Doboj - East	0	0	0	10	10	10	10	10	10	100.00%	100.00%	100.00%	55.56%	Oct-01
Gracanica	246	232	216	454	454	406	700	686	622	88.86%	87.91%	68.16%	43.62%	Jul-02
Gradacac	251	251	231	381	376	278	632	627	509	80.54%	76.83%	69.33%	53.14%	Jul-02
Kalesija	111	111	104	984	984	848	1,095	1,095	952	86.94%	86.39%	83.86%	32.57%	Jul-02
Kladanj	177	171	132	174	131	75	351	302	207	58.97%	54.44%	44.65%	16.31%	Jul-02
Lukavac	796	794	774	2,240	919	221	3,036	1,713	995	32.77%	31.85%	37.17%	31.65%	Jul-02
Sapna	23	23	15	117	117	89	140	140	104	74.29%	70.00%	43.07%	40.16%	Jul-02
Srebrenik	78	78	53	1,002	791	355	1,080	869	408	37.78%	33.96%	17.78%	21.46%	Jul-02
Teocak	7	6	5	8	7	6	15	13	11	73.33%	73.33%	29.63%	6.67%	Jul-02
Tuzla	4,770	3,724	3,254	2,145	1,625	1,412	6,915	5,349	4,666	67.48%	62.03%	48.10%	23.20%	Jul-02
Zivinice	414	414	364	461	432	386	875	846	750	85.71%	80.89%	62.78%	42.39%	Jul-02
Total TUZLA:	7,938	6,869	5,994	8,233	6,103	4,314	16,171	12,972	10,308	63.74%	60.28%	50.48%	29.30%	
Breza	181	181	180	396	362	207	577	543	387	67.07%	66.43%	53.97%	55.44%	Jul-02
Doboj - South	0	0	0	15	15	14	15	15	14	93.33%	93.33%	93.33%	73.33%	Oct-01
Kakanj	1,126	934	714	1,145	1,027	660	2,271	1,961	1,374	60.50%	57.05%	48.52%	37.28%	Jul-02
Maglaj	619	619	619	1,897	1,666	1,474	2,516	2,285	2,093	83.19%	80.89%	75.42%	27.77%	Jul-02
Olovo	227	227	151	225	171	95	452	398	246	54.42%	50.22%	45.60%	16.33%	Jul-02
Tesanj	157	157	126	470	454	356	627	611	482	76.87%	75.76%	70.68%	46.20%	Jul-02
Usora	3	3	3	10	10	10	13	13	13	100.00%	92.31%	76.92%	87.50%	Jul-02
Vares	966	966	852	33	33	28	999	999	880	88.09%	87.16%	76.35%	52.96%	Jul-02
Visoko	338	334	240	1,167	1,028	540	1,505	1,362	780	51.83%	48.25%	29.58%	30.81%	Jul-02
Zavidovici	1,226	1,162	928	2,850	1,267	869	4,076	2,429	1,797	44.09%	43.04%	30.82%	22.30%	Jul-02
Zenica	5,775	4,673	3,608	1,825	1,432	636	7,600	6,105	4,244	55.84%	53.92%	44.40%	21.45%	Jul-02
Zepce	324	324	323	1,297	1,274	1,246	1,621	1,598	1,569	96.79%	96.77%	84.05%	84.05%	Jul-02
Total ZENICA-DOBOJ:	10,942	9,580	7,744	11,330	8,739	6,135	22,272	18,319	13,879	62.32%	60.46%	50.84%	32.19%	
Foca - Ustikolina	50	50	48	92	92	71	142	142	119	83.80%	79.58%	16.52%	5.91%	Jul-02
Gorazde	1,246	1,246	898	282	282	210	1,528	1,528	1,108	72.51%	68.66%	51.06%	19.98%	Jul-02
Pale - Praca	2	2	2	5	5	5	7	7	7	100.00%	100.00%	100.00%	22.73%	Jun-01
Total BOSNIA-PODRINJE:	1,298	1,298	948	379	379	286	1,677	1,677	1,234	73.58%	69.71%	43.10%	17.69%	
Bugojno	1,060	922	887	2,649	2,498	2,194	3,709	3,420	3,081	83.07%	82.51%	82.09%	56.34%	Jul-02
Busovaca	102	102	102	690	682	658	792	784	760	95.96%	96.08%	98.68%	70.27%	Jul-02
Donji Vakuf	339	338	234	807	678	290	1,146	1,016	524	45.72%	43.62%	32.18%	26.24%	Jul-02

Source: Local Authorities / PLIP (Property Legislation Implementation Plan) Focal Points

REVIEW OF IMPLEMENTATION OF THE PROPERTY LAWS IN FEDERATION OF BiH

31 July 2002

MUNICIPALITIES / CANTONS	Socially Owned Property			Private Property			Total			Implement-ation Ratio*	Previous Impl. Ratio	Implementatin Ratio		Last Update
	No.of Claims	No.of Decisions	Repossessions	No.of Claims	No.of Decisions	Repossessions	No.of Claims	No.of Decisions	Repossessions			end 2001	end 2000	
Fojnica	236	236	220	455	421	421	691	657	641	92.76%	92.47%	87.37%	81.59%	Jul-02
Gornji Vakuf - Uskoplje	183	159	142	177	163	118	360	322	260	72.22%	71.51%	56.79%	36.58%	Jul-02
Jajce	1,595	1,336	1,029	1,638	934	850	3,233	2,270	1,879	58.12%	53.82%	47.05%	26.93%	Jul-02
Kiseljak	112	111	73	1,950	1,973	1,913	2,062	2,084	1,986	96.31%	95.67%	93.46%	81.57%	Jul-02
Kresevo	18	18	18	130	130	129	148	148	147	99.32%	97.30%	95.95%	88.81%	Jul-02
Novi Travnik	2,108	2,080	1,745	319	319	289	2,427	2,399	2,034	83.81%	82.56%	71.75%	40.91%	Jul-02
Travnik	1,467	1,450	1,028	1,682	1,261	1,112	3,149	2,711	2,140	67.96%	67.79%	69.89%	63.37%	Jul-02
Vitez	592	552	521	741	741	731	1,333	1,293	1,252	93.92%	93.22%	91.91%	67.34%	Jul-02
Total CENTRAL BOSNIA:	7,812	7,304	5,999	11,238	9,800	8,705	19,050	17,104	14,704	77.19%	75.89%	73.26%	55.81%	
Capljina	740	518	445	1,036	675	645	1,776	1,193	1,090	61.37%	56.56%	44.72%	7.25%	Jul-02
Citluk	5	5	5	3	3	3	8	8	8	100.00%	100.00%	100.00%	100.00%	Sep-00
Jablanica	171	168	116	131	111	65	302	279	181	59.93%	48.11%	59.35%	40.61%	Jul-02
Konjic	849	849	811	1,696	1,239	1,239	2,545	2,088	2,050	80.55%	79.84%	68.52%	41.92%	Jul-02
Mostar - North	76	59	22	892	454	437	968	513	459	47.42%	47.54%	28.86%	4.05%	Jul-02
Mostar - South	0	0	0	136	105	80	136	105	80	58.82%	58.59%	21.76%	48.37%	Jul-02
Mostar - West	2,460	1,630	1,481	169	25	47	2,629	1,655	1,528	58.12%	54.55%	36.96%	11.29%	Jul-02
Mostar Central Zone	521	476	128	109	81	39	630	557	167	26.51%	26.51%	21.63%	12.09%	Jul-02
Mostar Old Town	1,435	1,170	869	1,068	982	440	2,503	2,152	1,309	52.30%	49.18%	33.26%	35.38%	Jul-02
Mostar South-East	3	1	0	650	557	331	653	558	331	50.69%	48.69%	61.23%	8.65%	Jul-02
Mostar South-West	3,801	2,740	2,080	305	139	106	4,106	2,879	2,186	53.24%	49.90%	32.56%	10.14%	Jul-02
Neum	28	28	21	172	161	153	200	189	174	87.00%	87.31%	82.45%	59.88%	Jul-02
Prozor / Rama	210	210	207	172	172	156	382	382	363	95.03%	94.75%	88.92%	76.53%	Jul-02
Stolac	393	386	317	461	433	410	854	819	727	85.13%	70.38%	50.85%	1.64%	Jul-02
Total HERZEGOVINA-NERETVA:	10,692	8,240	6,502	7,000	5,137	4,151	17,692	13,377	10,653	60.21%	56.60%	41.11%	16.84%	
Grude	5	5	0	0	0	0	5	5	0	0.00%	0.00%	0.00%	0.00%	Jul-02
Ljubuski	62	62	50	213	208	189	275	270	239	86.91%	85.66%	65.55%	43.25%	Jul-02
Posusje	5	3	1	0	0	0	5	3	1	20.00%	40.00%	40.00%	16.67%	Jul-02
Siroki Brijeg	0	0	0	2	2	0	2	2	0	0.00%	0.00%	0.00%	0.00%	Jul-02
Total WEST HERZEGOVINA:	72	70	51	215	210	189	287	280	240	83.62%	82.46%	65.25%	42.91%	
Centar / Stari Grad	6,024	4,111	2,820	1,124	1,037	499	7,148	5,148	3,319	46.43%	44.56%	33.24%	13.22%	Jul-02
Ilidza / Hadzici	4,365	4,365	1,972	3,680	2,325	1,449	8,045	6,690	3,421	42.52%	40.42%	35.77%	22.14%	Jul-02
Novi Grad	10,448	10,448	6,124	2,052	1,834	1,474	12,500	12,282	7,598	60.78%	58.30%	49.54%	24.42%	Jul-02
Novo Sarajevo	9,694	9,694	4,725	1,250	1,244	1,051	10,944	10,938	5,776	52.78%	50.78%	42.75%	22.26%	Jul-02
Vogosca / Ilijas	3,441	3,441	1,246	3,057	2,689	1,118	6,498	6,130	2,364	36.38%	34.10%	33.74%	23.05%	Jul-02
Total SARAJEVO:	33,972	32,059	16,887	11,163	9,129	5,591	45,135	41,188	22,478	49.80%	47.63%	40.92%	21.44%	
Bosansko Grahovo	41	38	31	156	25	24	197	63	55	27.92%	27.92%	27.92%	42.19%	Sep-01
Drvar	941	941	780	1,813	1,774	1,372	2,754	2,715	2,152	78.14%	73.69%	37.39%	5.53%	Jul-02
Glamoc	428	314	244	541	329	226	969	643	470	48.50%	42.38%	29.05%	4.59%	Jul-02
Kupres	275	231	185	234	217	177	509	448	362	71.12%	70.26%	59.77%	10.40%	Jul-02
Livno	330	300	268	240	221	206	570	521	474	83.16%	82.32%	76.67%	53.75%	Jul-02
Tomislavgrad	59	49	41	95	89	80	154	138	121	78.57%	81.25%	71.34%	46.67%	Jul-02
Total CANTON 10:	2,074	1,873	1,549	3,079	2,655	2,085	5,153	4,528	3,634	70.52%	66.85%	42.83%	12.90%	
Total FEDERATION :	80,130	72,504	49,584	61,370	48,668	36,283	141,500	121,172	85,867	60.68%	58.34%	49.40%	28.75%	
%		90%	62%		79%	59%		86%	61%					

* Implementation Ratio = Total number of repossessions / Total number of claims expressed in percentage form

Source: Local Authorities / PLIP (Property Legislation Implementation Plan) Focal Points

REVIEW OF IMPLEMENTATION OF THE PROPERTY LAWS IN REPUBLIKA SRPSKA

31 July 2002

MUNICIPALITIES	Socially Owned Property			Private Property			Total			Implement-ation Ratio*	Previous Impl. Ratio	Implementation Ratio		Last Update
	No.of Claims	No.of Decisions	Repossessions	No.of Claims	No.of Decisions	Repossessions	No.of Claims	No.of Decisions	Repossessions			end 2001	end 2000	
Banja Luka	9,222	4,991	3,706	7,834	3,447	2,884	17,056	8,438	6,590	38.64%	35.54%	24.86%	8.56%	Jul-02
B.Dubica / Kozarska Dubica	209	197	127	1,142	993	706	1,351	1,190	833	61.66%	59.96%	49.96%	17.95%	Jul-02
B.Gradiska / Gradiska	407	399	298	4,571	3,482	2,517	4,978	3,881	2,815	56.55%	53.23%	42.17%	22.85%	Jul-02
B.Novi / Novi Grad	514	484	374	1,247	1,167	936	1,761	1,651	1,310	74.39%	73.24%	65.13%	16.84%	Jul-02
B.Samac / Samac	404	368	346	1,293	1,011	845	1,697	1,379	1,191	70.18%	66.17%	47.33%	18.77%	Jul-02
Berkovici	1	1	1	5	5	5	6	6	6	100.00%	83.33%	80.00%	0.00%	Jul-02
Bijeljina	652	498	336	8,380	4,419	4,365	9,032	4,917	4,701	52.05%	49.94%	36.96%	15.68%	Jul-02
Bileca	134	134	110	288	274	194	422	408	304	72.04%	67.28%	61.03%	23.44%	Jul-02
Bosanska / Srpska Kostajnica	27	27	11	341	337	279	368	364	290	78.80%	77.75%	69.01%	47.60%	Jul-02
Bosanski / Srpski Brod	1,099	969	598	1,554	575	443	2,653	1,544	1,041	39.24%	27.00%	21.48%	12.93%	Jul-02
Bratunac	166	148	117	1,607	1,300	735	1,773	1,448	852	48.05%	43.60%	15.77%	3.54%	Jul-02
Cajnice	94	94	61	230	221	103	324	315	164	50.62%	46.75%	39.20%	4.45%	Jul-02
Celinac	59	56	42	259	257	179	318	313	221	69.50%	67.09%	51.48%	34.60%	Jul-02
Derвента	1,139	776	761	4,722	3,340	3,152	5,861	4,116	3,913	66.76%	65.26%	24.27%	9.32%	Jul-02
Doboj	2,832	2,004	1,955	6,351	3,353	2,431	9,183	5,357	4,386	47.76%	45.90%	37.91%	15.60%	Jul-02
Foca / Srbinje	1,045	1,045	723	1,611	1,253	434	2,656	2,298	1,157	43.56%	39.39%	24.20%	2.04%	Jul-02
Gacko	275	243	210	349	290	182	624	533	392	62.82%	59.25%	39.68%	14.23%	Jul-02
Han Pijesak	59	58	42	2	1	0	61	59	42	68.85%	67.21%	56.25%	10.19%	Jul-02
Kalinovik	64	64	49	29	29	20	93	93	69	74.19%	74.19%	64.13%	39.19%	Jul-02
Kotor Varos	294	292	208	1,290	1,249	833	1,584	1,541	1,041	65.72%	64.77%	47.96%	63.65%	Jul-02
Laktasi	31	31	25	594	580	381	625	611	406	64.96%	62.93%	55.45%	37.14%	Jul-02
Ljubinja	12	12	12	43	43	28	55	55	40	72.73%	62.96%	22.37%	14.52%	Jul-02
Lopare	95	95	90	736	735	701	831	830	791	95.19%	94.56%	75.53%	33.07%	Jul-02
Milici	62	61	36	180	178	82	242	239	118	48.76%	45.42%	7.86%	7.86%	Jul-02
Modrica	524	524	468	2,379	2,379	1,550	2,903	2,903	2,018	69.51%	65.90%	39.01%	10.13%	Jul-02
Mrkonjic Grad	186	176	170	744	788	522	930	964	692	74.41%	74.75%	61.27%	18.69%	Jul-02
Nevesinje	51	33	31	558	488	434	609	521	465	76.35%	88.03%	33.92%	24.81%	Jul-02
Odzak / Vukosavlje	0	0	0	490	490	451	490	490	451	92.04%	86.50%	77.92%	19.90%	Jul-02
Osmaci	3	3	3	275	275	244	278	278	247	88.85%	81.49%	30.29%	8.58%	Jul-02
Pale	211	211	158	578	578	369	789	789	527	66.79%	64.37%	53.34%	19.44%	Jul-02
Pelagicevo	7	7	5	155	155	76	162	162	81	50.00%	43.83%	22.36%	16.39%	Jul-02
Petrovo	35	35	25	73	73	65	108	108	90	83.33%	81.48%	66.29%	51.47%	Jul-02
Prijedor	2,034	1,573	1,230	8,557	6,162	3,303	10,591	7,735	4,533	42.80%	40.81%	24.52%	8.94%	Jul-02
Prnjavor	155	151	102	2,100	1,499	1,107	2,255	1,650	1,209	53.61%	49.35%	33.48%	15.60%	Jul-02
Ribnik / Kljuc	25	22	21	8	6	4	33	28	25	75.76%	75.76%	80.65%	73.08%	Apr-02
Rogatica	392	389	300	1,667	720	528	2,059	1,109	828	40.21%	37.00%	24.32%	6.61%	Jul-02
Rudo	170	170	148	345	340	204	515	510	352	68.35%	39.21%	32.07%	3.49%	Jul-02
Sekovici	51	51	41	97	97	72	148	148	113	76.35%	76.35%	70.63%	38.41%	Jul-02
Sipovo	114	106	59	496	448	243	610	554	302	49.51%	28.90%	37.79%	28.66%	Jul-02
Skender Vakuf / Knezevo	78	78	45	269	265	195	347	343	240	69.16%	65.71%	49.57%	23.17%	Jul-02
Sokolac	81	80	46	516	497	226	597	577	272	45.56%	40.70%	26.57%	11.27%	Jul-02
Srbac	60	60	59	161	158	143	221	218	202	91.40%	88.99%	78.87%	53.88%	Jul-02
Srebrenica	531	508	369	1,798	1,105	388	2,329	1,613	757	32.50%	30.04%	8.29%	2.18%	Jul-02
Srpska Ilidza / S.Novo Sarajevo	264	282	174	870	769	623	1,134	1,051	797	70.28%	62.12%	23.78%	9.31%	Jul-02
Srpsko Gorazde	12	12	9	379	392	184	391	404	193	49.36%	43.99%	21.20%	3.61%	Jul-02
Srpsko Orasje	1	1	1	16	16	16	17	17	17	100.00%	100.00%	100.00%	100.00%	Jun-02

REVIEW OF IMPLEMENTATION OF THE PROPERTY LAWS IN REPUBLIKA SRPSKA

31 July 2002

MUNICIPALITIES	Socially Owned Property			Private Property			Total			Implement- ation Ratio*	Previous Impl. Ratio	Implementation Ratio		Last Update
	No.of Claims	No.of Decisions	Repossessions	No.of Claims	No.of Decisions	Repossessions	No.of Claims	No.of Decisions	Repossessions			end 2001	end 2000	
Teslic	767	630	575	1,909	1,471	1,335	2,676	2,101	1,910	71.38%	69.25%	34.10%	12.08%	Jul-02
Trebinje	751	751	581	1,110	643	553	1,861	1,394	1,134	60.93%	56.23%	42.18%	12.81%	Jul-02
Trnovo RS	89	85	58	321	317	108	410	402	166	40.49%	77.75%	44.16%	41.23%	Jul-02
Ugljevik	134	132	115	575	575	359	709	707	474	66.85%	63.58%	38.55%	9.20%	Jul-02
Visegrad	495	496	353	2,123	778	593	2,618	1,274	946	36.13%	34.65%	22.20%	3.67%	Jul-02
Vlasenica	347	325	280	1,470	1,097	656	1,817	1,422	936	51.51%	48.44%	21.88%	16.58%	Jul-02
Zvornik	1,176	843	647	5,139	1,878	1,566	6,315	2,721	2,213	35.04%	31.91%	16.18%	3.15%	Jul-02
Total RS :	27,640	20,781	16,311	79,836	52,998	38,552	107,476	73,779	54,863	51.05%	47.96%	30.64%	13.21%	
%		75%	59%		66%	48%		69%	51%					

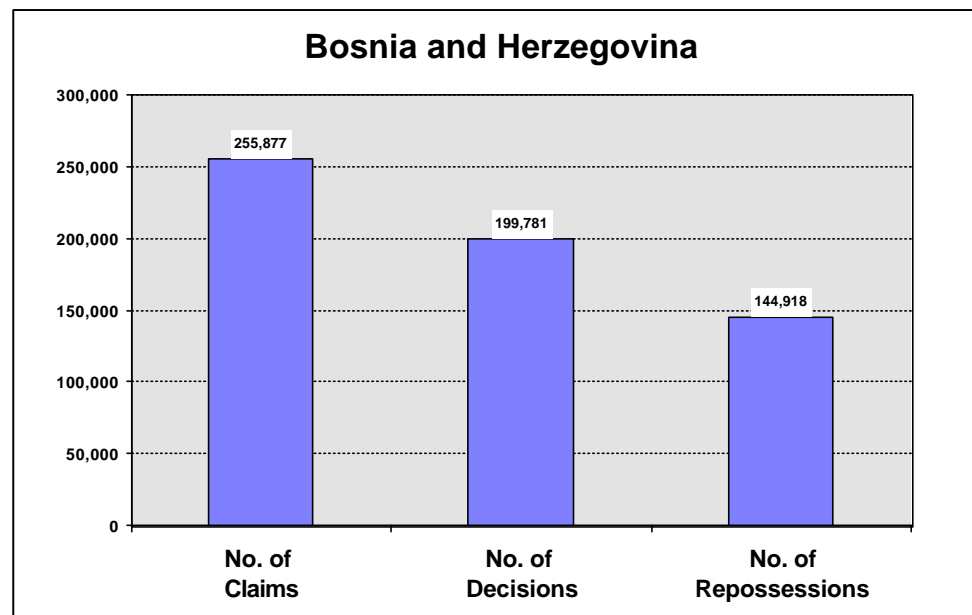
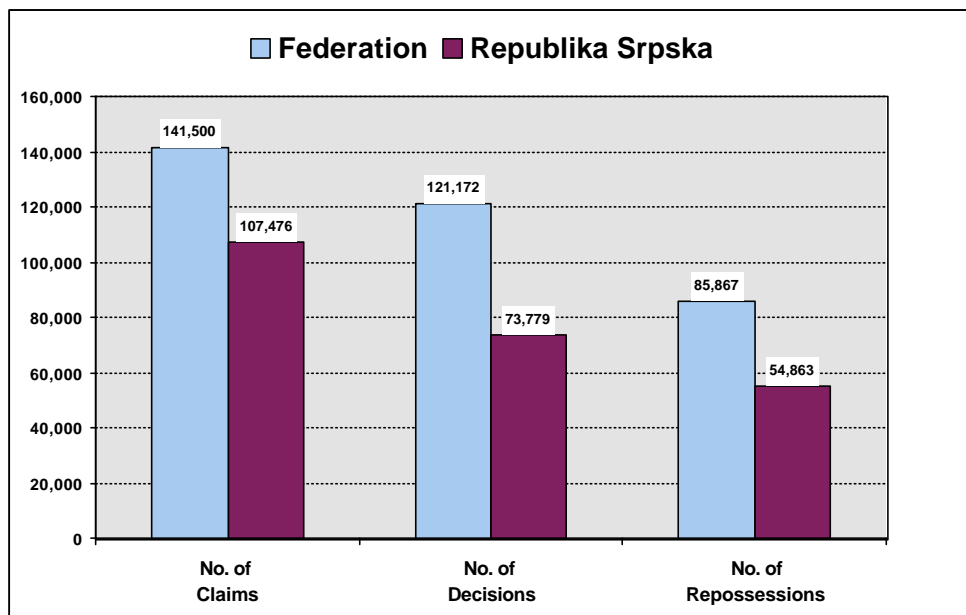
* Implementation Ratio = Total number of repossessions / Total number of claims expressed in percentage form

IMPLEMENTATION OF THE PROPERTY LAWS IN BOSNIA AND HERZEGOVINA - SUMMARY

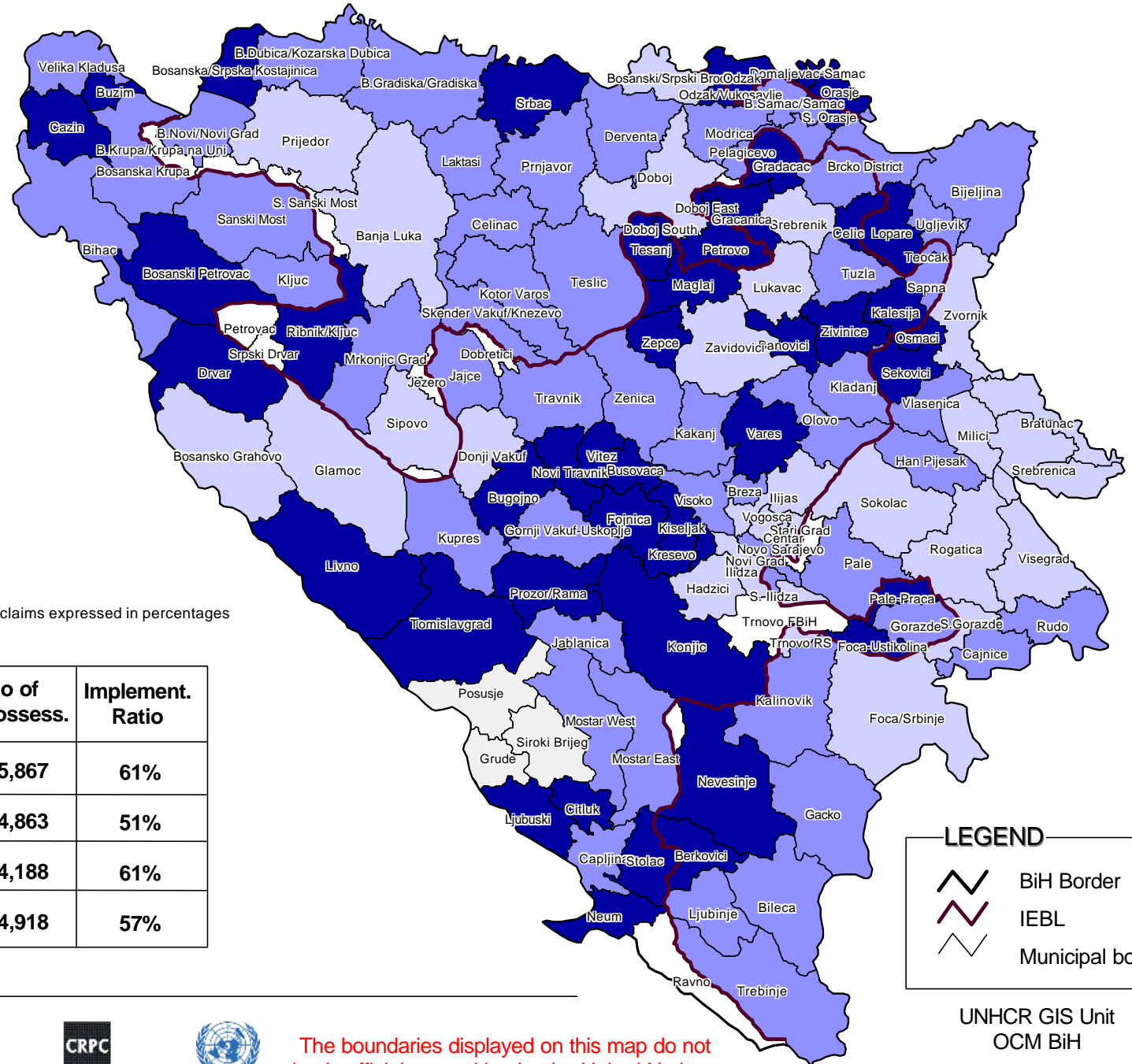
31 July 2002

Bosnia and Herzegovina	Socially Owned Property			Private Property			Total			Implement- ation Ratio*	Previous Implement. Ratio	Implementation Ratio	
	No. of Claims	No. of Decisions	No. of Reposses- sions	No. of Claims	No. of Decisions	No. of Reposses- sions	No. of Claims	No. of Decisions	No. of Reposses- sions			as at end 2001	as at end 2000
Total FEDERATION :	80,130	72,504	49,584	61,370	48,668	36,283	141,500	121,172	85,867	61%	58%	49%	29%
%		90%	62%		79%	59%		86%	61%				
Total REPUBLIKA SRPSKA :	27,640	20,781	16,311	79,836	52,998	38,552	107,476	73,779	54,863	51%	48%	31%	13%
%		75%	59%		66%	48%		69%	51%				
BRCKO DISTRICT :	2,092	1,628	1,534	4,809	3,202	2,654	6,901	4,830	4,188	61%	59%	39%	14%
%		78%	73%		67%	55%		70%	61%				
GRAND TOTAL :	109,862	94,913	67,429	146,015	104,868	77,489	255,877	199,781	144,918	57%	54%	41%	21%
%		86%	61%		72%	53%		78%	57%				

* Implementation Ratio = Total number of repossessions / Total number of claims expressed in percentage form



IMPLEMENTATION OF THE PROPERTY LAWS IN BOSNIA AND HERZEGOVINA



Implementation Ratio *

- more than 75%
- 50% to 75%
- 25% to 50%
- less than 25%
- w/o claims

* Implementation Ratio = Number of repossessions / Number of claims expressed in percentages

	No of Claims	No of Repossess.	Implement. Ratio
Federation of BiH (FBiH)	141,500	85,867	61%
Republika Srpska (RS)	107,476	54,863	51%
Brcko District	6,901	4,188	61%
Total BiH	255,877	144,918	57%

LEGEND

- BiH Border
- IEBL
- Municipal border



The boundaries displayed on this map do not imply official recognition by the United Nations

UNHCR GIS Unit
OCM BiH
Date: 31 July 2002