

A large, stylized graphic of a key, colored in shades of yellow and grey, positioned centrally behind the title text.

STATISTICS

IMPLEMENTATION OF THE PROPERTY LAWS IN BOSNIA AND HERZEGOVINA

30 June 2002

EXPLANATORY NOTE

- **These statistics reflect the implementation of the property laws in Bosnia and Herzegovina since the passing of the property laws as amended in October 1999.**
- **These statistics are collected every month by staff of OSCE, UNHCR and OHR in the field on the basis of information provided to them by local authorities.**
- **The number of claims is equal to the total number of properties on which a claim was filed with the Municipal authorities.**
- **The number of decisions is the total number of decisions issued by the Municipal authorities.**
- **The number of repossessions is the total number of occupancy right holders or owners that have collected their keys from the municipal authorities.**
- **The implementation ratio is the total number of repossessions divided by the total number of claims expressed in percentage form.**
- **These statistics do not include information on decisions and repossessions on destroyed property, business premises or land.**
- **In some municipalities, the current implementation ratio is lower than the implementation ratio as at the end of 2000. This is due to the exclusion of destroyed property from the number of repossessions, but not from the number of claims.**
- **In some municipalities, the number of claims for socially owned property has increased since last month regardless of the deadline for submission of claims for socially owned property. This is due to the filing of requests for the enforcement of CRPC claims .**

REVIEW OF IMPLEMENTATION OF THE PROPERTY LAWS IN FEDERATION OF BiH

30 June 2002

MUNICIPALITIES / CANTONS	Socially Owned Property			Private Property			Total			Implement-ation Ratio*	Previous Impl. Ratio	Implementatin Ratio		Last Update
	No.of Claims	No.of Decisions	Repossessions	No.of Claims	No.of Decisions	Repossessions	No.of Claims	No.of Decisions	Repossessions			end 2001	end 2000	
Bihac	1,620	1,618	1,075	1,336	1,114	536	2,956	2,732	1,611	54.50%	53.65%	56.26%	38.31%	Jun-02
Bosanska Krupa	486	454	406	1,920	1,423	1,010	2,406	1,877	1,416	58.85%	57.61%	55.67%	29.29%	Jun-02
Bosanski Petrovac	425	420	333	1,155	1,065	840	1,580	1,485	1,173	74.24%	73.56%	76.92%	45.51%	Jun-02
Buzim	7	7	7	1	1	1	8	8	8	100.00%	100.00%	100.00%	25.00%	Aug-01
Cazin	107	107	83	65	62	58	172	169	141	81.98%	69.23%	66.29%	60.47%	Jun-02
Kljuc	827	812	553	825	709	548	1,652	1,521	1,101	66.65%	64.01%	47.09%	24.46%	Jun-02
Sanski Most	995	944	706	2,932	1,620	1,325	3,927	2,564	2,031	51.72%	49.96%	41.51%	24.90%	Jun-02
Velika Kladusa	454	427	291	53	41	38	507	468	329	64.89%	67.01%	70.92%	70.92%	Jun-02
Total UNA-SANA:	4,921	4,789	3,454	8,287	6,035	4,356	13,208	10,824	7,810	59.13%	57.68%	53.12%	32.80%	
Domaljevac - Samac	9	9	9	4	4	3	13	13	12	92.31%	92.31%	83.33%	33.33%	Jun-02
Odzak	234	232	211	188	162	129	422	394	340	80.57%	78.69%	77.69%	28.04%	Jun-02
Orasje	159	159	148	152	152	141	311	311	289	92.93%	89.39%	64.62%	43.75%	Jun-02
Total POSAVINA:	402	400	368	344	318	273	746	718	641	85.92%	83.36%	72.01%	34.06%	
Banovici	1,025	1,025	795	72	72	47	1,097	1,097	842	76.75%	74.84%	63.43%	31.69%	Jun-02
Celic	40	40	30	185	185	180	225	225	210	93.33%	93.30%	77.00%	69.15%	Jun-02
Doboj - East	0	0	0	10	10	10	10	10	10	100.00%	100.00%	100.00%	55.56%	Oct-01
Gracanica	246	232	214	449	449	397	695	681	611	87.91%	86.85%	68.16%	43.62%	Jun-02
Gradacac	251	251	231	379	375	253	630	626	484	76.83%	75.16%	69.33%	53.14%	Jun-02
Kalesija	111	111	104	984	984	842	1,095	1,095	946	86.39%	86.45%	83.86%	32.57%	Jun-02
Kladanj	177	171	132	172	113	58	349	284	190	54.44%	51.18%	44.65%	16.31%	Jun-02
Lukavac	796	794	768	2,234	907	197	3,030	1,701	965	31.85%	39.05%	37.17%	31.65%	Jun-02
Sapna	23	23	15	117	117	83	140	140	98	70.00%	67.14%	43.07%	40.16%	Jun-02
Srebrenik	78	78	52	991	788	311	1,069	866	363	33.96%	30.69%	17.78%	21.46%	Jun-02
Teocak	7	6	5	8	7	6	15	13	11	73.33%	73.33%	29.63%	6.67%	Jun-02
Tuzla	4,770	3,658	3,179	2,457	1,875	1,304	7,227	5,533	4,483	62.03%	59.76%	48.10%	23.20%	Jun-02
Zivinice	414	410	345	460	416	362	874	826	707	80.89%	78.87%	62.78%	42.39%	Jun-02
Total TUZLA:	7,938	6,799	5,870	8,518	6,298	4,050	16,456	13,097	9,920	60.28%	61.06%	50.48%	29.30%	
Breza	181	181	180	394	348	202	575	529	382	66.43%	64.50%	53.97%	55.44%	Jun-02
Doboj - South	0	0	0	15	15	14	15	15	14	93.33%	93.33%	93.33%	73.33%	Oct-01
Kakanj	1,120	930	701	1,127	926	581	2,247	1,856	1,282	57.05%	53.64%	48.52%	37.28%	Jun-02
Maglaj	619	619	617	1,888	1,600	1,411	2,507	2,219	2,028	80.89%	78.56%	75.42%	27.77%	Jun-02
Olovo	227	227	142	221	156	83	448	383	225	50.22%	46.50%	45.60%	16.33%	Jun-02
Tesanj	157	157	126	470	454	349	627	611	475	75.76%	75.76%	70.68%	46.20%	Jun-02
Usora	3	3	3	10	9	9	13	12	12	92.31%	92.31%	76.92%	87.50%	Feb-02
Vares	964	964	841	33	33	28	997	997	869	87.16%	85.92%	76.35%	52.96%	Jun-02
Visoko	338	334	237	1,150	1,024	481	1,488	1,358	718	48.25%	45.55%	29.58%	30.81%	Jun-02
Zavidovici	1,218	1,113	901	2,825	1,126	839	4,043	2,239	1,740	43.04%	42.44%	30.82%	22.30%	Jun-02
Zenica	5,775	4,579	3,476	1,792	1,344	604	7,567	5,923	4,080	53.92%	51.79%	44.40%	21.45%	Jun-02
Zepce	324	323	322	1,288	1,268	1,238	1,612	1,591	1,560	96.77%	95.98%	84.05%	84.05%	Jun-02
Total ZENICA-DOBOJ:	10,926	9,430	7,546	11,213	8,303	5,839	22,139	17,733	13,385	60.46%	58.62%	50.84%	32.19%	
Foca - Ustikolina	50	50	47	92	92	66	142	142	113	79.58%	76.06%	16.52%	5.91%	Jun-02
Gorazde	1,246	1,246	845	279	279	202	1,525	1,525	1,047	68.66%	66.36%	51.06%	19.98%	Jun-02
Pale - Praca	2	2	2	5	5	5	7	7	7	100.00%	100.00%	100.00%	22.73%	Jun-01
Total BOSNIA-PODRINJE:	1,298	1,298	894	376	376	273	1,674	1,674	1,167	69.71%	67.32%	43.10%	17.69%	
Bugojno	1,060	917	869	2,644	2,479	2,187	3,704	3,396	3,056	82.51%	81.12%	82.09%	56.34%	Jun-02
Busovaca	102	102	102	688	680	657	790	782	759	96.08%	96.19%	98.68%	70.27%	Jun-02
Donji Vakuf	339	338	234	798	624	262	1,137	962	496	43.62%	41.34%	32.18%	26.24%	Jun-02

Source: Local Authorities / PLIP (Property Legislation Implementation Plan) Focal Points

REVIEW OF IMPLEMENTATION OF THE PROPERTY LAWS IN FEDERATION OF BiH

30 June 2002

MUNICIPALITIES / CANTONS	Socially Owned Property			Private Property			Total			Implement-ation Ratio*	Previous Impl. Ratio	Implementatin Ratio		Last Update
	No.of Claims	No.of Decisions	Repossessions	No.of Claims	No.of Decisions	Repossessions	No.of Claims	No.of Decisions	Repossessions			end 2001	end 2000	
Fojnica	236	236	220	455	420	419	691	656	639	92.47%	92.32%	87.37%	81.59%	Jun-02
Gornji Vakuf - Uskoplje	183	159	142	175	162	114	358	321	256	71.51%	72.25%	56.79%	36.58%	Jun-02
Jajce	1,595	1,238	977	1,638	856	763	3,233	2,094	1,740	53.82%	49.21%	47.05%	26.93%	Jun-02
Kiseljak	112	110	72	1,945	1,945	1,896	2,057	2,055	1,968	95.67%	95.27%	93.46%	81.57%	Jun-02
Kresevo	18	18	18	130	130	126	148	148	144	97.30%	97.30%	95.95%	88.81%	Jun-02
Novi Travnik	2,108	2,080	1,713	317	317	289	2,425	2,397	2,002	82.56%	81.36%	71.75%	40.91%	Jun-02
Travnik	1,467	1,450	1,018	1,656	1,243	1,099	3,123	2,693	2,117	67.40%	67.40%	69.89%	63.37%	Jun-02
Vitez	592	549	520	736	731	718	1,328	1,280	1,238	93.22%	92.67%	91.91%	67.34%	Jun-02
Total CENTRAL BOSNIA:	7,812	7,197	5,885	11,182	9,587	8,530	18,994	16,784	14,415	75.89%	74.42%	73.26%	55.81%	
Capljina	740	490	412	1,058	652	605	1,798	1,142	1,017	56.56%	53.72%	44.72%	7.25%	Jun-02
Citluk	5	5	5	3	3	3	8	8	8	100.00%	100.00%	100.00%	100.00%	Sep-00
Jablanica	171	168	108	305	170	121	476	338	229	48.11%	41.65%	59.35%	40.61%	Jun-02
Konjic	849	836	802	1,696	1,230	1,230	2,545	2,066	2,032	79.84%	76.81%	68.52%	41.92%	Jun-02
Mostar - North	76	59	22	1,569	927	760	1,645	986	782	47.54%	44.34%	28.86%	4.05%	Jun-02
Mostar - South	0	0	0	128	113	75	128	113	75	58.59%	56.00%	21.76%	48.37%	Jun-02
Mostar - West	2,460	1,571	1,387	169	25	47	2,629	1,596	1,434	54.55%	51.50%	36.96%	11.29%	Jun-02
Mostar Central Zone	521	469	128	109	76	39	630	545	167	26.51%	26.09%	21.63%	12.09%	Jun-02
Mostar Old Town	1,432	1,143	802	1,053	949	420	2,485	2,092	1,222	49.18%	47.51%	33.26%	35.38%	Jun-02
Mostar South-East	3	1	0	648	549	317	651	550	317	48.69%	44.89%	61.23%	8.65%	Jun-02
Mostar South-West	3,801	2,612	1,945	305	135	104	4,106	2,747	2,049	49.90%	47.44%	32.56%	10.14%	Jun-02
Neum	28	28	21	169	158	151	197	186	172	87.31%	87.31%	82.45%	59.88%	Jun-02
Prozor / Rama	210	210	205	171	171	156	381	381	361	94.75%	93.18%	88.92%	76.53%	Jun-02
Stolac	392	378	304	631	439	416	1,023	817	720	70.38%	68.24%	50.85%	1.64%	Jun-02
Total HERZEGOVINA-NERETVA:	10,688	7,970	6,141	8,014	5,597	4,444	18,702	13,567	10,585	56.60%	53.98%	41.11%	16.84%	
Grude	5	5	0	0	0	0	5	5	0	0.00%	0.00%	0.00%	0.00%	May-02
Ljubuski	62	62	50	210	208	183	272	270	233	85.66%	76.57%	65.55%	43.25%	Jun-02
Posusje	5	3	2	0	0	0	5	3	2	40.00%	40.00%	40.00%	16.67%	Jun-02
Siroki Brijeg	0	0	0	3	0	0	3	0	0	0.00%	0.00%	0.00%	0.00%	Jun-02
Total WEST HERZEGOVINA:	72	70	52	213	208	183	285	278	235	82.46%	74.05%	65.25%	42.91%	
Centar / Stari Grad	5,992	4,029	2,705	1,106	1,023	458	7,098	5,052	3,163	44.56%	43.16%	33.24%	13.22%	Jun-02
Ilidza / Hadzici	4,340	4,340	1,889	3,631	2,814	1,333	7,971	7,154	3,222	40.42%	39.43%	35.77%	22.14%	Jun-02
Novi Grad	10,381	10,381	5,829	2,033	1,814	1,408	12,414	12,195	7,237	58.30%	56.59%	49.54%	24.42%	Jun-02
Novo Sarajevo	9,641	9,641	4,535	1,240	1,218	990	10,881	10,859	5,525	50.78%	48.53%	42.75%	22.26%	Jun-02
Vogosca / Ilijas	3,439	3,439	1,132	3,024	2,655	1,072	6,463	6,094	2,204	34.10%	32.57%	33.74%	23.05%	Jun-02
Total SARAJEVO:	33,793	31,830	16,090	11,034	9,524	5,261	44,827	41,354	21,351	47.63%	45.99%	40.92%	21.44%	
Bosansko Grahovo	41	38	31	156	25	24	197	63	55	27.92%	27.92%	27.92%	42.19%	Sep-01
Drvar	940	940	711	1,778	1,621	1,292	2,718	2,561	2,003	73.69%	66.60%	37.39%	5.53%	Jun-02
Glamoc	428	297	216	537	312	193	965	609	409	42.38%	39.02%	29.05%	4.59%	Jun-02
Kupres	275	230	178	226	209	174	501	439	352	70.26%	67.66%	59.77%	10.40%	Jun-02
Livno	330	297	260	230	210	201	560	507	461	82.32%	81.14%	76.67%	53.75%	Jun-02
Tomislavgrad	57	48	40	103	90	90	160	138	130	81.25%	78.08%	71.34%	46.67%	Jun-02
Total CANTON 10:	2,071	1,850	1,436	3,030	2,467	1,974	5,101	4,317	3,410	66.85%	62.05%	42.83%	12.90%	
Total FEDERATION :	79,921	71,633	47,736	62,211	48,713	35,183	142,132	120,346	82,919	58.34%	56.74%	49.40%	28.75%	
%		90%	60%		78%	57%		85%	58%					

* Implementation Ratio = Total number of repossessions / Total number of claims expressed in percentage form

Source: Local Authorities / PLIP (Property Legislation Implementation Plan) Focal Points

REVIEW OF IMPLEMENTATION OF THE PROPERTY LAWS IN REPUBLIKA SRPSKA

30 June 2002

MUNICIPALITIES	Socially Owned Property			Private Property			Total			Implement-ation Ratio*	Previous Impl. Ratio	Implementation Ratio		Last Update
	No.of Claims	No.of Decisions	Repossessions	No.of Claims	No.of Decisions	Repossessions	No.of Claims	No.of Decisions	Repossessions			end 2001	end 2000	
Banja Luka	9,222	4,807	3,367	7,757	3,295	2,668	16,979	8,102	6,035	35.54%	33.13%	24.86%	8.56%	Jun-02
B.Dubica / Kozarska Dubica	208	189	119	1,133	977	685	1,341	1,166	804	59.96%	58.22%	49.96%	17.95%	Jun-02
B.Gradiska / Gradiska	407	399	277	4,506	3,401	2,338	4,913	3,800	2,615	53.23%	50.97%	42.17%	22.85%	Jun-02
B.Novi / Novi Grad	514	468	370	1,235	1,144	911	1,749	1,612	1,281	73.24%	72.95%	65.13%	16.84%	Jun-02
B.Samac / Samac	406	362	340	1,282	941	777	1,688	1,303	1,117	66.17%	61.25%	47.33%	18.77%	Jun-02
Berkovici	1	1	1	5	5	4	6	6	5	83.33%	83.33%	80.00%	0.00%	Jun-02
Bijeljina	649	492	316	8,328	4,242	4,167	8,977	4,734	4,483	49.94%	47.28%	36.96%	15.68%	Jun-02
Bileca	134	134	105	303	295	189	437	429	294	67.28%	65.89%	61.03%	23.44%	Jun-02
Bosanska / Srpska Kostajnica	27	27	10	337	335	273	364	362	283	77.75%	74.66%	69.01%	47.60%	Jun-02
Bosanski / Srpski Brod	1,093	945	559	2,537	552	421	3,630	1,497	980	27.00%	35.44%	21.48%	12.93%	Jun-02
Bratunac	166	147	115	1,575	1,167	644	1,741	1,314	759	43.60%	34.44%	15.77%	3.54%	Jun-02
Cajnice	94	94	60	229	221	91	323	315	151	46.75%	46.27%	39.20%	4.45%	Jun-02
Celinac	59	56	41	254	256	169	313	312	210	67.09%	63.75%	51.48%	34.60%	Jun-02
Derвента	1,133	765	741	4,679	3,297	3,052	5,812	4,062	3,793	65.26%	64.70%	24.27%	9.32%	Jun-02
Doboj	2,819	1,917	1,866	6,306	3,210	2,322	9,125	5,127	4,188	45.90%	43.80%	37.91%	15.60%	Jun-02
Foca / Srbinje	1,045	1,045	691	1,697	1,186	389	2,742	2,231	1,080	39.39%	36.73%	24.20%	2.04%	Jun-02
Gacko	274	240	204	342	306	161	616	546	365	59.25%	47.29%	39.68%	14.23%	Jun-02
Han Pijesak	59	58	41	2	1	0	61	59	41	67.21%	65.57%	56.25%	10.19%	Jun-02
Kalinovik	64	64	49	29	29	20	93	93	69	74.19%	72.04%	64.13%	39.19%	Jun-02
Kotor Varos	291	289	198	1,270	1,241	813	1,561	1,530	1,011	64.77%	55.04%	47.96%	63.65%	Jun-02
Laktasi	31	31	24	584	568	363	615	599	387	62.93%	61.18%	55.45%	37.14%	Jun-02
Ljubinje	12	12	11	42	40	23	54	52	34	62.96%	60.38%	22.37%	14.52%	Jun-02
Lopare	95	95	89	732	731	693	827	826	782	94.56%	92.62%	75.53%	33.07%	Jun-02
Milici	62	61	36	178	178	73	240	239	109	45.42%	44.73%	7.86%	7.86%	Jun-02
Modrica	524	524	462	2,338	2,338	1,424	2,862	2,862	1,886	65.90%	48.31%	39.01%	10.13%	Jun-02
Mrkonjic Grad	184	176	169	711	752	500	895	928	669	74.75%	72.13%	61.27%	18.69%	Jun-02
Nevesinje	34	31	30	551	536	485	585	567	515	88.03%	84.34%	33.92%	24.81%	Jun-02
Odzak / Vukosavlje	0	0	0	489	489	423	489	489	423	86.50%	82.98%	77.92%	19.90%	Jun-02
Osmaci	3	3	3	278	275	226	281	278	229	81.49%	76.45%	30.29%	8.58%	Jun-02
Pale	210	210	155	573	573	349	783	783	504	64.37%	61.38%	53.34%	19.44%	Jun-02
Pelagicevo	7	7	5	155	155	66	162	162	71	43.83%	38.89%	22.36%	16.39%	Jun-02
Petrovo	35	33	25	73	73	63	108	106	88	81.48%	81.37%	66.29%	51.47%	Jun-02
Prijedor	2,027	1,496	1,159	8,455	5,962	3,119	10,482	7,458	4,278	40.81%	38.77%	24.52%	8.94%	Jun-02
Prnjavor	155	150	99	2,086	1,440	1,007	2,241	1,590	1,106	49.35%	47.21%	33.48%	15.60%	Jun-02
Ribnik / Kljuc	25	22	21	8	6	4	33	28	25	75.76%	75.76%	80.65%	73.08%	Apr-02
Rogatica	390	389	283	1,710	678	494	2,100	1,067	777	37.00%	33.35%	24.32%	6.61%	Jun-02
Rudo	170	170	145	692	683	193	862	853	338	39.21%	38.60%	32.07%	3.49%	Jun-02
Sekovici	51	51	41	97	97	72	148	148	113	76.35%	76.35%	70.63%	38.41%	Jun-02
Sipovo	111	95	53	491	402	121	602	497	174	28.90%	43.29%	37.79%	28.66%	Jun-02
Skender Vakuf / Knezevo	78	78	39	269	260	189	347	338	228	65.71%	61.38%	49.57%	23.17%	Jun-02
Sokolac	81	79	46	516	490	197	597	569	243	40.70%	38.86%	26.57%	11.27%	Jun-02
Srbac	60	60	59	158	158	135	218	218	194	88.99%	88.89%	78.87%	53.88%	Jun-02
Srebrenica	534	495	356	1,823	943	352	2,357	1,438	708	30.04%	22.86%	8.29%	2.18%	Jun-02
Srpska Ilidza	264	282	164	1,003	978	623	1,267	1,260	787	62.12%	52.36%	23.78%	9.31%	Jun-02
Srpsko Gorazde	12	11	9	379	389	163	391	400	172	43.99%	35.31%	21.20%	3.61%	Jun-02
Srpsko Novo Sarajevo	8	6	2	373	377	293	381	383	295	77.43%	77.43%	73.31%	33.81%	May-02

REVIEW OF IMPLEMENTATION OF THE PROPERTY LAWS IN REPUBLIKA SRPSKA

30 June 2002

MUNICIPALITIES	Socially Owned Property			Private Property			Total			Implement- ation Ratio*	Previous Impl. Ratio	Implementation Ratio		Last Update
	No.of Claims	No.of Decisions	Repossessions	No.of Claims	No.of Decisions	Repossessions	No.of Claims	No.of Decisions	Repossessions			end 2001	end 2000	
Srpsko Orasje	1	1	1	16	16	16	17	17	17	100.00%	100.00%	100.00%	100.00%	Jun-02
Teslic	759	620	558	1,891	1,442	1,277	2,650	2,062	1,835	69.25%	67.35%	34.10%	12.08%	Jun-02
Trebinje	749	749	542	1,074	571	483	1,823	1,320	1,025	56.23%	53.95%	42.18%	12.81%	Jun-02
Trnovo RS	89	85	55	320	315	263	409	400	318	77.75%	76.28%	44.16%	41.23%	Jun-02
Ugljevik	133	132	114	570	569	333	703	701	447	63.58%	57.65%	38.55%	9.20%	Jun-02
Visegrad	500	492	347	2,100	704	554	2,600	1,196	901	34.65%	32.46%	22.20%	3.67%	Jun-02
Vlasenica	347	321	268	1,453	1,021	604	1,800	1,342	872	48.44%	45.85%	21.88%	16.58%	Jun-02
Zvornik	1,174	817	609	5,107	1,767	1,395	6,281	2,584	2,004	31.91%	29.31%	16.18%	3.15%	Jun-02
Total RS :	27,580	20,283	15,449	81,101	52,077	36,669	108,681	72,360	52,118	47.96%	45.30%	30.64%	13.21%	
%		74%	56%		64%	45%		67%	48%					

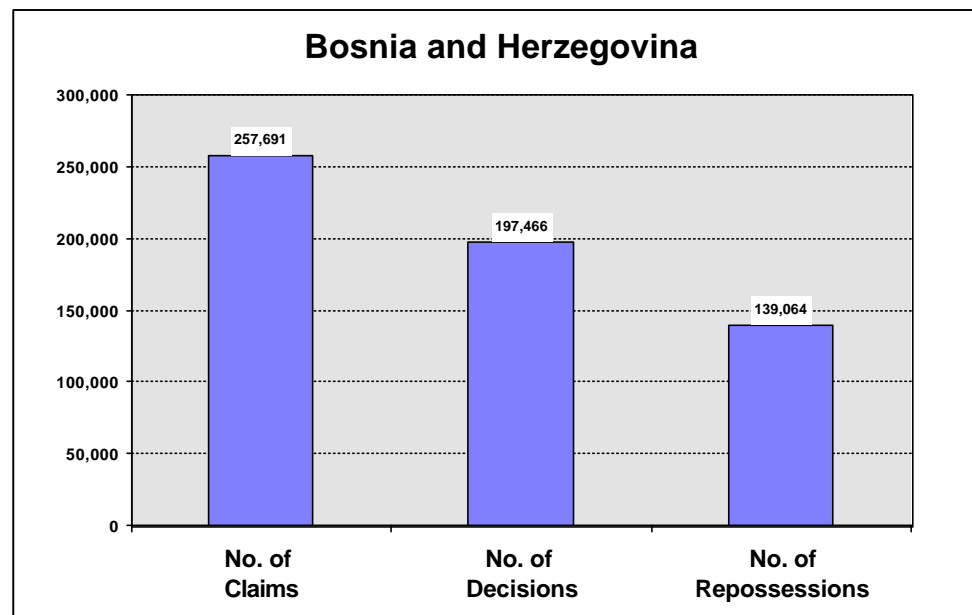
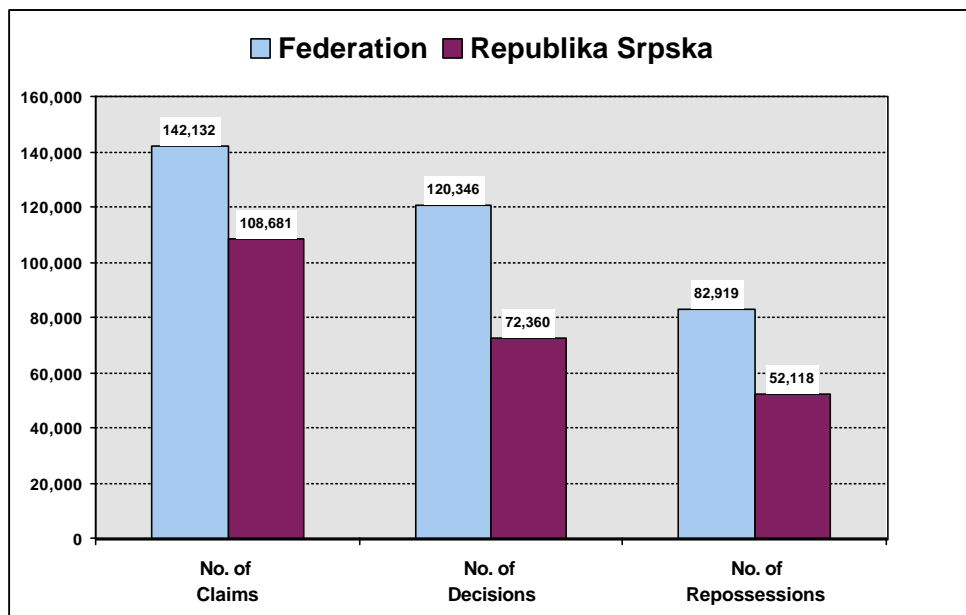
* Implementation Ratio = Total number of repossessions / Total number of claims expressed in percentage form

IMPLEMENTATION OF THE PROPERTY LAWS IN BOSNIA AND HERZEGOVINA - SUMMARY

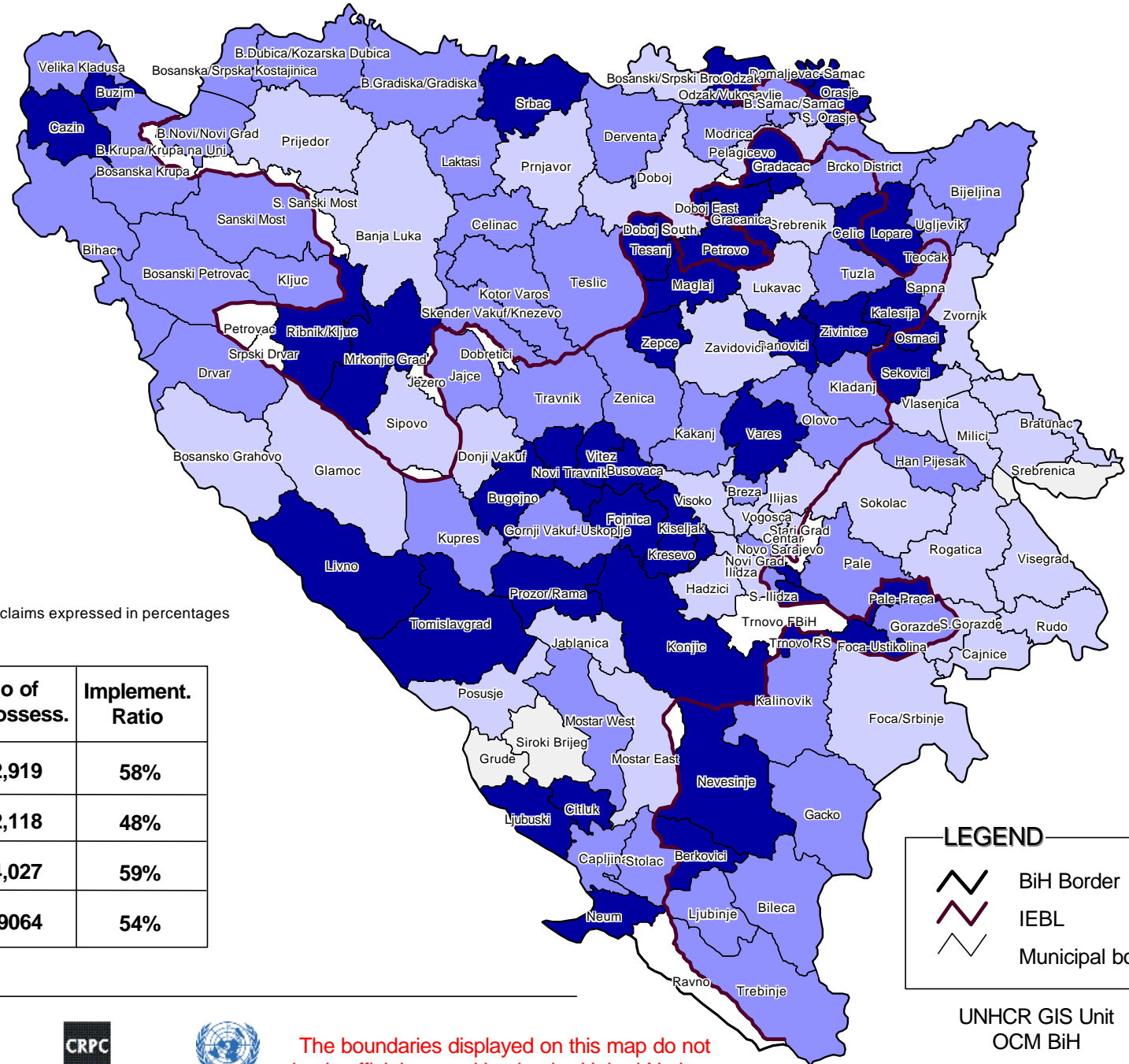
30 June 2002

Bosnia and Herzegovina	Socially Owned Property			Private Property			Total			Implement-ation Ratio*	Previous Implement. Ratio	Implementation Ratio	
	No. of Claims	No. of Decisions	No. of Repossession s	No. of Claims	No. of Decisions	No. of Repossession s	No. of Claims	No. of Decisions	No. of Repossession s			as at end 2001	as at end 2000
Total FEDERATION :	79,921	71,633	47,736	62,211	48,713	35,183	142,132	120,346	82,919	58%	57%	49%	29%
%		90%	60%		78%	57%		85%	58%				
Total REPUBLIKA SRPSKA :	27,580	20,283	15,449	81,101	52,077	36,669	108,681	72,360	52,118	48%	45%	31%	13%
%		74%	56%		64%	45%		67%	48%				
BRCKO DISTRICT :	2,092	1,612	1,477	4,786	3,148	2,550	6,878	4,760	4,027	59%	55%	39%	14%
%		77%	71%		66%	53%		69%	59%				
GRAND TOTAL :	109,593	93,528	64,662	148,098	103,938	74,402	257,691	197,466	139,064	54%	52%	41%	21%
%		85%	59%		70%	50%		77%	54%				

* Implementation Ratio = Total number of repossessions / Total number of claims expressed in percentage form



IMPLEMENTATION OF THE PROPERTY LAWS IN BOSNIA AND HERZEGOVINA



Implementation Ratio *

- more than 75%
- 50% to 75%
- 25% to 50%
- less than 25%
- w/o claims

* Implementation Ratio = Number of repossessions / Number of claims expressed in percentages

	No of Claims	No of Repossess.	Implement. Ratio
Federation of BiH (FBiH)	142,132	82,919	58%
Republika Srpska (RS)	108,681	52,118	48%
Brcko District	6,878	4,027	59%
Total BiH	257,691	139,064	54%

LEGEND

- BiH Border
- IEBL
- Municipal border

The boundaries displayed on this map do not imply official recognition by the United Nations