

A large, stylized graphic of a key, rendered in yellow and grey, positioned centrally behind the title text. The key is oriented vertically, with the head of the key at the top and the shaft pointing downwards. The background behind the key consists of overlapping yellow and blue shapes.

STATISTICS

IMPLEMENTATION OF THE PROPERTY LAWS IN BOSNIA AND HERZEGOVINA

31 May 2002

EXPLANATORY NOTE

- **These statistics reflect the implementation of the property laws in Bosnia and Herzegovina since the passing of the property laws as amended in October 1999.**
- **These statistics are collected every month by staff of OSCE, UNHCR and OHR in the field on the basis of information provided to them by local authorities.**
- **The number of claims is equal to the total number of properties on which a claim was filed with the Municipal authorities.**
- **The number of decisions is the total number of decisions issued by the Municipal authorities.**
- **The number of repossessions is the total number of occupancy right holders or owners that have collected their keys from the municipal authorities.**
- **The implementation ratio is the total number of repossessions divided by the total number of claims expressed in percentage form.**
- **These statistics do not include information on decisions and repossessions on destroyed property, business premises or land.**
- **In some municipalities, the current implementation ratio is lower than the implementation ratio as at the end of 2000. This is due to the exclusion of destroyed property from the number of repossessions, but not from the number of claims.**
- **In some municipalities, the number of claims for socially owned property has increased since last month regardless of the deadline for submission of claims for socially owned property. This is due to the filing of requests for the enforcement of CRPC claims .**

REVIEW OF IMPLEMENTATION OF THE PROPERTY LAWS IN FEDERATION OF BIH

31 May 2002

MUNICIPALITIES / CANTONS	Socially Owned Property			Private Property			Total			Implement-ation Ratio*	Previous Impl. Ratio	Implementatin Ratio		Last Update
	No.of Claims	No.of Decisions	Repossessions	No.of Claims	No.of Decisions	Repossessions	No.of Claims	No.of Decisions	Repossessions			end 2001	end 2000	
Bihac	1,620	1,618	1,043	1,310	1,058	529	2,930	2,676	1,572	53.65%	53.14%	56.26%	38.31%	May-02
Bosanska Krupa	484	453	386	1,896	1,341	985	2,380	1,794	1,371	57.61%	49.26%	55.67%	29.29%	May-02
Bosanski Petrovac	420	420	326	1,146	1,050	826	1,566	1,470	1,152	73.56%	71.95%	76.92%	45.51%	May-02
Buzim	7	7	7	1	1	1	8	8	8	100.00%	100.00%	100.00%	25.00%	Aug-01
Cazin	107	107	70	62	60	47	169	167	117	69.23%	68.05%	66.29%	60.47%	May-02
Kljuc	821	812	527	821	686	524	1,642	1,498	1,051	64.01%	61.64%	47.09%	24.46%	May-02
Sanski Most	988	932	695	2,915	1,556	1,255	3,903	2,488	1,950	49.96%	48.29%	41.51%	24.90%	May-02
Velika Kladusa	441	427	291	50	41	38	491	468	329	67.01%	64.42%	70.92%	70.92%	May-02
Total UNA-SANA:	4,888	4,776	3,345	8,201	5,793	4,205	13,089	10,569	7,550	57.68%	54.96%	53.12%	32.80%	
Domaljevac - Samac	9	9	9	4	4	3	13	13	12	92.31%	92.31%	83.33%	33.33%	May-02
Odzak	234	232	208	193	161	128	427	393	336	78.69%	77.16%	77.69%	28.04%	May-02
Orasje	159	159	147	152	152	131	311	311	278	89.39%	86.50%	64.62%	43.75%	May-02
Total POSAVINA:	402	400	364	349	317	262	751	717	626	83.36%	81.27%	72.01%	34.06%	
Banovici	1,025	1,025	775	72	72	46	1,097	1,097	821	74.84%	73.29%	63.43%	31.69%	May-02
Celic	40	40	30	184	184	179	224	224	209	93.30%	92.79%	77.00%	69.15%	May-02
Doboj - East	0	0	0	10	10	10	10	10	10	100.00%	100.00%	100.00%	55.56%	Oct-01
Gracanica	246	232	214	446	444	387	692	676	601	86.85%	85.65%	68.16%	43.62%	May-02
Gradacac	251	251	231	377	374	241	628	625	472	75.16%	73.76%	69.33%	53.14%	May-02
Kalesija	111	111	104	981	981	840	1,092	1,092	944	86.45%	85.87%	83.86%	32.57%	May-02
Kladanj	171	171	131	169	102	43	340	273	174	51.18%	48.52%	44.65%	16.31%	May-02
Lukavac	796	791	761	1,424	847	106	2,220	1,638	867	39.05%	38.86%	37.17%	31.65%	May-02
Sapna	23	23	15	117	117	79	140	140	94	67.14%	65.71%	43.07%	40.16%	May-02
Srebrenik	78	78	52	981	734	273	1,059	812	325	30.69%	27.61%	17.78%	21.46%	May-02
Teocak	7	6	5	8	7	6	15	13	11	73.33%	73.33%	29.63%	6.67%	May-02
Tuzla	4,770	3,614	3,082	2,435	1,786	1,224	7,205	5,400	4,306	59.76%	55.28%	48.10%	23.20%	May-02
Zivinice	414	403	337	457	395	350	871	798	687	78.87%	71.72%	62.78%	42.39%	May-02
Total TUZLA:	7,932	6,745	5,737	7,661	6,053	3,784	15,593	12,798	9,521	61.06%	57.95%	50.48%	29.30%	
Breza	181	181	180	388	312	187	569	493	367	64.50%	48.80%	53.97%	55.44%	May-02
Doboj - South	0	0	0	15	15	14	15	15	14	93.33%	93.33%	93.33%	73.33%	Oct-01
Kakanj	1,089	914	686	1,109	821	493	2,198	1,735	1,179	53.64%	49.77%	48.52%	37.28%	May-02
Maglaj	619	619	612	1,876	1,580	1,348	2,495	2,199	1,960	78.56%	76.14%	75.42%	27.77%	May-02
Olovo	227	227	135	216	151	71	443	378	206	46.50%	44.87%	45.60%	16.33%	May-02
Tesanj	157	157	126	470	454	349	627	611	475	75.76%	74.28%	70.68%	46.20%	May-02
Usora	3	3	3	10	9	9	13	12	12	92.31%	92.31%	76.92%	87.50%	Feb-02
Vares	961	961	826	33	33	28	994	994	854	85.92%	82.68%	76.35%	52.96%	May-02
Visoko	334	333	228	1,126	957	437	1,460	1,290	665	45.55%	29.17%	29.58%	30.81%	May-02
Zavidovici	1,185	1,062	868	2,802	1,039	824	3,987	2,101	1,692	42.44%	42.13%	30.82%	22.30%	May-02
Zenica	5,775	4,508	3,321	1,763	1,273	583	7,538	5,781	3,904	51.79%	49.39%	44.40%	21.45%	May-02
Zepce	323	323	322	1,270	1,253	1,207	1,593	1,576	1,529	95.98%	95.87%	84.05%	84.05%	May-02
Total ZENICA-DOBOJ:	10,854	9,288	7,307	11,078	7,897	5,550	21,932	17,185	12,857	58.62%	54.62%	50.84%	32.19%	
Foca - Ustikolina	50	50	44	92	92	64	142	142	108	76.06%	76.06%	16.52%	5.91%	May-02
Gorazde	1,246	1,246	816	276	276	194	1,522	1,522	1,010	66.36%	63.11%	51.06%	19.98%	May-02
Pale - Praca	2	2	2	5	5	5	7	7	7	100.00%	100.00%	100.00%	22.73%	Jun-01
Total BOSNIA-PODRINJE:	1,298	1,298	862	373	373	263	1,671	1,671	1,125	67.32%	64.37%	43.10%	17.69%	
Bugojno	1,060	910	853	2,638	2,445	2,147	3,698	3,355	3,000	81.12%	79.76%	82.09%	56.34%	May-02
Busovaca	102	102	102	686	678	656	788	780	758	96.19%	96.31%	98.68%	70.27%	May-02
Donji Vakuf	339	338	234	793	575	234	1,132	913	468	41.34%	38.85%	32.18%	26.24%	May-02

Source: Local Authorities / PLIP (Property Legislation Implementation Plan) Focal Points

REVIEW OF IMPLEMENTATION OF THE PROPERTY LAWS IN FEDERATION OF BiH

31 May 2002

MUNICIPALITIES / CANTONS	Socially Owned Property			Private Property			Total			Implement-ation Ratio*	Previous Impl. Ratio	Implementatin Ratio		Last Update
	No.of Claims	No.of Decisions	Repossessions	No.of Claims	No.of Decisions	Repossessions	No.of Claims	No.of Decisions	Repossessions			end 2001	end 2000	
Fojnica	236	236	220	454	420	417	690	656	637	92.32%	92.17%	87.37%	81.59%	May-02
Gornji Vakuf - Uskoplje	174	159	142	172	156	108	346	315	250	72.25%	66.67%	56.79%	36.58%	May-02
Jajce	1,595	1,188	930	1,638	758	661	3,233	1,946	1,591	49.21%	46.98%	47.05%	26.93%	May-02
Kiseljak	112	110	71	1,939	1,953	1,883	2,051	2,063	1,954	95.27%	94.87%	93.46%	81.57%	May-02
Kresevo	18	18	18	130	130	126	148	148	144	97.30%	97.30%	95.95%	88.81%	May-02
Novi Travnik	2,108	2,080	1,685	317	317	288	2,425	2,397	1,973	81.36%	80.80%	71.75%	40.91%	May-02
Travnik	1,467	1,450	1,005	1,637	1,231	1,087	3,104	2,681	2,092	67.40%	67.44%	69.89%	63.37%	May-02
Vitez	592	543	519	732	725	708	1,324	1,268	1,227	92.67%	92.72%	91.91%	67.34%	May-02
Total CENTRAL BOSNIA:	7,803	7,134	5,779	11,136	9,388	8,315	18,939	16,522	14,094	74.42%	73.44%	73.26%	55.81%	
Capljina	740	462	390	1,049	610	571	1,789	1,072	961	53.72%	52.22%	44.72%	7.25%	May-02
Citluk	5	5	5	3	3	3	8	8	8	100.00%	100.00%	100.00%	100.00%	Sep-00
Jablanica	170	165	105	303	144	92	473	309	197	41.65%	40.04%	59.35%	40.61%	May-02
Konjic	841	831	794	1,690	1,150	1,150	2,531	1,981	1,944	76.81%	78.76%	68.52%	41.92%	May-02
Mostar - North	76	58	22	1,550	878	699	1,626	936	721	44.34%	42.63%	28.86%	4.05%	May-02
Mostar - South	0	0	0	125	108	70	125	108	70	56.00%	20.98%	21.76%	48.37%	May-02
Mostar - West	2,460	1,521	1,307	169	25	47	2,629	1,546	1,354	51.50%	47.60%	36.96%	11.29%	May-02
Mostar Central Zone	514	461	125	107	68	37	621	529	162	26.09%	25.65%	21.63%	12.09%	May-02
Mostar Old Town	1,424	1,123	771	1,049	929	404	2,473	2,052	1,175	47.51%	41.92%	33.26%	35.38%	May-02
Mostar South-East	3	1	0	643	501	290	646	502	290	44.89%	43.17%	61.23%	8.65%	May-02
Mostar South-West	3,801	2,520	1,851	305	131	97	4,106	2,651	1,948	47.44%	44.23%	32.56%	10.14%	May-02
Neum	28	28	21	169	158	151	197	186	172	87.31%	86.29%	82.45%	59.88%	May-02
Prozor / Rama	210	210	205	171	171	150	381	381	355	93.18%	90.81%	88.92%	76.53%	May-02
Stolac	389	375	299	631	433	397	1,020	808	696	68.24%	68.25%	50.85%	1.64%	May-02
Total HERZEGOVINA-NERETVA:	10,661	7,760	5,895	7,964	5,309	4,158	18,625	13,069	10,053	53.98%	50.10%	41.11%	16.84%	
Grude	5	5	0	0	0	0	5	5	0	0.00%	0.00%	0.00%	0.00%	May-02
Ljubuski	62	61	50	241	241	182	303	302	232	76.57%	74.03%	65.55%	43.25%	May-02
Posusje	5	3	2	0	0	0	5	3	2	40.00%	40.00%	40.00%	16.67%	May-02
Siroki Brijeg	0	0	0	3	0	0	3	0	0	0.00%	0.00%	0.00%	0.00%	May-02
Total WEST HERZEGOVINA:	72	69	52	244	241	182	316	310	234	74.05%	71.65%	65.25%	42.91%	
Centar / Stari Grad	5,892	3,961	2,581	1,093	969	434	6,985	4,930	3,015	43.16%	40.47%	33.24%	13.22%	May-02
Ilidza / Hadzici	4,261	4,261	1,806	3,586	2,761	1,288	7,847	7,022	3,094	39.43%	37.72%	35.77%	22.14%	May-02
Novi Grad	10,248	10,248	5,598	2,016	1,756	1,342	12,264	12,004	6,940	56.59%	54.47%	49.54%	24.42%	May-02
Novo Sarajevo	9,472	9,472	4,340	1,225	1,204	851	10,697	10,676	5,191	48.53%	46.07%	42.75%	22.26%	May-02
Vogosca / Ilijas	3,392	3,392	1,043	2,994	2,626	1,037	6,386	6,018	2,080	32.57%	30.79%	33.74%	23.05%	May-02
Total SARAJEVO:	33,265	31,334	15,368	10,914	9,316	4,952	44,179	40,650	20,320	45.99%	43.84%	40.92%	21.44%	
Bosansko Grahovo	41	38	31	156	25	24	197	63	55	27.92%	27.92%	27.92%	42.19%	Sep-01
Drvar	993	985	659	1,860	1,522	1,241	2,853	2,507	1,900	66.60%	50.21%	37.39%	5.53%	May-02
Glamoc	428	293	194	533	277	181	961	570	375	39.02%	35.86%	29.05%	4.59%	May-02
Kupres	275	227	170	226	196	169	501	423	339	67.66%	63.45%	59.77%	10.40%	May-02
Livno	330	296	260	232	217	196	562	513	456	81.14%	80.13%	76.67%	53.75%	May-02
Tomislavgrad	57	45	39	89	87	75	146	132	114	78.08%	79.33%	71.34%	46.67%	May-02
Total CANTON 10:	2,124	1,884	1,353	3,096	2,324	1,886	5,220	4,208	3,239	62.05%	52.05%	42.83%	12.90%	
Total FEDERATION :	79,299	70,688	46,062	61,016	47,011	33,557	140,315	117,699	79,619	56.74%	53.80%	49.40%	28.75%	
%		89%	58%		77%	55%		84%	57%					

* Implementation Ratio = Total number of repossessions / Total number of claims expressed in percentage form

Source: Local Authorities / PLIP (Property Legislation Implementation Plan) Focal Points

REVIEW OF IMPLEMENTATION OF THE PROPERTY LAWS IN REPUBLIKA SRPSKA

31 May 2002

MUNICIPALITIES	Socially Owned Property			Private Property			Total			Implement-ation Ratio*	Previous Impl. Ratio	Implementation Ratio		Last Update
	No.of Claims	No.of Decisions	Repossessions	No.of Claims	No.of Decisions	Repossessions	No.of Claims	No.of Decisions	Repossessions			end 2001	end 2000	
Banja Luka	9,222	4,562	3,092	7,716	3,136	2,520	16,938	7,698	5,612	33.13%	31.06%	24.86%	8.56%	May-02
B.Dubica / Kozarska Dubica	208	176	113	1,130	930	666	1,338	1,106	779	58.22%	56.64%	49.96%	17.95%	May-02
B.Gradiska / Gradiska	400	399	265	4,473	3,299	2,219	4,873	3,698	2,484	50.97%	48.63%	42.17%	22.85%	May-02
B.Novi / Novi Grad	507	461	365	1,223	1,131	897	1,730	1,592	1,262	72.95%	71.72%	65.13%	16.84%	May-02
B.Samac / Samac	407	352	324	1,286	896	713	1,693	1,248	1,037	61.25%	57.01%	47.33%	18.77%	May-02
Berkovici	1	1	1	5	5	4	6	6	5	83.33%	83.33%	80.00%	0.00%	May-02
Bijeljina	641	458	306	8,282	4,009	3,913	8,923	4,467	4,219	47.28%	44.42%	36.96%	15.68%	May-02
Bileca	134	134	100	297	285	184	431	419	284	65.89%	63.87%	61.03%	23.44%	May-02
Bosanska / Srpska Kostajnica	27	27	10	336	335	261	363	362	271	74.66%	72.30%	69.01%	47.60%	May-02
Bosanski / Srpski Brod	1,086	912	513	1,524	605	412	2,610	1,517	925	35.44%	34.39%	21.48%	12.93%	May-02
Bratunac	166	147	108	1,701	994	535	1,867	1,141	643	34.44%	29.73%	15.77%	3.54%	May-02
Cajnice	94	94	60	228	221	89	322	315	149	46.27%	44.59%	39.20%	4.45%	May-02
Celinac	59	56	40	250	252	157	309	308	197	63.75%	59.74%	51.48%	34.60%	May-02
Derвента	1,118	743	729	4,655	3,211	3,006	5,773	3,954	3,735	64.70%	63.46%	24.27%	9.32%	May-02
Doboj	2,792	1,832	1,806	6,266	3,038	2,161	9,058	4,870	3,967	43.80%	42.04%	37.91%	15.60%	May-02
Foca / Srbinje	1,044	1,044	632	1,700	1,126	376	2,744	2,170	1,008	36.73%	31.33%	24.20%	2.04%	May-02
Gacko	273	240	196	336	271	92	609	511	288	47.29%	45.35%	39.68%	14.23%	May-02
Han Pijesak	59	58	40	2	1	0	61	59	40	65.57%	65.57%	56.25%	10.19%	May-02
Kalinovik	64	64	49	29	29	18	93	93	67	72.04%	70.97%	64.13%	39.19%	May-02
Kotor Varos	287	287	191	1,497	1,236	791	1,784	1,523	982	55.04%	53.63%	47.96%	63.65%	May-02
Laktasi	31	31	22	577	560	350	608	591	372	61.18%	58.64%	55.45%	37.14%	May-02
Ljubinje	12	12	11	41	40	21	53	52	32	60.38%	60.38%	22.37%	14.52%	May-02
Lopare	95	95	87	731	730	678	826	825	765	92.62%	91.73%	75.53%	33.07%	May-02
Milici	62	61	35	175	175	71	237	236	106	44.73%	42.74%	7.86%	7.86%	May-02
Modrica	524	524	282	2,322	2,322	1,093	2,846	2,846	1,375	48.31%	44.92%	39.01%	10.13%	May-02
Mrkonjic Grad	182	176	167	708	702	475	890	878	642	72.13%	69.90%	61.27%	18.69%	May-02
Nevesinje	33	31	30	548	516	460	581	547	490	84.34%	84.49%	33.92%	24.81%	May-02
Odzak / Vukosavlje	0	0	0	470	470	390	470	470	390	82.98%	81.80%	77.92%	19.90%	May-02
Osmaci	3	3	2	273	272	209	276	275	211	76.45%	71.53%	30.29%	8.58%	May-02
Pale	210	210	153	572	570	327	782	780	480	61.38%	59.28%	53.34%	19.44%	May-02
Pelagicevo	7	7	3	155	155	60	162	162	63	38.89%	36.65%	22.36%	16.39%	May-02
Petrovo	33	33	25	69	69	58	102	102	83	81.37%	76.47%	66.29%	51.47%	May-02
Prijedor	2,020	1,441	1,116	8,491	5,755	2,959	10,511	7,196	4,075	38.77%	36.09%	24.52%	8.94%	May-02
Prnjavor	155	144	97	2,082	1,371	959	2,237	1,515	1,056	47.21%	37.70%	33.48%	15.60%	May-02
Ribnik / Kljuc	25	22	21	8	6	4	33	28	25	75.76%	75.76%	80.65%	73.08%	Apr-02
Rogatica	390	389	256	1,739	646	454	2,129	1,035	710	33.35%	30.51%	24.32%	6.61%	May-02
Rudo	170	170	143	685	618	187	855	788	330	38.60%	37.35%	32.07%	3.49%	May-02
Sekovici	51	51	41	97	97	72	148	148	113	76.35%	75.00%	70.63%	38.41%	May-02
Sipovo	108	108	49	488	395	209	596	503	258	43.29%	38.89%	37.79%	28.66%	May-02
Skender Vakuf / Knezevo	78	78	28	269	259	185	347	337	213	61.38%	58.21%	49.57%	23.17%	May-02
Sokolac	81	77	44	516	484	188	597	561	232	38.86%	37.04%	26.57%	11.27%	May-02
Srbac	60	60	59	156	156	133	216	216	192	88.89%	87.04%	78.87%	53.88%	May-02
Srebrenica	534	487	339	1,863	782	209	2,397	1,269	548	22.86%	21.00%	8.29%	2.18%	May-02
Srpska Ilidza	262	274	153	628	606	313	890	880	466	52.36%	51.07%	23.78%	9.31%	May-02
Srpsko Gorazde	12	11	6	376	376	131	388	387	137	35.31%	32.38%	21.20%	3.61%	May-02
Srpsko Novo Sarajevo	8	6	2	373	377	293	381	383	295	77.43%	75.93%	73.31%	33.81%	May-02

REVIEW OF IMPLEMENTATION OF THE PROPERTY LAWS IN REPUBLIKA SRPSKA

31 May 2002

MUNICIPALITIES	Socially Owned Property			Private Property			Total			Implement- ation Ratio*	Previous Impl. Ratio	Implementation Ratio		Last Update
	No.of Claims	No.of Decisions	Repossessions	No.of Claims	No.of Decisions	Repossessions	No.of Claims	No.of Decisions	Repossessions			end 2001	end 2000	
Srpsko Orasje	1	1	1	16	16	16	17	17	17	100.00%	100.00%	100.00%	100.00%	May-02
Teslic	749	613	540	1,888	1,414	1,236	2,637	2,027	1,776	67.35%	64.59%	34.10%	12.08%	May-02
Trebinje	741	725	514	1,057	527	456	1,798	1,252	970	53.95%	50.84%	42.18%	12.81%	May-02
Trnovo RS	89	85	54	320	314	258	409	399	312	76.28%	74.13%	44.16%	41.23%	May-02
Ugljevik	133	132	114	566	563	289	699	695	403	57.65%	51.87%	38.55%	9.20%	May-02
Visegrad	498	485	326	2,047	625	500	2,545	1,110	826	32.46%	30.62%	22.20%	3.67%	May-02
Vlasenica	347	318	256	1,435	980	561	1,782	1,298	817	45.85%	43.76%	21.88%	16.58%	May-02
Zvornik	1,172	794	576	5,072	1,676	1,254	6,244	2,470	1,830	29.31%	27.11%	16.18%	3.15%	May-02
Total RS :	27,465	19,701	14,492	79,749	49,634	34,072	107,214	69,335	48,564	45.30%	42.71%	30.64%	13.21%	
%		72%	53%		62%	43%		65%	45%					

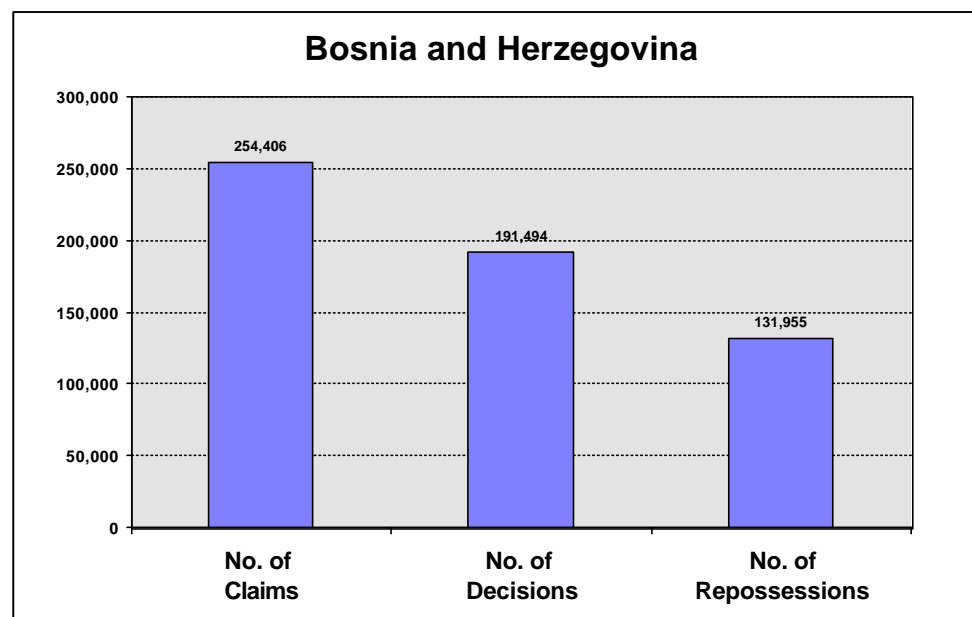
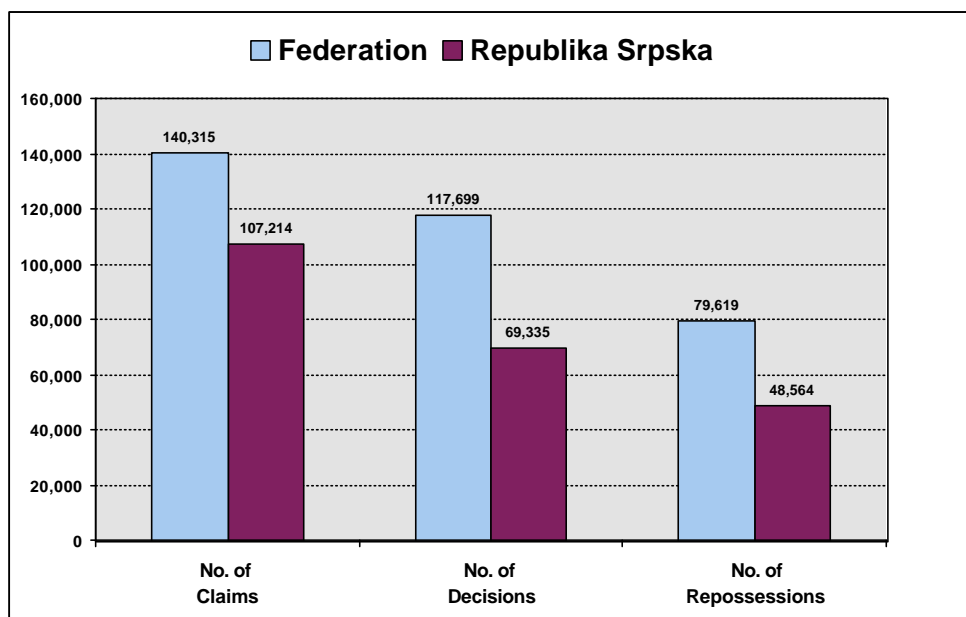
* Implementation Ratio = Total number of repossessions / Total number of claims expressed in percentage form

IMPLEMENTATION OF THE PROPERTY LAWS IN BOSNIA AND HERZEGOVINA - SUMMARY

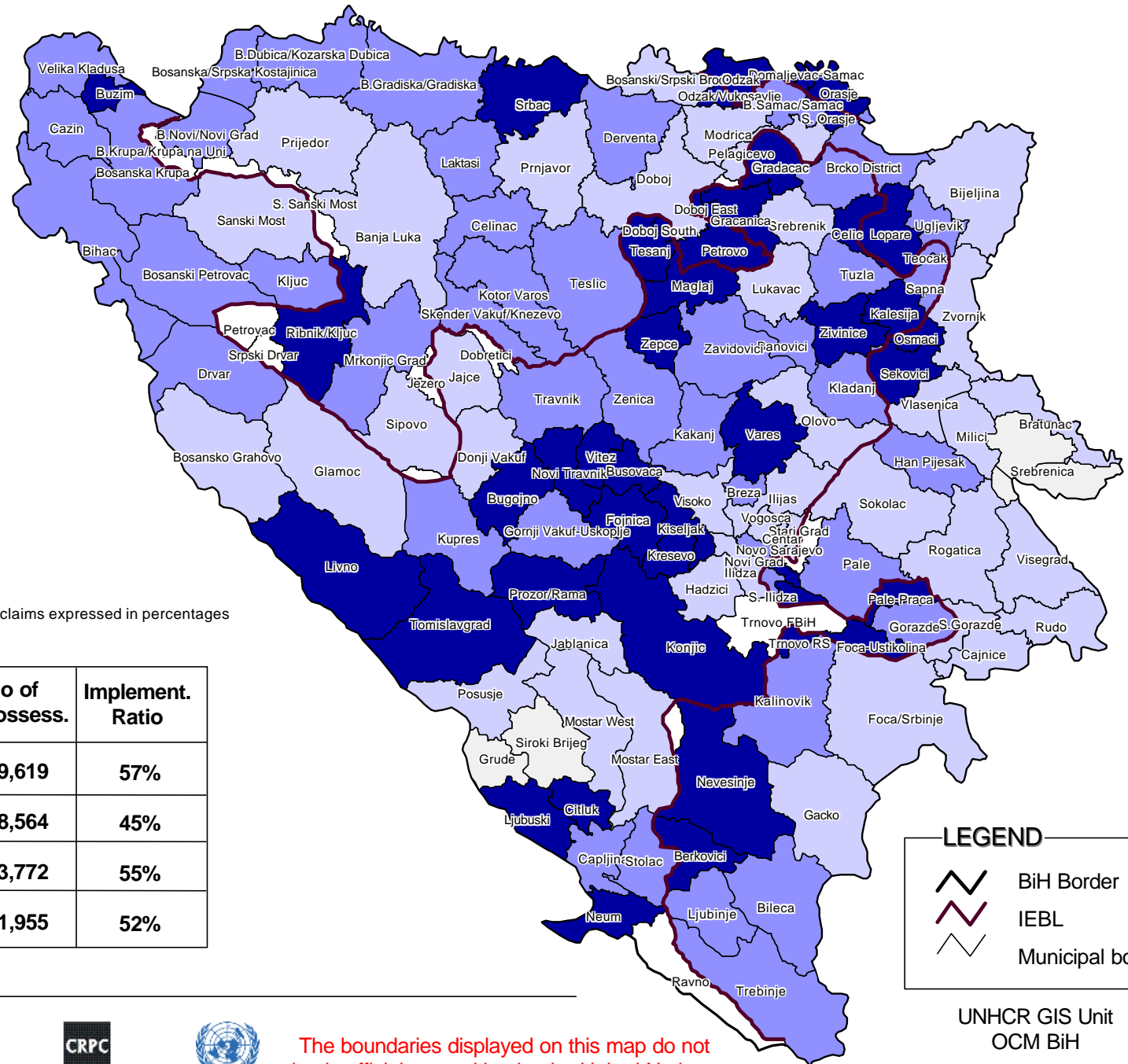
31 May 2002

Bosnia and Herzegovina	Socially Owned Property			Private Property			Total			Implement-ation Ratio*	Previous Implement. Ratio	Implementation Ratio	
	No. of Claims	No. of Decisions	No. of Repossession s	No. of Claims	No. of Decisions	No. of Repossession s	No. of Claims	No. of Decisions	No. of Repossession s			as at end 2001	as at end 2000
Total FEDERATION :	79,299	70,688	46,062	61,016	47,011	33,557	140,315	117,699	79,619	57%	54%	49%	29%
%		89%	58%		77%	55%		84%	57%				
Total REPUBLIKA SRPSKA :	27,465	19,701	14,492	79,749	49,634	34,072	107,214	69,335	48,564	45%	43%	31%	13%
%		72%	53%		62%	43%		65%	45%				
BRCKO DISTRICT :	2,092	1,531	1,367	4,785	2,929	2,405	6,877	4,460	3,772	55%	51%	39%	14%
%		73%	65%		61%	50%		65%	55%				
GRAND TOTAL :	108,856	91,920	61,921	145,550	99,574	70,034	254,406	191,494	131,955	52%	49%	41%	21%
%		84%	57%		68%	48%		75%	52%				

* Implementation Ratio = Total number of repossession s / Total number of claims expressed in percentage form



IMPLEMENTATION OF THE PROPERTY LAWS IN BOSNIA AND HERZEGOVINA



Implementation Ratio *

- more than 75%
- 50% to 75%
- 25% to 50%
- less than 25%
- w/o claims

* Implementation Ratio = Number of repossessions / Number of claims expressed in percentages

	No of Claims	No of Repossess.	Implement. Ratio
Federation of BiH (FBiH)	140,315	79,619	57%
Republika Srpska (RS)	107,214	48,564	45%
Brcko District	6,877	3,772	55%
Total BiH	254,406	131,955	52%

LEGEND

- BiH Border
- IEBL
- Municipal border



The boundaries displayed on this map do not imply official recognition by the United Nations

UNHCR GIS Unit
OCM BiH
Date: 31 May 2002