



# STATISTICS

## IMPLEMENTATION OF THE PROPERTY LAWS

**UNITED NATIONS**

United Nations Mission in  
Bosnia & Herzegovina



Property Law Implementation Plan  
Plan za Sprovedbu Imovinskih Zakona

**CRPC**

Commission for Real Property Claims of  
Displaced Persons and Refugees

**31 December 2000**

## REVIEW OF IMPLEMENTATION OF THE PROPERTY LAWS IN FEDERATION

31 December 2000

MUNICIPALITIES / CANTONS	Socially Owned Property			Private Property			Total			Implement- ation	Previous Impl. Ratio	Last Update
	No of Claims	No of Decisions	Repossession	No of Claims	No of Decisions	Repossession	No of Claims	No of Decisions	Repossession			
Bihac	1,620	1,411	647	716	562	248	2,336	1,973	895	38.31%	37.33%	Dec-00
Bosanska Krupa	470	445	184	701	437	159	1,171	882	343	29.29%	28.70%	Dec-00
Bosanski Petrovac	457	359	188	914	686	436	1,371	1,045	624	45.51%	44.29%	Dec-00
Buzim	7	7	1	1	1	1	8	8	2	25.00%	25.00%	May-00
Cazin	106	106	67	66	50	37	172	156	104	60.47%	65.06%	Dec-00
Kljuc	847	648	219	674	581	153	1,521	1,229	372	24.46%	23.53%	Dec-00
Sanski Most	977	676	327	3,638	1,145	822	4,615	1,821	1,149	24.90%	21.86%	Dec-00
Velika Kladusa	430	426	305	48	34	34	478	460	339	70.92%	70.86%	Dec-00
<b>Total UNA-SANA:</b>	<b>4,914</b>	<b>4,078</b>	<b>1,938</b>	<b>6,758</b>	<b>3,496</b>	<b>1,890</b>	<b>11,672</b>	<b>7,574</b>	<b>3,828</b>	<b>32.80%</b>	<b>31.18%</b>	
Domaljevac - Samac	8	8	2	4	4	2	12	12	4	33.33%	16.67%	Dec-00
Odzak	322	225	159	320	72	21	642	297	180	28.04%	26.73%	Dec-00
Orasje	167	130	104	233	139	71	400	269	175	43.75%	42.71%	Dec-00
<b>Total POSAVINA:</b>	<b>497</b>	<b>363</b>	<b>265</b>	<b>557</b>	<b>215</b>	<b>94</b>	<b>1,054</b>	<b>578</b>	<b>359</b>	<b>34.06%</b>	<b>32.70%</b>	
Banovici	1,020	960	328	97	93	26	1,117	1,053	354	31.69%	27.69%	Dec-00
Celic	39	39	19	149	139	111	188	178	130	69.15%	72.09%	Dec-00
Doboj - East	3	0	0	6	6	5	9	6	5	55.56%	55.56%	Dec-00
Gracanica	246	224	140	444	358	161	690	582	301	43.62%	41.59%	Dec-00
Gradacac	272	270	226	364	319	112	636	589	338	53.14%	53.19%	Dec-00
Kalesija	144	140	105	642	261	151	786	401	256	32.57%	31.87%	Dec-00
Kladanj	166	100	59	208	158	2	374	258	61	16.31%	16.39%	Dec-00
Lukavac	807	609	515	997	563	56	1,804	1,172	571	31.65%	31.89%	Dec-00
Sapna	22	22	14	100	83	35	122	105	49	40.16%	40.50%	Dec-00
Srebrenik	78	78	46	551	190	89	629	268	135	21.46%	24.67%	Dec-00
Teocak	8	5	1	7	2	0	15	7	1	6.67%	6.67%	Dec-00
Tuzla	5,487	2,395	1,184	1,523	673	442	7,010	3,068	1,626	23.20%	21.45%	Dec-00
Zivinice	308	176	174	402	187	127	710	363	301	42.39%	39.57%	Dec-00
<b>Total TUZLA:</b>	<b>8,600</b>	<b>5,018</b>	<b>2,811</b>	<b>5,490</b>	<b>3,032</b>	<b>1,317</b>	<b>14,090</b>	<b>8,050</b>	<b>4,128</b>	<b>29.30%</b>	<b>27.99%</b>	
Breza	227	217	141	150	141	68	377	358	209	55.44%	55.71%	Dec-00
Doboj - South	0	0	0	15	12	11	15	12	11	73.33%	73.33%	Dec-00
Kakanj	1,028	533	360	434	233	185	1,462	766	545	37.28%	35.85%	Dec-00
Maglaj	655	501	353	1,333	832	199	1,988	1,333	552	27.77%	26.02%	Dec-00
Olovo	272	187	44	175	104	29	447	291	73	16.33%	12.24%	Dec-00
Tesanj	157	131	86	369	319	157	526	450	243	46.20%	43.27%	Dec-00
Usora	3	3	3	5	5	4	8	8	7	87.50%	87.50%	Oct-00
Vares	1,395	1,260	732	74	64	46	1,469	1,324	778	52.96%	50.51%	Dec-00
Visoko	328	242	128	545	357	141	873	599	269	30.81%	28.76%	Dec-00
Zavidovici	1,330	686	340	903	222	158	2,233	908	498	22.30%	19.23%	Dec-00
Zenica	6,960	3,624	1,377	850	670	298	7,810	4,294	1,675	21.45%	20.29%	Dec-00
Zepce	305	280	265	1,005	967	836	1,310	1,247	1,101	84.05%	80.11%	Dec-00
<b>Total ZENICA-DOBOJ:</b>	<b>12,660</b>	<b>7,664</b>	<b>3,829</b>	<b>5,858</b>	<b>3,926</b>	<b>2,132</b>	<b>18,518</b>	<b>11,590</b>	<b>5,961</b>	<b>32.19%</b>	<b>30.30%</b>	
Foca - Ustikolina	55	52	20	334	263	3	389	315	23	5.91%	5.91%	Dec-00
Gorazde	1,354	1,250	310	553	497	71	1,907	1,747	381	19.98%	19.76%	Dec-00

Source: Local Authorities / PLIP (Property Legislation Implementation Plan) Focal Points

## REVIEW OF IMPLEMENTATION OF THE PROPERTY LAWS IN FEDERATION

31 December 2000

MUNICIPALITIES / CANTONS	Socially Owned Property			Private Property			Total			Implement- ation	Previous Impl. Ratio	Last Update
	No of Claims	No of Decisions	Repossessor	No of Claims	No of Decisions	Repossessor	No of Claims	No of Decisions	Repossession			
Pale - Praca	32	32	0	12	12	10	44	44	10	22.73%	22.73%	Dec-00
<b>Total BOSNIA-PODRINJE:</b>	1,441	1,334	330	899	772	84	2,340	2,106	414	17.69%	17.44%	
Bugojno	1,060	552	361	2,222	1,688	1,488	3,282	2,240	1,849	56.34%	54.29%	Dec-00
Busovaca	102	102	99	628	499	414	730	601	513	70.27%	69.74%	Dec-00
Donji Vakuf	394	372	107	212	192	52	606	564	159	26.24%	26.27%	Dec-00
Fojnica	236	226	195	443	357	359	679	583	554	81.59%	80.44%	Dec-00
Gornji Vakuf	205	138	69	93	63	40	298	201	109	36.58%	36.61%	Dec-00
Jajce	1,582	539	334	397	215	199	1,979	754	533	26.93%	25.89%	Dec-00
Kiseljak	112	81	49	1,793	1,664	1,505	1,905	1,745	1,554	81.57%	79.68%	Dec-00
Kresevo	18	18	15	116	116	104	134	134	119	88.81%	88.06%	Dec-00
Novi Travnik	2,090	1,263	758	296	242	218	2,386	1,505	976	40.91%	38.72%	Dec-00
Travnik	1,467	731	630	949	890	901	2,416	1,621	1,531	63.37%	61.99%	Dec-00
Vitez	592	412	363	694	632	503	1,286	1,044	866	67.34%	65.11%	Dec-00
<b>Total CENTRAL BOSNIA:</b>	7,858	4,434	2,980	7,843	6,558	5,783	15,701	10,992	8,763	55.81%	54.29%	
Capljina	740	69	47	819	85	66	1,559	154	113	7.25%	7.25%	Oct-00
Citluk	5	5	5	3	3	3	8	8	8	100.00%	100.00%	
Jablanica	167	142	58	62	46	35	229	188	93	40.61%	40.17%	Dec-00
Konjic	824	699	440	605	325	159	1,429	1,024	599	41.92%	39.04%	Dec-00
Mostar Central Zone	466	36	17	77	5	5	543	41	22	4.05%	3.68%	Dec-00
Mostar North	77	33	33	690	184	338	767	217	371	48.37%	48.37%	May-00
Mostar Old Town	1,541	428	138	850	360	132	2,391	788	270	11.29%	10.13%	Dec-00
Mostar South	21	19	0	161	57	22	182	76	22	12.09%	12.09%	Nov-00
Mostar South-East	3	0	0	257	170	92	260	170	92	35.38%	36.21%	Dec-00
Mostar South-West	3,801	670	333	302	46	22	4,103	716	355	8.65%	7.81%	Dec-00
Mostar West	2,442	364	249	132	12	12	2,574	376	261	10.14%	6.45%	Dec-00
Neum	37	36	5	135	113	98	172	149	103	59.88%	59.88%	Oct-00
Prozor/Rama	210	145	125	165	177	162	375	322	287	76.53%	71.73%	Dec-00
Stolac	442	18	7	475	8	8	917	26	15	1.64%	1.64%	Jun-00
<b>Total HERZEGOVINA-NERET</b>	10,776	2,664	1,457	4,733	1,591	1,154	15,509	4,255	2,611	16.84%	15.41%	
Grude	1	1	1	0	0	0	1	1	1	100.00%	100.00%	
Ljubuski	69	59	35	220	164	90	289	223	125	43.25%	39.93%	Dec-00
Posusje	6	4	1	0	0	0	6	4	1	16.67%	16.67%	Oct-00
<b>Total WEST HERZEGOVINA:</b>	76	64	37	220	164	90	296	228	127	42.91%	39.66%	
Centar/Stari Grad	5,547	1,438	658	641	564	160	6,188	2,002	818	13.22%	19.62%	Dec-00
Ilidza/Hadzici	3,597	3,181	662	2,276	1,804	638	5,873	4,985	1,300	22.14%	20.73%	Dec-00
Novi Grad	9,928	7,710	2,273	1,177	900	439	11,105	8,610	2,712	24.42%	20.89%	Dec-00
Novo Sarajevo	8,815	5,787	1,761	818	786	383	9,633	6,573	2,144	22.26%	20.60%	Dec-00
Vogosca/Ilijas	2,202	1,743	326	1,473	1,122	521	3,675	2,865	847	23.05%	22.28%	Dec-00
<b>Total SARAJEVO:</b>	30,089	19,859	5,680	6,385	5,176	2,141	36,474	25,035	7,821	21.44%	20.72%	
Bosansko Grahovo	37	12	11	27	19	16	64	31	27	42.19%	42.19%	Dec-00
Drvar	1,811	169	8	1,101	260	153	2,912	429	161	5.53%	4.89%	Dec-00
Glamoc	423	16	11	426	33	28	849	49	39	4.59%	3.84%	Dec-00

Source: Local Authorities / PLIP (Property Legislation Implementation Plan) Focal Points

## REVIEW OF IMPLEMENTATION OF THE PROPERTY LAWS IN FEDERATION

31 December 2000

MUNICIPALITIES / CANTONS	Socially Owned Property			Private Property			Total			Implement- ation	Previous Impl. Ratio	Last Update
	No of Claims	No of Decisions	Repossession	No of Claims	No of Decisions	Repossession	No of Claims	No of Decisions	Repossession			
Kupres	195	7	6	103	25	25	298	32	31	10.40%	10.47%	Dec-00
Livno	330	168	129	217	97	165	547	265	294	53.75%	47.44%	Dec-00
Tomislavgrad	59	1	1	91	71	69	150	72	70	46.67%	46.67%	Nov-00
<b>Total HERZEG-BOSNIA:</b>	<b>2,855</b>	<b>373</b>	<b>166</b>	<b>1,965</b>	<b>505</b>	<b>456</b>	<b>4,820</b>	<b>878</b>	<b>622</b>	<b>12.90%</b>	<b>11.78%</b>	

<b>Total FEDERATION :</b>	<b>79,766</b>	<b>45,851</b>	<b>19,493</b>	<b>40,708</b>	<b>25,435</b>	<b>15,141</b>	<b>120,474</b>	<b>71,286</b>	<b>34,634</b>	<b>28.75%</b>	<b>27.40%</b>
%		<b>57%</b>	<b>24%</b>		<b>62%</b>	<b>37%</b>		<b>59%</b>	<b>29%</b>		

\* Implementation Ratio = Total number of repossessions / Total number of claims expressed in percentage form

**REVIEW OF IMPLEMENTATION OF THE PROPERTY LAWS IN REPUBLIKA SRPSKA**

31 December 2000

MUNICIPALITIES	Socially Owned Property			Private Property			Total			Implement- ation Ratio*	Previous Impl. Ratio	Last Update
	No of Claims	No of Decisions	Repossessor	No of Claims	No of Decisions	Repossessor	No of Claims	No of Decisions	Repossessor			
Banja Luka	9,222	1,392	662	6,636	1,453	696	15,858	2,845	1,358	8.56%	8.54%	Dec-00
B.Dubica/Kozarska Dubica	226	87	47	1,429	844	250	1,655	931	297	17.95%	17.10%	Dec-00
B.Gradiska/Gradiska	400	247	60	3,941	2,327	932	4,341	2,574	992	22.85%	21.72%	Dec-00
B.Novi/Novi Grad	460	232	140	2,913	1,562	428	3,373	1,794	568	16.84%	15.42%	Dec-00
B.Samac/Samac	421	115	84	1,929	376	357	2,350	491	441	18.77%	17.67%	Dec-00
Berkovici	2	1	0	2	2	0	4	3	0	0.00%	0.00%	Dec-00
Bijeljina	628	173	77	6,921	1,487	1,107	7,549	1,660	1,184	15.68%	14.26%	Dec-00
Bileca	131	117	29	206	157	50	337	274	79	23.44%	18.40%	Dec-00
Bosanska/Srpska Kostajnica	27	27	7	307	280	152	334	307	159	47.60%	47.13%	Dec-00
Bosanski/Srpski Brod	1,139	467	97	1,383	467	229	2,522	934	326	12.93%	12.74%	Dec-00
Bratunac	173	56	31	3,948	225	115	4,121	281	146	3.54%	2.93%	Dec-00
Cajnice	91	35	19	786	526	20	877	561	39	4.45%	6.54%	Dec-00
Celinac	58	49	24	283	253	94	341	302	118	34.60%	34.60%	Nov-00
Derventa	1,030	260	165	3,756	508	281	4,786	768	446	9.32%	8.68%	Dec-00
Doboj	2,767	853	590	5,962	1,149	772	8,729	2,002	1,362	15.60%	14.76%	Dec-00
Foca/Srbije	1,183	191	71	3,025	589	15	4,208	780	86	2.04%	1.75%	Dec-00
Gacko	266	160	85	472	182	20	738	342	105	14.23%	13.25%	Dec-00
Han Pijesak	56	21	9	160	104	13	216	125	22	10.19%	9.14%	Dec-00
Kalinovik	64	62	28	10	10	1	74	72	29	39.19%	39.19%	Nov-00
Kotor Varos	241	234	58	3,489	2,798	2,316	3,730	3,032	2,374	63.65%	63.65%	Nov-00
Laktasi	31	26	10	451	363	169	482	389	179	37.14%	37.14%	Nov-00
Ljubinje	12	11	5	50	42	4	62	53	9	14.52%	14.52%	Dec-00
Lopare	90	33	20	660	228	228	750	261	248	33.07%	30.35%	Dec-00
Milici	59	45	17	361	61	16	420	106	33	7.86%	7.65%	Dec-00
Modrica	540	505	146	2,976	2,201	210	3,516	2,706	356	10.13%	7.36%	Dec-00
Mrkonjic Grad	180	30	18	553	169	119	733	199	137	18.69%	18.69%	Nov-00
Nevesinje	33	25	16	628	499	148	661	524	164	24.81%	22.33%	Dec-00
Odzak/Vukosavlje	3	0	0	1,243	898	248	1,246	898	248	19.90%	19.90%	Aug-00
Osmaci	3	0	0	871	457	75	874	457	75	8.58%	7.68%	Dec-00
Pale	215	127	88	1,925	606	328	2,140	733	416	19.44%	17.85%	Dec-00
Pelagicevo	17	14	1	813	705	135	830	719	136	16.39%	10.37%	Dec-00
Petrovo	32	30	14	36	35	21	68	65	35	51.47%	49.25%	Dec-00
Prijedor	1,975	701	302	9,519	2,524	725	11,494	3,225	1,027	8.94%	8.12%	Dec-00
Prnjavor	155	61	26	1,915	459	297	2,070	520	323	15.60%	15.05%	Dec-00
Ribnik/Kljuc	25	20	18	1	1	1	26	21	19	73.08%	73.08%	Dec-00
Rogatica	421	249	78	1,591	323	55	2,012	572	133	6.61%	6.08%	Dec-00
Rudo	168	84	8	921	570	30	1,089	654	38	3.49%	3.50%	Dec-00
Sekovici	50	43	22	88	63	31	138	106	53	38.41%	34.06%	Dec-00
Sipovo	104	9	1	388	140	140	492	149	141	28.66%	18.38%	Dec-00
Skender Vakuf/Knezevo	71	8	2	257	169	74	328	177	76	23.17%	21.34%	Dec-00
Sokolac	78	16	60	703	545	28	781	561	88	11.27%	3.12%	Dec-00
Srbac	58	50	31	148	142	80	206	192	111	53.88%	52.91%	Dec-00
Srebrenica	534	175	68	3,733	414	25	4,267	589	93	2.18%	2.18%	Nov-00
Srpska Ilidza	1,060	306	110	595	103	44	1,655	409	154	9.31%	5.30%	Dec-00
Srpsko Gorazde	46	33	3	1,117	746	39	1,163	779	42	3.61%	3.47%	Dec-00
Srpsko Novo Sarajevo	8	1	1	273	235	94	281	236	95	33.81%	29.92%	Dec-00
Srpsko Orasje	1	1	1	16	16	16	17	17	17	100.00%	100.00%	

Source: Local Authorities / PLIP (Property Legislation Implementation Plan) Focal Points

## REVIEW OF IMPLEMENTATION OF THE PROPERTY LAWS IN REPUBLIKA SRPSKA

31 December 2000

MUNICIPALITIES	Socially Owned Property			Private Property			Total			Implement- ation Ratio*	Previous Impl. Ratio	Last Update
	No of Claims	No of Decisions	Repossession	No of Claims	No of Decisions	Repossession	No of Claims	No of Decisions	Repossession			
Teslic	741	221	119	3,182	1,050	355	3,923	1,271	474	12.08%	10.41%	Dec-00
Trebinje	773	263	120	835	198	86	1,608	461	206	12.81%	11.57%	Dec-00
Trnovo RS	87	76	18	141	108	76	228	184	94	41.23%	31.53%	Dec-00
Ugljevik	133	74	21	443	59	32	576	133	53	9.20%	8.19%	Dec-00
Visegrad	505	256	70	2,001	598	22	2,506	854	92	3.67%	3.30%	Dec-00
Vlasenica	347	143	86	1,221	349	174	1,568	492	260	16.58%	13.69%	Dec-00
Zvornik	1,433	224	123	5,008	190	80	6,441	414	203	3.15%	2.92%	Dec-00
<b>Total RS :</b>	<b>28,573</b>	<b>8,639</b>	<b>3,906</b>	<b>92,221</b>	<b>30,565</b>	<b>12,053</b>	<b>120,794</b>	<b>39,204</b>	<b>15,959</b>	<b>13.21%</b>	<b>12.31%</b>	
%		<b>30%</b>	<b>14%</b>		<b>33%</b>	<b>13%</b>		<b>32%</b>	<b>13%</b>			

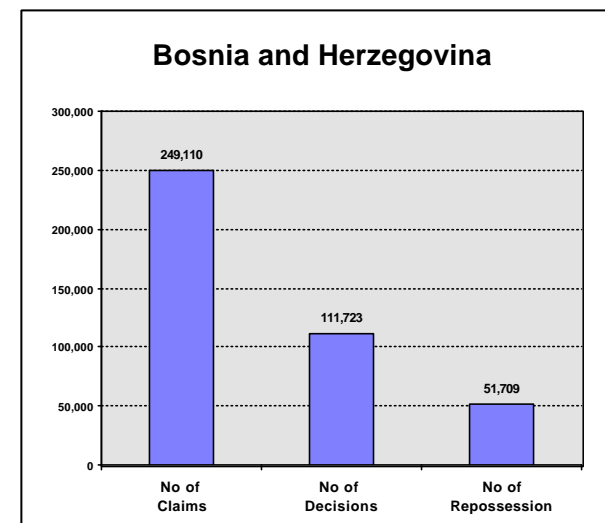
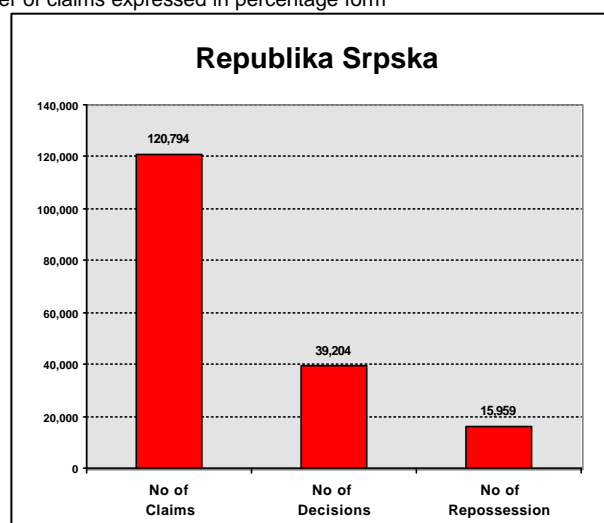
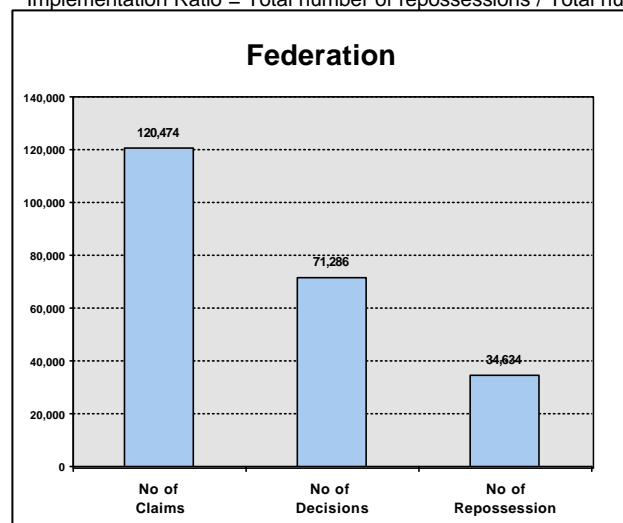
\* Implementation Ratio = Total number of repossessions / Total number of claims expressed in percentage form

## IMPLEMENTATION OF THE PROPERTY LAWS IN BOSNIA AND HERZEGOVINA - SUMMARY

31 December 2000

Bosnia and Herzegovina	Socially Owned Property			Private Property			Total			Implement-ation Ratio*	Previous Implement. Ratio
	No of Claims	No of Decisions	Repossession	No of Claims	No of Decisions	Repossession	No of Claims	No of Decisions	No of Repossession		
<b>Total FEDERATION :</b>	<b>79,766</b>	<b>45,851</b>	<b>19,493</b>	<b>40,708</b>	<b>25,435</b>	<b>15,141</b>	<b>120,474</b>	<b>71,286</b>	<b>34,634</b>	<b>29%</b>	<b>27%</b>
<b>%</b>		<b>57%</b>	<b>24%</b>		<b>62%</b>	<b>37%</b>		<b>59%</b>	<b>29%</b>		
<b>Total REPUBLIKA SRPSKA :</b>	<b>28,573</b>	<b>8,639</b>	<b>3,906</b>	<b>92,221</b>	<b>30,565</b>	<b>12,053</b>	<b>120,794</b>	<b>39,204</b>	<b>15,959</b>	<b>13%</b>	<b>12%</b>
<b>%</b>		<b>30%</b>	<b>14%</b>		<b>33%</b>	<b>13%</b>		<b>32%</b>	<b>13%</b>		
<b>BRCKO DISTRICT :</b>	<b>2,107</b>	<b>526</b>	<b>508</b>	<b>5,735</b>	<b>707</b>	<b>608</b>	<b>7,842</b>	<b>1,233</b>	<b>1,116</b>	<b>14%</b>	<b>14%</b>
<b>%</b>		<b>25%</b>	<b>24%</b>		<b>12%</b>	<b>11%</b>		<b>16%</b>	<b>14%</b>		
<b>GRAND TOTAL :</b>	<b>110,446</b>	<b>55,016</b>	<b>23,907</b>	<b>138,664</b>	<b>56,707</b>	<b>27,802</b>	<b>249,110</b>	<b>111,723</b>	<b>51,709</b>	<b>21%</b>	<b>20%</b>
<b>%</b>		<b>50%</b>	<b>22%</b>		<b>41%</b>	<b>20%</b>		<b>45%</b>	<b>21%</b>		

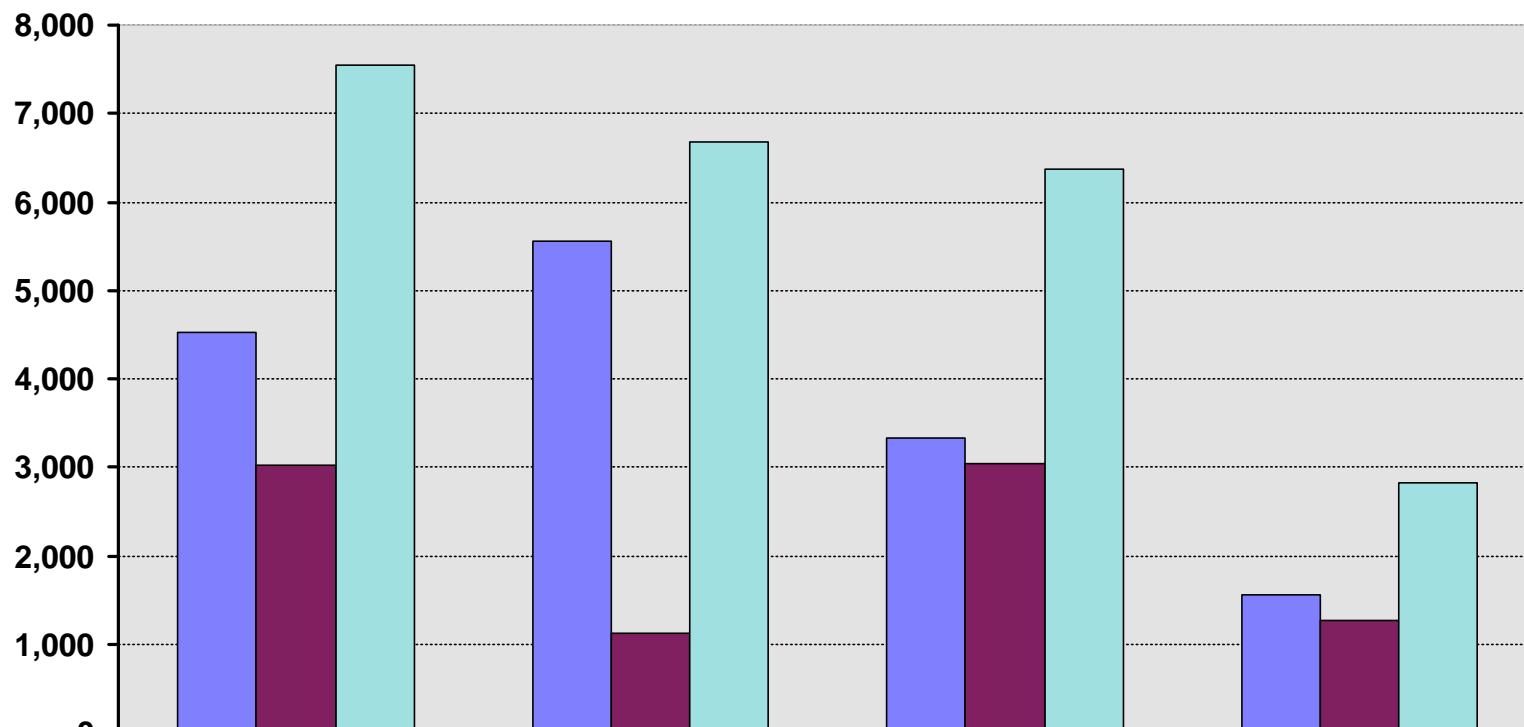
\* Implementation Ratio = Total number of repossessions / Total number of claims expressed in percentage form



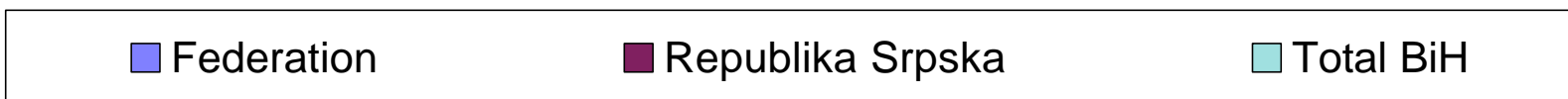
**N.B.** These statistics do not include information on decisions/repossessions on destroyed property, business premises or land.

**Source:** Local Authorities / PLIP (Property Legislation Implementation Plan) Focal Points

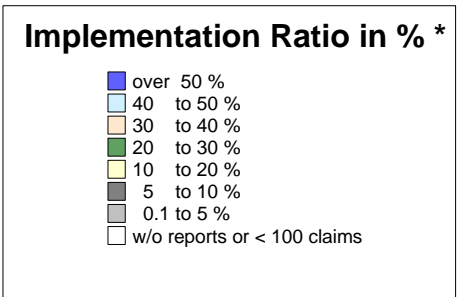
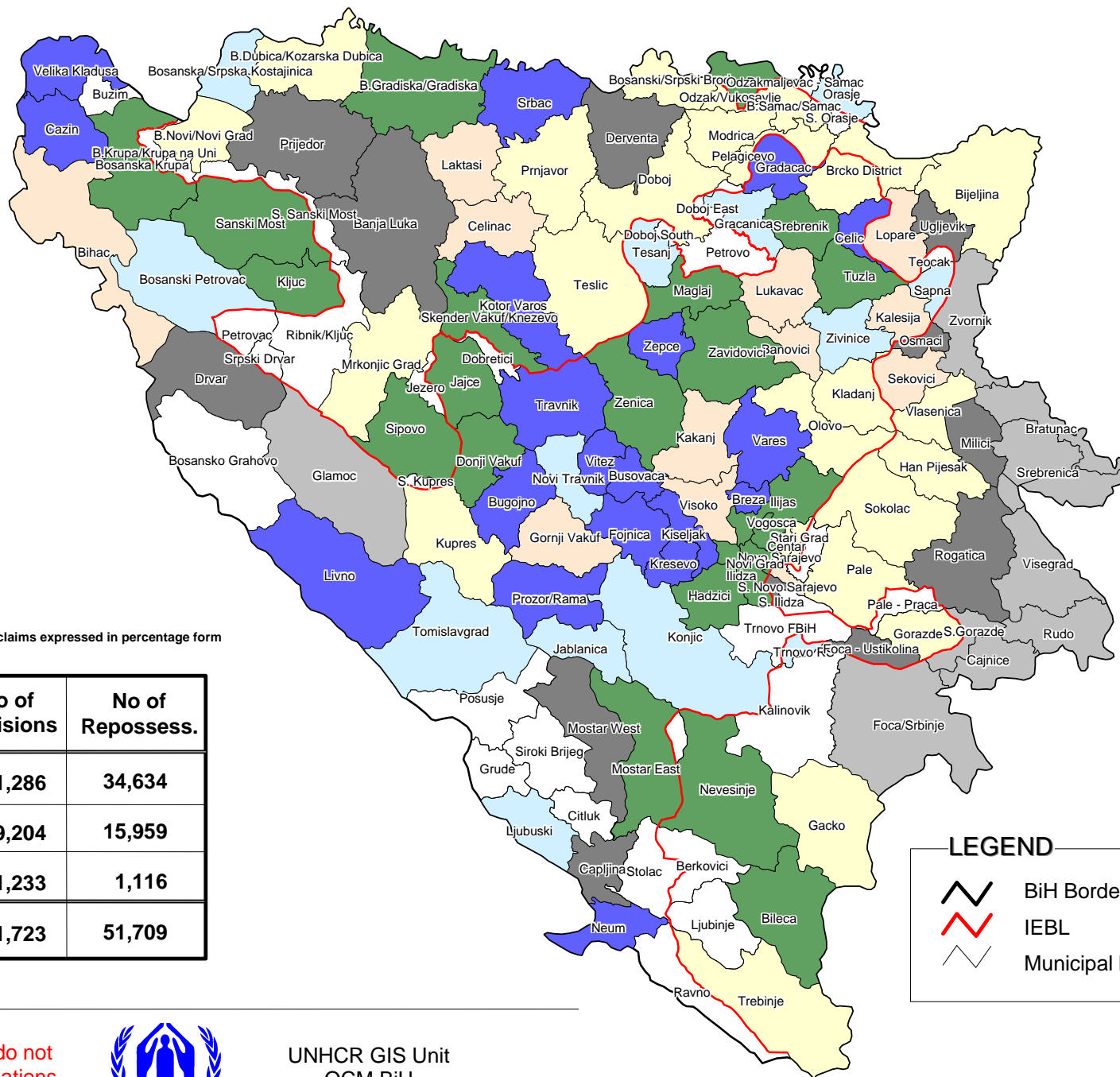
## Repossessions by month



	June/July	August/September	October/November	December
Federation	4,527	5,553	3,331	1,557
Republika Srpska	3,021	1,127	3,036	1,261
Total BiH	7,548	6,680	6,367	2,818

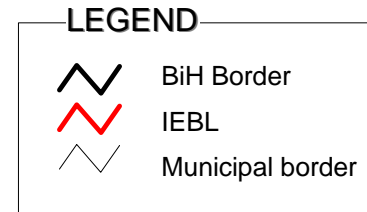






\* Implementation Ratio = Total number of repossessions / Total number of claims expressed in percentage form

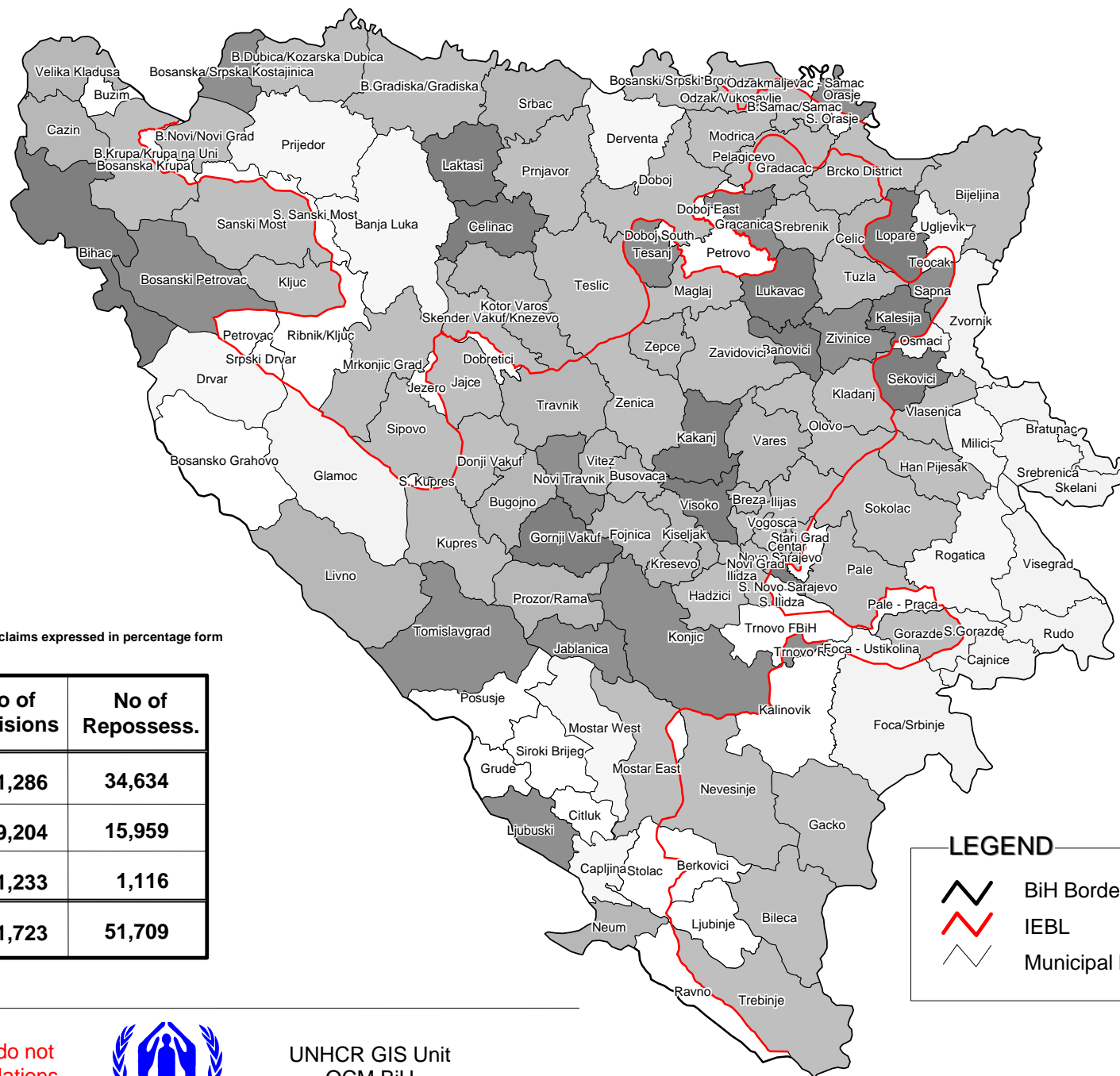
	No of Claims	No of Decisions	No of Repossess.
<b>Federation of BiH (FBiH)</b>	<b>120,474</b>	<b>71,286</b>	<b>34,634</b>
<b>Republika Srpska (RS)</b>	<b>120,794</b>	<b>39,204</b>	<b>15,959</b>
<b>Brcko District</b>	<b>7,842</b>	<b>1,233</b>	<b>1,116</b>
<b>Total BiH</b>	<b>249,110</b>	<b>111,723</b>	<b>51,709</b>



The boundaries displayed on this map do not imply official recognition by the United Nations



UNHCR GIS Unit  
OCM BiH



**Implementation Ratio in % \***

- over 50 %
- 40 to 50 %
- 30 to 40 %
- 20 to 30 %
- 10 to 20 %
- 5 to 10 %
- 0.1 to 5 %
- w/o reports or < 100 claims

\* Implementation Ratio = Total number of repossessions / Total number of claims expressed in percentage form

	No of Claims	No of Decisions	No of Repossess.
<b>Federation of BiH (FBiH)</b>	<b>120,474</b>	<b>71,286</b>	<b>34,634</b>
<b>Republika Srpska (RS)</b>	<b>120,794</b>	<b>39,204</b>	<b>15,959</b>
<b>Brcko District</b>	<b>7,842</b>	<b>1,233</b>	<b>1,116</b>
<b>Total BiH</b>	<b>249,110</b>	<b>111,723</b>	<b>51,709</b>

**LEGEND**

- BiH Border
- IEBL
- Municipal border

The boundaries displayed on this map do not imply official recognition by the United Nations



UNHCR GIS Unit  
OCM BiH