



UNHCR



# **STATISTICS**

## **IMPLEMENTATION OF THE PROPERTY LAWS**

30 November 2000

## REVIEW OF IMPLEMENTATION OF THE PROPERTY LAWS IN FEDERATION

30 November 2000

MUNICIPALITIES / CANTONS	Socially Owned Property			Private Property			Total			Efficiency	Previous Eff. Ratio	Last Update
	No of Claims	No of Decisions	Repossession	No of Claims	No of Decisions	Repossession	No of Claims	No of Decisions	Repossession			
Bihac	1,620	1,340	624	716	562	248	2,336	1,902	872	37.33%	35.61%	Nov-00
Bosanska Krupa	470	445	174	652	374	148	1,122	819	322	28.70%	27.97%	Nov-00
Bosanski Petrovac	457	345	181	900	652	420	1,357	997	601	44.29%	43.37%	Nov-00
Buzim	7	7	1	1	1	1	8	8	2	25.00%	25.00%	May-00
Cazin	106	106	75	60	42	33	166	148	108	65.06%	63.19%	Nov-00
Kljuc	847	640	210	645	547	141	1,492	1,187	351	23.53%	22.44%	Nov-00
Sanski Most	977	643	246	3,580	1,063	750	4,557	1,706	996	21.86%	20.79%	Nov-00
Velika Kladusa	430	426	304	47	34	34	477	460	338	70.86%	66.67%	Nov-00
<b>Total UNA-SANA:</b>	<b>4,914</b>	<b>3,952</b>	<b>1,815</b>	<b>6,601</b>	<b>3,275</b>	<b>1,775</b>	<b>11,515</b>	<b>7,227</b>	<b>3,590</b>	<b>31.18%</b>	<b>29.90%</b>	
Domaljevac	8	8	1	4	4	1	12	12	2	16.67%	16.67%	Nov-00
Odzak	322	222	152	314	47	18	636	269	170	26.73%	25.96%	Nov-00
Orasje	167	129	104	231	144	66	398	273	170	42.71%	40.77%	Nov-00
<b>Total POSAVINA:</b>	<b>497</b>	<b>359</b>	<b>257</b>	<b>549</b>	<b>195</b>	<b>85</b>	<b>1,046</b>	<b>554</b>	<b>342</b>	<b>32.70%</b>	<b>31.46%</b>	
Banovici	1,020	942	283	96	93	26	1,116	1,035	309	27.69%	26.12%	Nov-00
Celic	39	39	16	133	123	108	172	162	124	72.09%	73.01%	Nov-00
Doboj East	3	0	0	6	6	5	9	6	5	55.56%	55.56%	Nov-00
Gracanica	246	215	134	432	341	148	678	556	282	41.59%	39.34%	Nov-00
Gradacac	272	270	222	339	304	103	611	574	325	53.19%	50.74%	Nov-00
Kalesija	144	140	105	628	243	141	772	383	246	31.87%	30.28%	Nov-00
Kladanj	166	100	58	200	154	2	366	254	60	16.39%	15.24%	Nov-00
Lukavac	807	606	496	921	522	55	1,728	1,128	551	31.89%	31.79%	Nov-00
Sapna	22	22	14	99	85	35	121	107	49	40.50%	43.24%	Nov-00
Srebrenik	78	77	46	453	175	85	531	252	131	24.67%	26.57%	Nov-00
Teocak	8	4	1	7	2	0	15	6	1	6.67%	7.14%	Nov-00
Tuzla	5,487	2,278	1,056	1,426	632	427	6,913	2,910	1,483	21.45%	20.14%	Nov-00
Zivinice	308	169	165	397	178	114	705	347	279	39.57%	36.98%	Nov-00
<b>Total TUZLA:</b>	<b>8,600</b>	<b>4,862</b>	<b>2,596</b>	<b>5,137</b>	<b>2,858</b>	<b>1,249</b>	<b>13,737</b>	<b>7,720</b>	<b>3,845</b>	<b>27.99%</b>	<b>26.78%</b>	
Breza	227	209	138	141	134	67	368	343	205	55.71%	52.34%	Nov-00
Doboj South	0	0	0	15	12	11	15	12	11	73.33%	73.33%	Nov-00
Kakanj	1,028	484	339	428	208	183	1,456	692	522	35.85%	33.54%	Nov-00
Maglaj	665	489	327	1,314	804	188	1,979	1,293	515	26.02%	21.60%	Nov-00
Olovo	272	179	37	169	100	17	441	279	54	12.24%	5.92%	Nov-00
Tesanj	157	126	81	363	307	144	520	433	225	43.27%	40.04%	Nov-00
Usora	3	3	3	5	5	4	8	8	7	87.50%	87.50%	Oct-00
Vares	1,395	1,221	702	74	57	40	1,469	1,278	742	50.51%	49.08%	Nov-00
Visoko	328	228	108	524	320	137	852	548	245	28.76%	29.98%	Nov-00
Zavidovici	1,330	676	302	885	165	124	2,215	841	426	19.23%	17.78%	Nov-00
Zenica	6,960	3,554	1,295	822	652	284	7,782	4,206	1,579	20.29%	18.15%	Nov-00
Zepce	305	272	250	1,002	958	797	1,307	1,230	1,047	80.11%	78.05%	Nov-00
<b>Total ZENICA-DOBOJ:</b>	<b>12,670</b>	<b>7,441</b>	<b>3,582</b>	<b>5,742</b>	<b>3,722</b>	<b>1,996</b>	<b>18,412</b>	<b>11,163</b>	<b>5,578</b>	<b>30.30%</b>	<b>28.07%</b>	
Foca	55	52	20	334	263	3	389	315	23	5.91%	5.91%	Oct-00
Gorazde	1,354	1,233	296	483	455	67	1,837	1,688	363	19.76%	17.78%	Nov-00

## REVIEW OF IMPLEMENTATION OF THE PROPERTY LAWS IN FEDERATION

30 November 2000

MUNICIPALITIES / CANTONS	Socially Owned Property			Private Property			Total			Efficiency	Previous Eff. Ratio	Last Update
	No of Claims	No of Decisions	Repossession	No of Claims	No of Decisions	Repossession	No of Claims	No of Decisions	Repossession			
Pale	32	32	0	12	12	10	44	44	10	22.73%	22.73%	Nov-00
<b>Total BOSNIA-PODRINJE:</b>	1,441	1,317	316	829	730	80	2,270	2,047	396	17.44%	15.79%	
Bugojno	1,060	523	341	2,217	1,636	1,438	3,277	2,159	1,779	54.29%	52.77%	Nov-00
Busovaca	102	102	99	625	496	408	727	598	507	69.74%	66.34%	Nov-00
Donji Vakuf	394	367	104	196	181	51	590	548	155	26.27%	24.39%	Nov-00
Fojnica	238	221	193	442	354	354	680	575	547	80.44%	77.03%	Nov-00
Gornji Vakuf	161	106	56	93	63	37	254	169	93	36.61%	35.46%	Nov-00
Jajce	1,582	528	317	388	204	193	1,970	732	510	25.89%	23.88%	Nov-00
Kiseljak	112	78	48	1,788	1,631	1,466	1,900	1,709	1,514	79.68%	75.38%	Nov-00
Kresevo	18	18	14	116	116	104	134	134	118	88.06%	86.57%	Nov-00
Novi Travnik	2,090	1,234	712	294	239	211	2,384	1,473	923	38.72%	45.59%	Nov-00
Travnik	1,467	696	619	935	878	870	2,402	1,574	1,489	61.99%	60.06%	Nov-00
Vitez	592	390	343	692	627	493	1,284	1,017	836	65.11%	61.12%	Nov-00
<b>Total CENTRAL BOSNIA:</b>	7,816	4,263	2,846	7,786	6,425	5,625	15,602	10,688	8,471	54.29%	53.03%	
Capljina	740	69	47	819	85	66	1,559	154	113	7.25%	7.25%	Oct-00
Citluk	5	5	5	3	3	3	8	8	8	100.00%	100.00%	
Jablanica	167	142	57	62	46	35	229	188	92	40.17%	36.56%	Nov-00
Konjic	824	714	407	595	310	147	1,419	1,024	554	39.04%	36.68%	Nov-00
Mostar Central Zone	468	36	16	76	5	4	544	41	20	3.68%	2.97%	Nov-00
Mostar North	77	33	33	690	184	338	767	217	371	48.37%	48.37%	May-00
Mostar Old Town	1,541	395	121	819	331	118	2,360	726	239	10.13%	8.18%	Nov-00
Mostar South	21	19	0	161	57	22	182	76	22	12.09%	11.24%	Nov-00
Mostar South-East	3	0	0	240	166	88	243	166	88	36.21%	36.21%	Oct-00
Mostar South-West	3,801	579	298	298	43	22	4,099	622	320	7.81%	3.65%	Nov-00
Mostar West	2,442	219	157	132	9	9	2,574	228	166	6.45%	6.45%	Oct-00
Neum	37	36	5	135	113	98	172	149	103	59.88%	59.88%	Oct-00
Prozor/Rama	210	141	114	165	173	155	375	314	269	71.73%	65.24%	Nov-00
Stolac	442	18	7	475	8	8	917	26	15	1.64%	1.64%	Jun-00
<b>Total HERZEGOVINA-NERET</b>	10,778	2,406	1,267	4,670	1,533	1,113	15,448	3,939	2,380	15.41%	13.65%	
Grude	1	1	1	0	0	0	1	1	1	100.00%	100.00%	
Ljubuski	69	59	33	219	153	82	288	212	115	39.93%	34.51%	Nov-00
Posusje	6	4	1	0	0	0	6	4	1	16.67%	16.67%	Oct-00
<b>Total WEST HERZEGOVINA:</b>	76	64	35	219	153	82	295	217	117	39.66%	34.36%	
Centar/Stari Grad	5,537	3,739	1,060	630	542	150	6,167	4,281	1,210	19.62%	13.12%	Nov-00
Ilidza/Hadzici	3,594	2,873	597	2,238	1,754	612	5,832	4,627	1,209	20.73%	17.80%	Nov-00
Novi Grad	11,123	7,335	2,156	1,126	863	403	12,249	8,198	2,559	20.89%	20.71%	Nov-00
Novo Sarajevo	8,993	5,557	1,652	807	714	367	9,800	6,271	2,019	20.60%	17.75%	Nov-00
Vogosca/Ilijas	2,200	1,565	300	1,399	1,102	502	3,599	2,667	802	22.28%	19.77%	Nov-00
<b>Total SARAJEVO:</b>	31,447	21,069	5,765	6,200	4,975	2,034	37,647	26,044	7,799	20.72%	17.95%	
Bosansko Grahovo	37	12	11	27	19	16	64	31	27	42.19%	39.06%	Nov-00
Drvar	1,811	167	6	1,072	242	135	2,883	409	141	4.89%	3.18%	Nov-00
Glamoc	389	16	7	419	29	24	808	45	31	3.84%	3.38%	Nov-00

Source: Local Authorities / PLIP (Property Legislation Implementation Plan) Focal Points

## REVIEW OF IMPLEMENTATION OF THE PROPERTY LAWS IN FEDERATION

30 November 2000

MUNICIPALITIES / CANTONS	Socially Owned Property			Private Property			Total			Efficiency	Previous Eff. Ratio	Last Update
	No of Claims	No of Decisions	Repossession	No of Claims	No of Decisions	Repossession	No of Claims	No of Decisions	Repossession			
Kupres	195	7	6	101	25	25	296	32	31	10.47%	9.12%	Nov-00
Livno	330	153	97	216	89	162	546	242	259	47.44%	47.42%	Nov-00
Tomislavgrad	59	1	1	91	71	69	150	72	70	46.67%	45.33%	Nov-00
<b>Total HERZEG-BOSNIA:</b>	<b>2,821</b>	<b>356</b>	<b>128</b>	<b>1,926</b>	<b>475</b>	<b>431</b>	<b>4,747</b>	<b>831</b>	<b>559</b>	<b>11.78%</b>	<b>10.51%</b>	
<b>Total FEDERATION :</b>	<b>81,060</b>	<b>46,089</b>	<b>18,607</b>	<b>39,659</b>	<b>24,341</b>	<b>14,470</b>	<b>120,719</b>	<b>70,430</b>	<b>33,077</b>	<b>27.40%</b>	<b>25.48%</b>	
%		<b>57%</b>	<b>23%</b>		<b>61%</b>	<b>36%</b>		<b>58%</b>	<b>27%</b>			

\* Efficiency Ratio = Total number of repossessions / Total number of claims

**REVIEW OF IMPLEMENTATION OF THE PROPERTY LAWS IN REPUBLIKA SRPSKA**

30 November 2000

MUNICIPALITIES	Socially Owned Property			Private Property			Total			Efficiency Ratio*	Previous Eff. Ratio	Last Update
	No of Claims	No of Decisions	Repossessor	No of Claims	No of Decisions	Repossessor	No of Claims	No of Decisions	Repossessor			
Banja Luka	9,222	1,218	654	6,537	1,353	692	15,759	2,571	1,346	8.54%	7.61%	Nov-00
Berkovici	2	1	0	1	1	0	3	2	0	0.00%	0.00%	Nov-00
Bijeljina	628	152	67	6,848	1,313	999	7,476	1,465	1,066	14.26%	12.69%	Nov-00
Bileca	130	110	20	196	150	40	326	260	60	18.40%	15.53%	Nov-00
Bratunac	172	53	30	3,927	161	90	4,099	214	120	2.93%	1.91%	Nov-00
Cajnice	91	34	18	780	473	39	871	507	57	6.54%	6.42%	Nov-00
Celinac	58	49	24	283	253	94	341	302	118	34.60%	33.53%	Nov-00
Derвента	1,027	230	150	3,721	474	262	4,748	704	412	8.68%	8.00%	Nov-00
Doboj	2,766	783	537	5,913	1,090	744	8,679	1,873	1,281	14.76%	7.23%	Nov-00
Gacko	266	146	76	466	176	21	732	322	97	13.25%	11.88%	Nov-00
Gradiska	400	241	52	3,910	2,259	884	4,310	2,500	936	21.72%	20.88%	Nov-00
Han Pijesak	56	15	8	141	85	10	197	100	18	9.14%	7.37%	Nov-00
Kalinovik	64	62	28	10	10	1	74	72	29	39.19%	35.53%	Nov-00
Knezevo	71	6	2	257	162	68	328	168	70	21.34%	19.82%	Nov-00
Kostajnica	27	27	7	304	271	149	331	298	156	47.13%	44.82%	Nov-00
Kotor Varos	241	234	58	3,489	2,798	2,316	3,730	3,032	2,374	63.65%	59.75%	Nov-00
Kozarska Dubica	225	82	44	1,424	830	238	1,649	912	282	17.10%	15.64%	Nov-00
Laktasi	31	26	10	451	363	169	482	389	179	37.14%	30.87%	Nov-00
Ljubinje	12	11	5	50	41	4	62	52	9	14.52%	13.11%	Nov-00
Lopare	90	30	19	658	208	208	748	238	227	30.35%	29.09%	Nov-00
Milici	59	41	15	346	41	16	405	82	31	7.65%	7.89%	Nov-00
Modrica	540	533	126	2,926	2,042	129	3,466	2,575	255	7.36%	7.36%	Oct-00
Mrkonjic Grad	180	30	18	553	169	119	733	199	137	18.69%	15.09%	Nov-00
Nevesinje	33	24	15	612	468	129	645	492	144	22.33%	19.62%	Nov-00
Novi Grad	451	212	127	2,902	1,532	390	3,353	1,744	517	15.42%	13.90%	Nov-00
Osmaci	3	0	0	869	422	67	872	422	67	7.68%	6.21%	Nov-00
Pale	215	125	86	1,891	543	290	2,106	668	376	17.85%	15.72%	Nov-00
Pelagicevo	17	14	1	803	677	84	820	691	85	10.37%	2.35%	Nov-00
Petrovo	32	30	13	35	32	20	67	62	33	49.25%	49.25%	Nov-00
Prijedor	1,975	656	273	9,457	2,394	655	11,432	3,050	928	8.12%	7.06%	Nov-00
Prnjavor	155	57	23	1,905	429	287	2,060	486	310	15.05%	13.41%	Nov-00
Ribnik	25	20	18	1	1	1	26	21	19	73.08%	73.08%	Nov-00
Rogatica	421	208	72	1,552	248	48	1,973	456	120	6.08%	5.51%	Nov-00
Rudo	168	82	8	917	545	30	1,085	627	38	3.50%	2.41%	Nov-00
Samac	421	95	75	1,928	368	340	2,349	463	415	17.67%	17.90%	Nov-00
Sekovici	50	41	16	88	59	31	138	100	47	34.06%	29.41%	Nov-00
Sipovo	104	11	1	364	148	85	468	159	86	18.38%	18.38%	Jul-00
Sokolac	78	15	4	692	483	20	770	498	24	3.12%	2.77%	Nov-00
Srbac	58	46	31	148	142	78	206	188	109	52.91%	52.45%	Nov-00
Srbinje	1,180	165	59	2,999	531	14	4,179	696	73	1.75%	1.47%	Nov-00
Srebrenica	534	175	68	3,733	414	25	4,267	589	93	2.18%	1.90%	Nov-00
Srpska Ilidza	877	161	61	538	74	14	1,415	235	75	5.30%	5.41%	Nov-00
Srpski Brod	1,139	420	90	1,334	434	225	2,473	854	315	12.74%	12.48%	Nov-00
Srpsko Gorazde	46	27	2	905	689	31	951	716	33	3.47%	3.51%	Nov-00
Srpsko Novo Sarajevo	8	1	1	246	155	75	254	156	76	29.92%	29.92%	Sep-00
Srpsko Orasje	1	1	1	16	16	16	17	17	17	100.00%	100.00%	
Trnovo	87	73	18	135	95	52	222	168	70	31.53%	30.41%	Nov-00

Source: Local Authorities / PLIP (Property Legislation Implementation Plan) Focal Points

## REVIEW OF IMPLEMENTATION OF THE PROPERTY LAWS IN REPUBLIKA SRPSKA

30 November 2000

MUNICIPALITIES	Socially Owned Property			Private Property			Total			Efficiency Ratio*	Previous Eff. Ratio	Last Update
	No of Claims	No of Decisions	Repossession	No of Claims	No of Decisions	Repossession	No of Claims	No of Decisions	Repossession			
Teslic	741	192	102	3,169	996	305	3,910	1,188	407	10.41%	8.51%	Nov-00
Trebinje	769	237	113	822	177	71	1,591	414	184	11.57%	10.76%	Nov-00
Ugljevik	133	54	17	441	53	30	574	107	47	8.19%	5.78%	Nov-00
Visegrad	504	238	61	1,952	544	20	2,456	782	81	3.30%	2.85%	Nov-00
Vlasenica	347	121	69	1,216	315	145	1,563	436	214	13.69%	12.50%	Nov-00
Vukosavlje	3	0	0	1,243	898	248	1,246	898	248	19.90%	19.90%	Aug-00
Zvornik	1,433	215	118	4,962	169	69	6,395	384	187	2.92%	2.57%	Nov-00
<b>Total RS :</b>	<b>28,366</b>	<b>7,830</b>	<b>3,511</b>	<b>91,066</b>	<b>28,774</b>	<b>11,187</b>	<b>119,432</b>	<b>36,604</b>	<b>14,698</b>	<b>12.31%</b>	<b>10.76%</b>	
%		<b>28%</b>	<b>12%</b>		<b>32%</b>	<b>12%</b>		<b>31%</b>	<b>12%</b>			

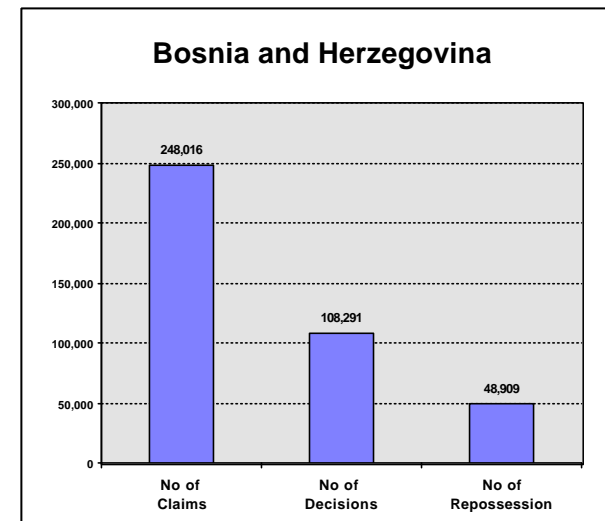
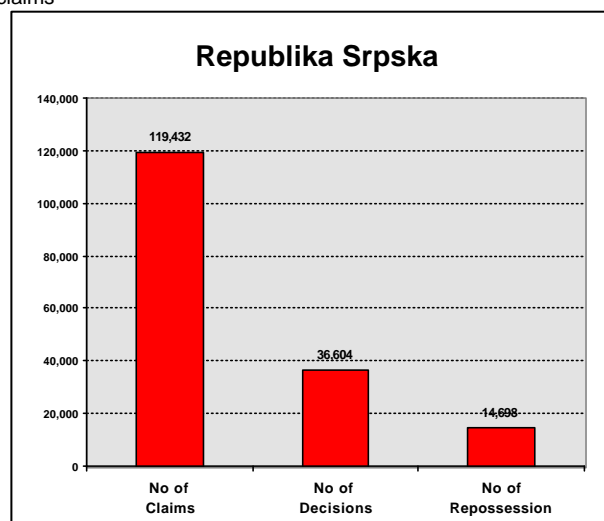
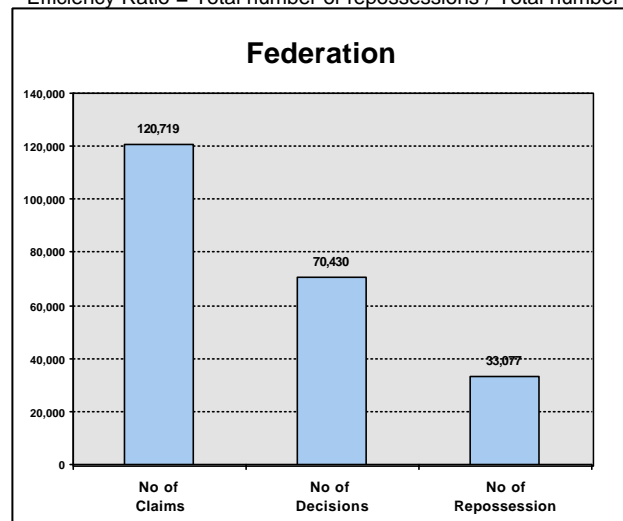
\* Efficiency Ratio = Total number of repossessions / Total number of claims

## IMPLEMENTATION OF THE PROPERTY LAWS IN BOSNIA AND HERZEGOVINA - SUMMARY

30 November 2000

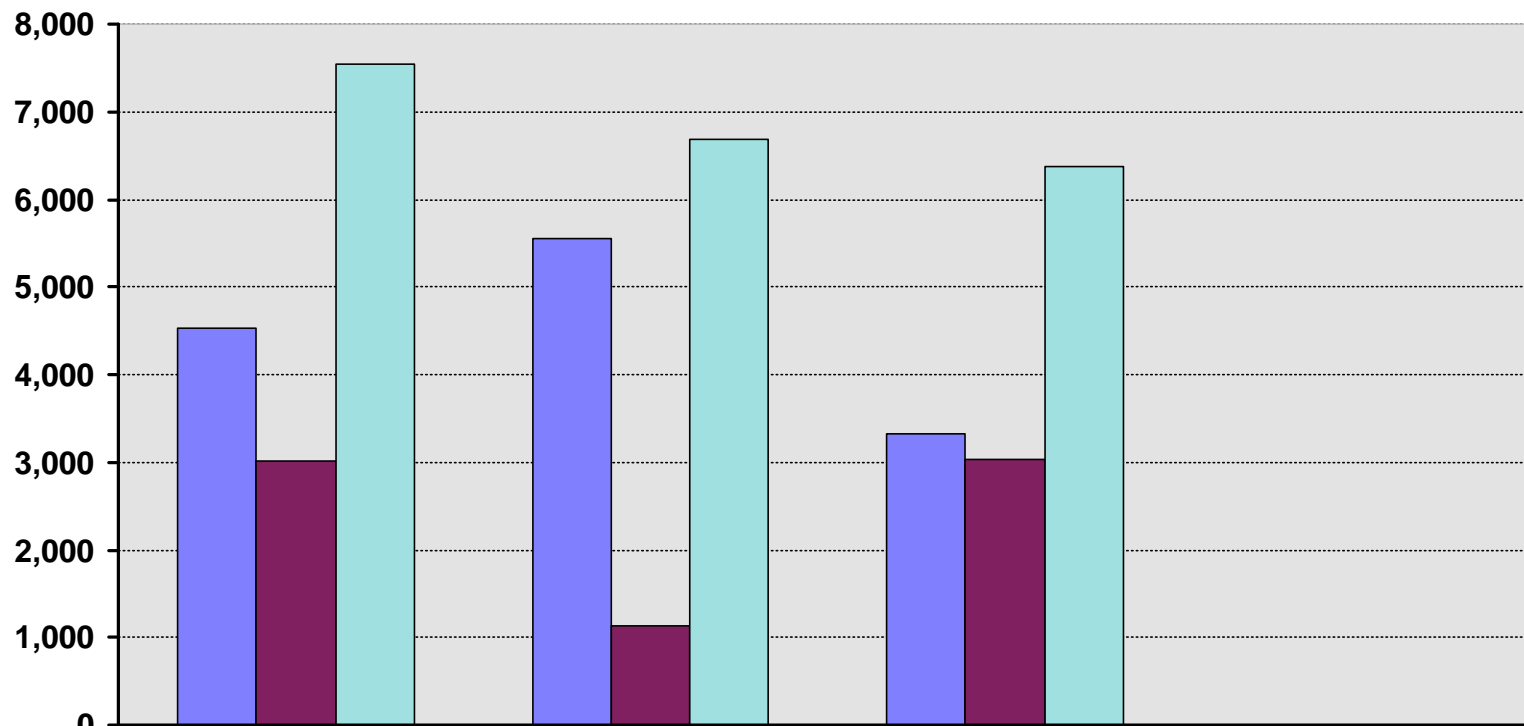
Bosnia and Herzegovina	Socially Owned Property			Private Property			Total			Efficiency Ratio *	Previous Efficiency Ratio
	No of Claims	No of Decisions	Repossession	No of Claims	No of Decisions	Repossession	No of Claims	No of Decisions	No of Repossession		
<b>Total FEDERATION :</b>	<b>81,060</b>	<b>46,089</b>	<b>18,607</b>	<b>39,659</b>	<b>24,341</b>	<b>14,470</b>	<b>120,719</b>	<b>70,430</b>	<b>33,077</b>	<b>27%</b>	<b>25%</b>
<b>%</b>		<b>57%</b>	<b>23%</b>		<b>61%</b>	<b>36%</b>		<b>58%</b>	<b>27%</b>		
<b>Total REPUBLIKA SRPSKA :</b>	<b>28,366</b>	<b>7,830</b>	<b>3,511</b>	<b>91,066</b>	<b>28,774</b>	<b>11,187</b>	<b>119,432</b>	<b>36,604</b>	<b>14,698</b>	<b>12%</b>	<b>11%</b>
<b>%</b>		<b>28%</b>	<b>12%</b>		<b>32%</b>	<b>12%</b>		<b>31%</b>	<b>12%</b>		
<b>District BRCKO :</b>	<b>2,091</b>	<b>480</b>	<b>460</b>	<b>5,774</b>	<b>777</b>	<b>674</b>	<b>7,865</b>	<b>1,257</b>	<b>1,134</b>	<b>14%</b>	<b>25%</b>
<b>%</b>		<b>23%</b>	<b>22%</b>		<b>13%</b>	<b>12%</b>		<b>16%</b>	<b>14%</b>		
<b>GRAND TOTAL :</b>	<b>111,517</b>	<b>54,399</b>	<b>22,578</b>	<b>136,499</b>	<b>53,892</b>	<b>26,331</b>	<b>248,016</b>	<b>108,291</b>	<b>48,909</b>	<b>20%</b>	<b>19%</b>
<b>%</b>		<b>49%</b>	<b>20%</b>		<b>39%</b>	<b>19%</b>		<b>44%</b>	<b>20%</b>		

\* Efficiency Ratio = Total number of repossessions / Total number of claims



**N.B.** These statistics do not include information on decisions/repossessions on destroyed property, business premises or land.

## Repossessions by month



	June/July	August/September	October/November	December
Federation	4,527	5,553	3,331	
Republika Srpska	3,021	1,127	3,036	
Total BiH	7,548	6,680	6,367	

