



UNHCR



STATISTICS

IMPLEMENTATION OF THE PROPERTY LAWS

31 October 2000

REVIEW OF IMPLEMENTATION OF THE PROPERTY LAWS IN FEDERATION

31 October 2000

MUNICIPALITIES / CANTONS	Socially Owned Property			Private Property			Total			Efficiency	Previous Eff. Ratio	Last Update
	No of Claims	No of Decisions	Repossession	No of Claims	No of Decisions	Repossession	No of Claims	No of Decisions	Repossession			
Bihac	1,620	1,300	590	697	472	235	2,317	1,772	825	35.61%	32.55%	Oct-00
Bosanska Krupa	470	445	162	599	329	137	1,069	774	299	27.97%	41.01%	Oct-00
Bosanski Petrovac	457	334	172	885	619	410	1,342	953	582	43.37%	66.88%	Oct-00
Buzim	7	7	1	1	1	1	8	8	2	25.00%	25.00%	May-00
Cazin	106	106	73	57	42	30	163	148	103	63.19%	58.13%	Oct-00
Kljuc	847	634	201	610	520	126	1,457	1,154	327	22.44%	21.86%	Oct-00
Sanski Most	977	600	236	3,506	994	696	4,483	1,594	932	20.79%	19.53%	Oct-00
Velika Kladusa	418	406	288	47	39	22	465	445	310	66.67%	66.45%	Oct-00
Total UNA-SANA:	4,902	3,832	1,723	6,402	3,016	1,657	11,304	6,848	3,380	29.90%	35.34%	
Domaljevac	8	8	1	4	2	1	12	10	2	16.67%	16.67%	Oct-00
Odzak	322	220	147	306	41	16	628	261	163	25.96%	25.40%	Oct-00
Orasje	167	126	99	223	135	60	390	261	159	40.77%	38.56%	Oct-00
Total POSAVINA:	497	354	247	533	178	77	1,030	532	324	31.46%	30.20%	
Banovici	1,020	930	265	94	91	26	1,114	1,021	291	26.12%	23.11%	Oct-00
Celic	39	39	14	124	105	105	163	144	119	73.01%	70.19%	Oct-00
Doboj East	3	0	0	6	6	5	9	6	5	55.56%	55.56%	Oct-00
Gracanica	246	206	130	425	313	134	671	519	264	39.34%	34.98%	Oct-00
Gradacac	272	270	218	335	298	90	607	568	308	50.74%	50.58%	Oct-00
Kalesija	144	140	98	609	225	130	753	365	228	30.28%	25.61%	Oct-00
Kladanj	165	95	53	196	151	2	361	246	55	15.24%	11.58%	Oct-00
Lukavac	798	578	476	860	485	51	1,658	1,063	527	31.79%	29.97%	Oct-00
Sapna	22	22	14	89	71	34	111	93	48	43.24%	47.47%	Oct-00
Srebrenik	78	77	43	400	165	84	478	242	127	26.57%	29.78%	Oct-00
Teocak	8	4	1	6	2	0	14	6	1	7.14%	7.14%	Oct-00
Tuzla	5,483	2,134	966	1,345	588	409	6,828	2,722	1,375	20.14%	18.33%	Oct-00
Zivinice	308	164	150	387	167	107	695	331	257	36.98%	31.30%	Oct-00
Total TUZLA:	8,586	4,659	2,428	4,876	2,667	1,177	13,462	7,326	3,605	26.78%	24.55%	
Breza	227	201	129	136	129	61	363	330	190	52.34%	47.77%	Oct-00
Doboj South	0	0	0	15	11	11	15	11	11	73.33%	73.33%	Sep-00
Kakanj	1,028	457	309	427	204	179	1,455	661	488	33.54%	30.73%	Oct-00
Maglaj	655	480	304	1,289	239	116	1,944	719	420	21.60%	20.98%	Oct-00
Olovo	282	164	21	157	97	5	439	261	26	5.92%	4.93%	Oct-00
Tesanj	157	120	71	355	291	134	512	411	205	40.04%	36.58%	Oct-00
Usora	3	3	3	5	5	4	8	8	7	87.50%	87.50%	Oct-00
Vares	1,395	1,207	683	74	56	38	1,469	1,263	721	49.08%	48.09%	Oct-00
Visoko	328	214	115	496	267	132	824	481	247	29.98%	26.33%	Oct-00
Zavidovici	1,330	641	271	858	154	118	2,188	795	389	17.78%	16.48%	Oct-00
Zenica	6,960	3,508	1,157	791	625	250	7,751	4,133	1,407	18.15%	15.65%	Oct-00
Zepce	305	260	240	998	946	777	1,303	1,206	1,017	78.05%	73.52%	Oct-00
Total ZENICA-DOBOJ:	12,670	7,255	3,303	5,601	3,024	1,825	18,271	10,279	5,128	28.07%	25.81%	
Foca	55	52	20	334	263	3	389	315	23	5.91%	5.15%	Oct-00
Gorazde	1,354	1,230	258	423	414	58	1,777	1,644	316	17.78%	16.08%	Oct-00
Pale	32	32	0	12	12	10	44	44	10	22.73%	22.73%	Oct-00
Total BOSNIA-PODRINJE:	1,441	1,314	278	769	689	71	2,210	2,003	349	15.79%	14.28%	
Bugojno	1,060	499	312	2,203	1,588	1,410	3,263	2,087	1,722	52.77%	51.33%	Oct-00
Busovaca	102	102	99	620	471	380	722	573	479	66.34%	64.65%	Oct-00
Donji Vakuf	394	367	98	184	166	43	578	533	141	24.39%	21.21%	Oct-00

Source: Local Authorities / PLIP (Property Legislation Implementation Plan) Focal Points

REVIEW OF IMPLEMENTATION OF THE PROPERTY LAWS IN FEDERATION

31 October 2000

MUNICIPALITIES / CANTONS	Socially Owned Property			Private Property			Total			Efficiency	Previous Eff. Ratio	Last Update
	No of Claims	No of Decisions	Repossession	No of Claims	No of Decisions	Repossession	No of Claims	No of Decisions	Repossession			
Fojnica	238	211	179	441	348	344	679	559	523	77.03%	74.00%	Oct-00
Gornji Vakuf	159	106	56	92	60	33	251	166	89	35.46%	32.80%	Oct-00
Jajce	1,582	496	296	374	184	171	1,956	680	467	23.88%	22.34%	Oct-00
Kiseljak	112	75	44	1,781	1,555	1,383	1,893	1,630	1,427	75.38%	68.88%	Oct-00
Kresevo	18	18	14	116	114	102	134	132	116	86.57%	85.61%	Oct-00
Novi Travnik	2,090	1,069	636	882	752	719	2,972	1,821	1,355	45.59%	41.37%	Oct-00
Travnik	1,467	666	583	929	870	856	2,396	1,536	1,439	60.06%	58.35%	Oct-00
Vitez	592	377	319	815	679	541	1,407	1,056	860	61.12%	54.73%	Oct-00
Total CENTRAL BOSNIA:	7,814	3,986	2,636	8,437	6,787	5,982	16,251	10,773	8,618	53.03%	50.01%	
Capljina	740	69	47	819	85	66	1,559	154	113	7.25%	5.65%	Oct-00
Citluk	5	5	5	3	3	3	8	8	8	100.00%	100.00%	Sep-00
Jablanica	166	138	52	61	46	31	227	184	83	36.56%	36.04%	Oct-00
Konjic	824	714	372	580	300	143	1,404	1,014	515	36.68%	34.98%	Oct-00
Mostar Central Zone	468	228	12	71	4	4	539	232	16	2.97%	1.70%	Oct-00
Mostar North	77	33	33	690	184	338	767	217	371	48.37%	48.37%	May-00
Mostar Old Town	1,540	353	101	819	295	92	2,359	648	193	8.18%	6.45%	Oct-00
Mostar South	21	8	0	157	53	20	178	61	20	11.24%	8.00%	Oct-00
Mostar South-East	3	0	0	240	166	88	243	166	88	36.21%	35.32%	Oct-00
Mostar South-West	3,633	270	142	257	12	0	3,890	282	142	3.65%	3.65%	Sep-00
Mostar West	2,442	219	157	132	9	9	2,574	228	166	6.45%	2.34%	Oct-00
Neum	37	36	5	135	113	98	172	149	103	59.88%	57.65%	Oct-00
Prozor/Rama	210	132	105	164	163	139	374	295	244	65.24%	61.23%	Oct-00
Stolac	442	18	7	475	8	8	917	26	15	1.64%	1.64%	Jun-00
Total HERZEGOVINA-NERET	10,608	2,223	1,038	4,603	1,441	1,039	15,211	3,664	2,077	13.65%	12.17%	
Grude	1	1	1	0	0	0	1	1	1	100.00%	100.00%	
Ljubuski	69	59	33	215	131	65	284	190	98	34.51%	30.11%	Oct-00
Posusje	6	4	1	0	0	0	6	4	1	16.67%	0.00%	Oct-00
Total WEST HERZEGOVINA:	76	64	35	215	131	65	291	195	100	34.36%	29.72%	
Centar/Stari Grad	7,085	3,122	873	620	511	138	7,705	3,633	1,011	13.12%	11.49%	Oct-00
Ilidza/Hadzici	3,951	2,626	507	2,195	1,677	587	6,146	4,303	1,094	17.80%	16.21%	Oct-00
Novi Grad	11,123	7,335	2,156	1,033	816	361	12,156	8,151	2,517	20.71%	19.67%	Oct-00
Novo Sarajevo	9,327	5,142	1,452	747	690	336	10,074	5,832	1,788	17.75%	16.77%	Oct-00
Vogosca/Ilijas	2,291	1,379	246	1,325	1,051	469	3,616	2,430	715	19.77%	18.52%	Oct-00
Total SARAJEVO:	33,777	19,604	5,234	5,920	4,745	1,891	39,697	24,349	7,125	17.95%	16.71%	
Bosansko Grahovo	37	12	11	27	15	14	64	27	25	39.06%	37.50%	Oct-00
Drvar	1,811	163	2	1,048	196	89	2,859	359	91	3.18%	0.80%	Oct-00
Glamoc	389	12	6	411	24	21	800	36	27	3.38%	2.82%	Oct-00
Kupres	195	4	4	101	23	23	296	27	27	9.12%	4.21%	Oct-00
Livno	330	153	97	212	83	160	542	236	257	47.42%	45.19%	Oct-00
Tomislavgrad	59	1	1	91	71	67	150	72	68	45.33%	43.15%	Oct-00
Total HERZEG-BOSNIA:	2,821	345	121	1,890	412	374	4,711	757	495	10.51%	8.32%	
Total FEDERATION :	83,192	43,636	17,043	39,246	23,090	14,158	122,438	66,726	31,201	25.48%	24.35%	
%		52%	20%		59%	36%		54%	25%			

Source: Local Authorities / PLIP (Property Legislation Implementation Plan) Focal Points

REVIEW OF IMPLEMENTATION OF THE PROPERTY LAWS IN REPUBLIKA SRPSKA

31 October 2000

MUNICIPALITIES	Socially Owned Property			Private Property			Total			Efficiency Ratio*	Previous Eff. Ratio	Last Update
	No of Claims	No of Decisions	Repossessor	No of Claims	No of Decisions	Repossessor	No of Claims	No of Decisions	Repossessor			
Banja Luka	9,222	1,073	554	6,464	1,264	639	15,686	2,337	1,193	7.61%	6.61%	Oct-00
Berkovici	2	1	0	1	1	0	3	2	0	0.00%	0.00%	Oct-00
Bijeljina	628	134	58	6,750	1,110	878	7,378	1,244	936	12.69%	9.86%	Oct-00
Bileca	130	109	15	192	140	35	322	249	50	15.53%	16.88%	Oct-00
Bratunac	172	49	26	4,121	97	56	4,293	146	82	1.91%	1.15%	Oct-00
Cajnice	91	33	17	766	446	38	857	479	55	6.42%	6.23%	Oct-00
Celinac	58	49	23	279	247	90	337	296	113	33.53%	31.16%	Oct-00
Derвента	1,025	209	134	3,687	440	243	4,712	649	377	8.00%	7.27%	Oct-00
Doboj	2,756	331	166	5,461	735	428	8,217	1,066	594	7.23%	7.23%	May-00
Gacko	266	126	68	458	166	18	724	292	86	11.88%	10.36%	Oct-00
Gradiska	400	241	49	3,863	2,242	841	4,263	2,483	890	20.88%	20.36%	Oct-00
Han Pijesak	56	13	6	134	63	8	190	76	14	7.37%	7.07%	Oct-00
Kalinovik	64	62	26	12	12	1	76	74	27	35.53%	5.12%	Oct-00
Knezevo	71	6	2	257	150	63	328	156	65	19.82%	17.68%	Oct-00
Kostajnica	27	27	7	301	262	140	328	289	147	44.82%	42.06%	Oct-00
Kotor Varos	241	233	53	3,481	2,626	2,171	3,722	2,859	2,224	59.75%	49.29%	Oct-00
Kozarska Dubica	225	76	41	1,418	778	216	1,643	854	257	15.64%	13.16%	Oct-00
Laktasi	31	25	8	442	310	138	473	335	146	30.87%	25.54%	Oct-00
Ljubinje	12	11	4	49	38	4	61	49	8	13.11%	13.11%	Oct-00
Lopare	90	26	18	649	198	197	739	224	215	29.09%	1.00%	Oct-00
Milici	59	37	15	334	30	16	393	67	31	7.89%	7.18%	Oct-00
Modrica	540	533	126	2,926	2,042	129	3,466	2,575	255	7.36%	5.89%	Oct-00
Mrkonjic Grad	180	20	11	549	149	99	729	169	110	15.09%	11.43%	Oct-00
Nevesinje	33	22	14	594	440	109	627	462	123	19.62%	16.64%	Oct-00
Novi Grad	448	188	117	2,890	1,501	347	3,338	1,689	464	13.90%	36.24%	Oct-00
Osmaci	3	0	0	866	370	54	869	370	54	6.21%	3.13%	Oct-00
Pale	215	120	81	1,859	489	245	2,074	609	326	15.72%	13.69%	Oct-00
Pelagicevo	17	14	1	790	637	18	807	651	19	2.35%	2.38%	Oct-00
Petrovo	32	30	13	35	30	20	67	60	33	49.25%	49.23%	Oct-00
Prijedor	1,974	602	245	9,349	2,264	554	11,323	2,866	799	7.06%	6.14%	Oct-00
Prnjavor	155	50	18	1,895	400	257	2,050	450	275	13.41%	12.84%	Oct-00
Ribnik	25	19	18	1	1	1	26	20	19	73.08%	73.08%	Oct-00
Rogatica	421	180	62	1,502	214	44	1,923	394	106	5.51%	3.30%	Oct-00
Rudo	168	81	7	912	525	19	1,080	606	26	2.41%	2.33%	Oct-00
Samac	421	63	72	1,908	326	345	2,329	389	417	17.90%	16.53%	Oct-00
Sekovici	50	35	12	86	45	28	136	80	40	29.41%	25.19%	Oct-00
Sipovo	104	11	1	364	148	85	468	159	86	18.38%	18.38%	Jul-00
Sokolac	78	14	4	679	424	17	757	438	21	2.77%	2.13%	Oct-00
Srbac	58	43	31	146	138	76	204	181	107	52.45%	49.51%	Oct-00
Srbinja	1,180	135	49	2,976	449	12	4,156	584	61	1.47%	1.21%	Oct-00
Srebrenica	534	162	60	3,678	407	20	4,212	569	80	1.90%	1.77%	Oct-00
Srpska Ilidza	877	149	62	528	61	14	1,405	210	76	5.41%	5.38%	Oct-00
Srpski Brod	1,139	407	78	1,257	404	221	2,396	811	299	12.48%	12.17%	Oct-00
Srpsko Gorazde	46	18	2	893	630	31	939	648	33	3.51%	3.05%	Oct-00
Srpsko Novo Sarajevo	8	1	1	246	155	75	254	156	76	29.92%	29.92%	Sep-00
Srpsko Orasje	1	1	1	16	16	16	17	17	17	100.00%	100.00%	Oct-00
Trnovo	87	71	18	130	88	48	217	159	66	30.41%	28.85%	Oct-00
Teslic	741	155	83	3,147	951	248	3,888	1,106	331	8.51%	6.98%	Oct-00
Trebinje	767	210	102	804	157	67	1,571	367	169	10.76%	14.09%	Oct-00
Ugljevik	133	43	15	438	43	18	571	86	33	5.78%	3.93%	Oct-00

REVIEW OF IMPLEMENTATION OF THE PROPERTY LAWS IN REPUBLIKA SRPSKA

31 October 2000

MUNICIPALITIES	Socially Owned Property			Private Property			Total			Efficiency Ratio*	Previous Eff. Ratio	Last Update
	No of Claims	No of Decisions	Repossession	No of Claims	No of Decisions	Repossession	No of Claims	No of Decisions	Repossession			
Visegrad	501	190	51	1,884	496	17	2,385	686	68	2.85%	2.51%	Oct-00
Vlasenica	347	102	64	1,197	296	129	1,544	398	193	12.50%	10.06%	Oct-00
Vukosavlje	3	0	0	1,243	898	248	1,246	898	248	19.90%	19.90%	Aug-00
Zvornik	1,433	193	101	4,749	144	58	6,182	337	159	2.57%	2.04%	Oct-00
Total RS :	28,345	6,733	2,810	89,656	26,693	9,889	118,001	33,426	12,699	10.76%	10.01%	
%		24%	10%		30%	11%		28%	11%			

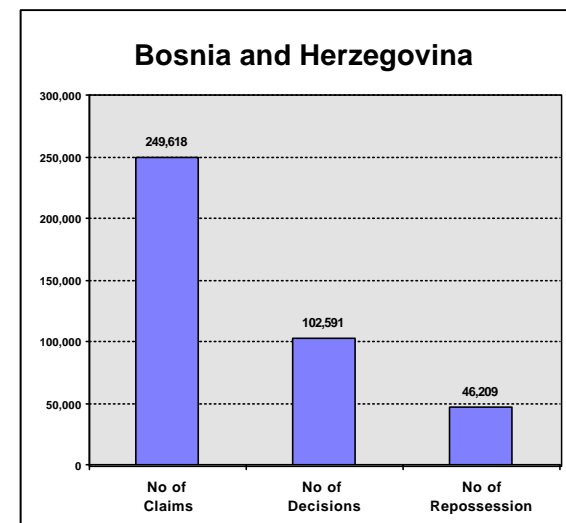
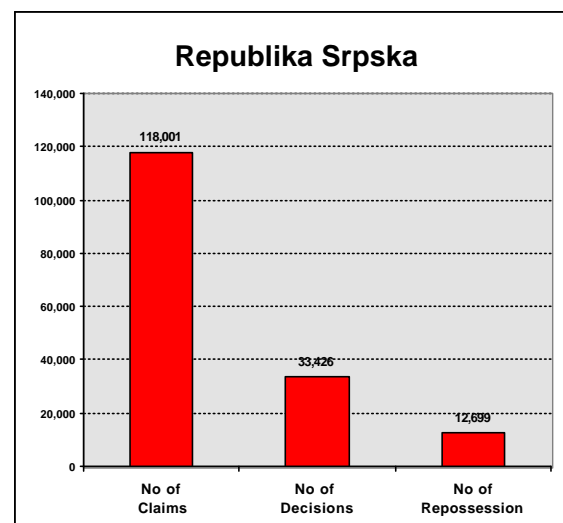
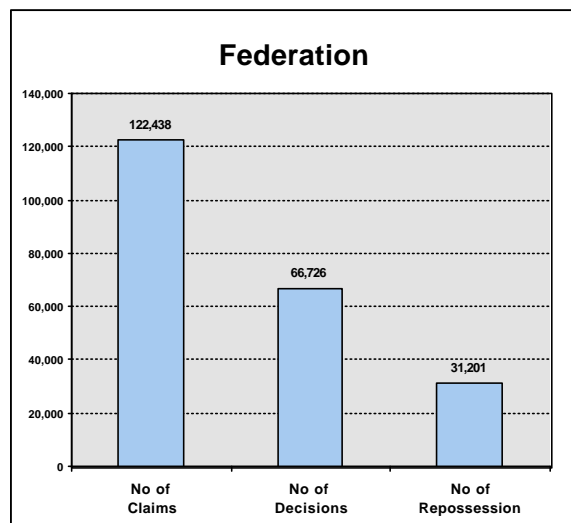
* Efficiency Ratio = Total number of repossessions / Total number of claims

IMPLEMENTATION OF THE PROPERTY LAWS IN BOSNIA AND HERZEGOVINA - SUMMARY

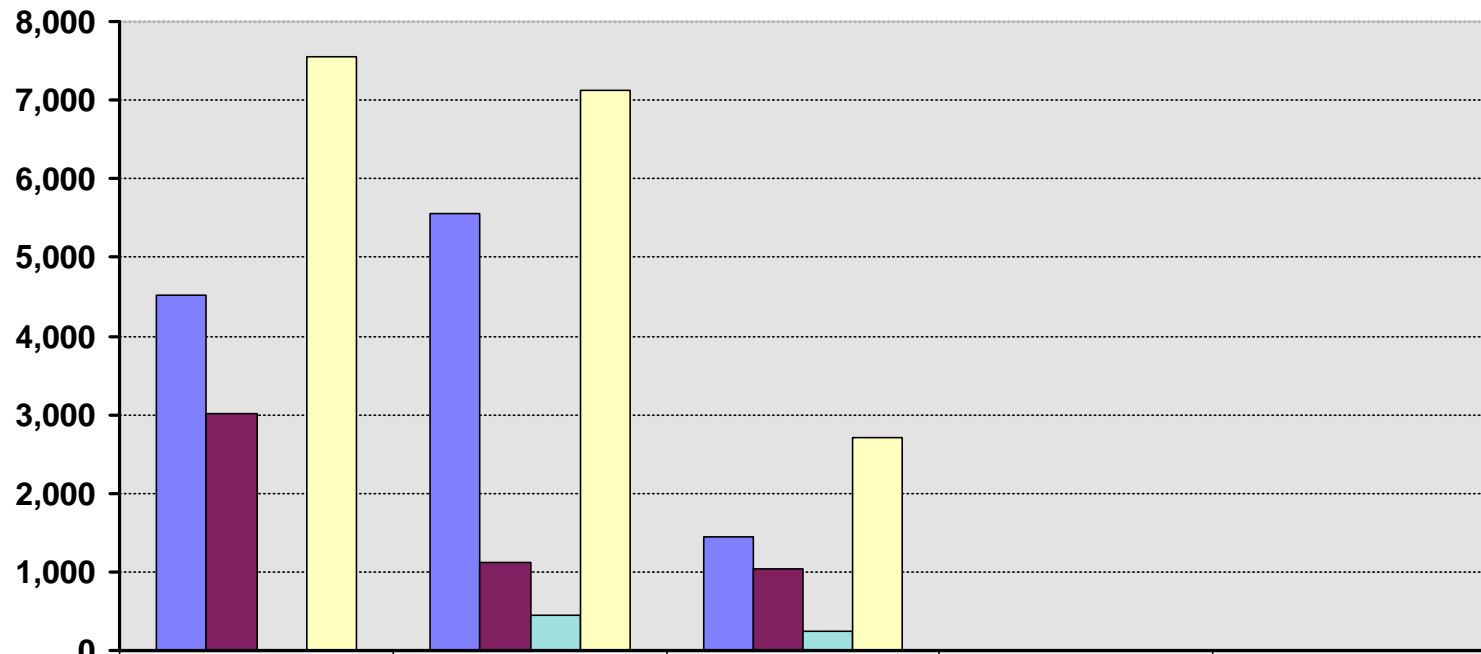
31 October 2000

Bosnia and Herzegovina	Socially Owned Property			Private Property			Total			Efficiency Ratio *	Previous Efficiency Ratio
	No of Claims	No of Decisions	Repossession	No of Claims	No of Decisions	Repossession	No of Claims	No of Decisions	No of Repossession		
Total FEDERATION :	83,192	43,636	17,043	39,246	23,090	14,158	122,438	66,726	31,201	25%	24%
%		52%	20%		59%	36%		54%	25%		
Total REPUBLIKA SRPSKA :	28,345	6,733	2,810	89,656	26,693	9,889	118,001	33,426	12,699	11%	10%
%		24%	10%		30%	11%		28%	11%		
District BRCKO :	2,146	491	471	7,033	1,948	1,838	9,179	2,439	2,309	25%	24%
%		23%	22%		28%	26%		27%	25%		
GRAND TOTAL :	113,683	50,860	20,324	135,935	51,731	25,885	249,618	102,591	46,209	19%	18%
%		45%	18%		38%	19%		41%	19%		

* Efficiency Ratio = Total number of repossessions / Total number of claims



Repossessions by month



	June/July	Aug/Sept	October	November	December
■ Federation	4,527	5,553	1,437		
■ Republika Srpska	3,021	1,127	1,037		
■ Brcko District		439	235		
■ Total BiH	7,548	7,119	2,709		

