

A large, stylized graphic of a key, rendered in yellow and grey, positioned centrally behind the title text. The key is oriented vertically, with the head at the top and the bit at the bottom. The background behind the key consists of overlapping yellow and blue shapes.

STATISTICS

IMPLEMENTATION OF THE PROPERTY LAWS IN BOSNIA AND HERZEGOVINA

31 March 2002

EXPLANATORY NOTE

- **These statistics reflect the implementation of the property laws in Bosnia and Herzegovina since the passing of the property laws as amended in October 1999.**
- **These statistics are collected every month by staff of OSCE, UNHCR and OHR in the field on the basis of information provided to them by local authorities.**
- **The number of claims is equal to the total number of properties on which a claim was filed with the Municipal authorities.**
- **The number of decisions is the total number of decisions issued by the Municipal authorities.**
- **The number of repossessions is the total number of occupancy right holders or owners that have collected their keys from the municipal authorities.**
- **The implementation ratio is the total number of repossessions divided by the total number of claims expressed in percentage form.**
- **These statistics do not include information on decisions and repossessions on destroyed property, business premises or land.**
- **In some municipalities, the current implementation ratio is lower than the implementation ratio as at the end of 2000. This is due to the exclusion of destroyed property from the number of repossessions, but not from the number of claims.**
- **In some municipalities, the number of claims for socially owned property has increased since last month regardless of the deadline for submission of claims for socially owned property. This is due to the filing of requests for the enforcement of CRPC claims .**

REVIEW OF IMPLEMENTATION OF THE PROPERTY LAWS IN FEDERATION OF BiH

31 March 2002

MUNICIPALITIES / CANTONS	Socially Owned Property			Private Property			Total			Implement-ation Ratio*	Previous Impl. Ratio	Implementatin Ratio		Last Update
	No.of Claims	No.of Decisions	Repossessions	No.of Claims	No.of Decisions	Repossessions	No.of Claims	No.of Decisions	Repossessions			end 2001	end 2000	
Bihac	1,620	1,618	1,013	1,270	960	514	2,890	2,578	1,527	52.84%	52.16%	56.26%	38.31%	Mar-02
Bosanska Krupa	483	451	343	1,841	1,146	775	2,324	1,597	1,118	48.11%	49.25%	55.67%	29.29%	Mar-02
Bosanski Petrovac	461	457	353	980	857	768	1,441	1,314	1,121	77.79%	78.33%	76.92%	45.51%	Mar-02
Buzim	7	7	7	1	1	1	8	8	8	100.00%	100.00%	100.00%	25.00%	Aug-01
Cazin	107	107	78	84	72	48	191	179	126	65.97%	65.97%	66.29%	60.47%	Mar-02
Kljuc	855	823	487	981	956	404	1,836	1,779	891	48.53%	48.58%	47.09%	24.46%	Mar-02
Sanski Most	985	922	676	3,211	2,141	1,086	4,196	3,063	1,762	41.99%	42.50%	41.51%	24.90%	Mar-02
Velika Kladusa	438	427	272	48	38	35	486	465	307	63.17%	70.92%	70.92%	70.92%	Mar-02
Total UNA-SANA:	4,956	4,812	3,229	8,416	6,171	3,631	13,372	10,983	6,860	51.30%	51.86%	53.12%	32.80%	
Domaljevac - Samac	9	9	9	4	4	3	13	13	12	92.31%	92.31%	83.33%	33.33%	Mar-02
Odzak	234	232	206	215	156	119	449	388	325	72.38%	72.87%	77.69%	28.04%	Mar-02
Orasje	159	159	146	152	152	114	311	311	260	83.60%	70.66%	64.62%	43.75%	Mar-02
Total POSAVINA:	402	400	361	371	312	236	773	712	597	77.23%	72.29%	72.01%	34.06%	
Banovici	1,025	1,066	737	72	72	46	1,097	1,138	783	71.38%	69.46%	63.43%	31.69%	Mar-02
Celic	40	40	30	181	181	176	221	221	206	93.21%	93.15%	77.00%	69.15%	Mar-02
Doboj - East	0	0	0	10	10	10	10	10	10	100.00%	100.00%	100.00%	55.56%	Oct-01
Gracanica	246	232	212	596	527	367	842	759	579	68.76%	67.70%	68.16%	43.62%	Mar-02
Gradacac	251	251	231	399	375	212	650	626	443	68.15%	69.13%	69.33%	53.14%	Mar-02
Kalesija	111	111	104	975	975	828	1,086	1,086	932	85.82%	84.26%	83.86%	32.57%	Mar-02
Kladanj	171	171	127	166	87	25	337	258	152	45.10%	42.22%	44.65%	16.31%	Mar-02
Lukavac	794	791	746	1,424	847	106	2,218	1,638	852	38.41%	38.07%	37.17%	31.65%	Mar-02
Sapna	23	23	15	117	117	48	140	140	63	45.00%	45.00%	43.07%	40.16%	Mar-02
Srebrenik	78	78	51	949	636	205	1,027	714	256	24.93%	22.13%	17.78%	21.46%	Mar-02
Teocak	7	6	5	8	7	6	15	13	11	73.33%	73.33%	29.63%	6.67%	Mar-02
Tuzla	5,487	4,320	3,088	2,375	1,555	1,049	7,862	5,875	4,137	52.62%	50.23%	48.10%	23.20%	Mar-02
Zivinice	414	376	325	635	354	305	1,049	730	630	60.06%	58.59%	62.78%	42.39%	Mar-02
Total TUZLA:	8,647	7,465	5,671	7,907	5,743	3,383	16,554	13,208	9,054	54.69%	52.96%	50.48%	29.30%	
Breza	238	238	175	379	298	116	617	536	291	47.16%	48.24%	53.97%	55.44%	Mar-02
Doboj - South	0	0	0	15	15	14	15	15	14	93.33%	93.33%	93.33%	73.33%	Oct-01
Kakanj	1,086	896	652	1,090	614	340	2,176	1,510	992	45.59%	45.21%	48.52%	37.28%	Mar-02
Maglaj	619	619	595	1,863	1,498	1,275	2,482	2,117	1,870	75.34%	73.42%	75.42%	27.77%	Mar-02
Olovo	227	227	127	199	130	63	426	357	190	44.60%	44.36%	45.60%	16.33%	Mar-02
Tesanj	157	157	125	468	445	323	625	602	448	71.68%	69.34%	70.68%	46.20%	Mar-02
Usora	3	3	3	10	9	9	13	12	12	92.31%	92.31%	76.92%	87.50%	Feb-02
Vares	960	960	781	30	30	25	990	990	806	81.41%	78.36%	76.35%	52.96%	Mar-02
Visoko	334	333	221	1,729	1,475	322	2,063	1,808	543	26.32%	25.81%	29.58%	30.81%	Mar-02
Zavidovici	1,180	995	824	2,741	863	789	3,921	1,858	1,613	41.14%	45.24%	30.82%	22.30%	Mar-02
Zenica	5,775	4,312	2,996	1,707	1,097	522	7,482	5,409	3,518	47.02%	45.70%	44.40%	21.45%	Mar-02
Zepce	322	322	320	1,244	1,222	1,138	1,566	1,544	1,458	93.10%	90.48%	84.05%	84.05%	Mar-02
Total ZENICA-DOBOJ:	10,901	9,062	6,819	11,475	7,696	4,936	22,376	16,758	11,755	52.53%	52.40%	50.84%	32.19%	
Foca - Ustikolina	50	50	44	89	89	62	139	139	106	76.26%	21.32%	16.52%	5.91%	Mar-02
Gorazde	1,246	1,246	722	271	242	184	1,517	1,488	906	59.72%	55.78%	51.06%	19.98%	Mar-02
Pale - Praca	2	2	2	5	5	5	7	7	7	100.00%	100.00%	100.00%	22.73%	Jun-01
Total BOSNIA-PODRINJE:	1,298	1,298	768	365	336	251	1,663	1,634	1,019	61.27%	47.81%	43.10%	17.69%	
Bugojno	1,060	884	826	2,606	2,355	2,069	3,666	3,239	2,895	78.97%	79.27%	82.09%	56.34%	Mar-02
Busovaca	102	102	102	677	672	652	779	774	754	96.79%	97.41%	98.68%	70.27%	Mar-02
Donji Vakuf	339	337	215	756	445	182	1,095	782	397	36.26%	38.03%	32.18%	26.24%	Mar-02

Source: Local Authorities / PLIP (Property Legislation Implementation Plan) Focal Points

REVIEW OF IMPLEMENTATION OF THE PROPERTY LAWS IN FEDERATION OF BiH

31 March 2002

MUNICIPALITIES / CANTONS	Socially Owned Property			Private Property			Total			Implement-ation Ratio*	Previous Impl. Ratio	Implementatin Ratio		Last Update
	No.of Claims	No.of Decisions	Repossessions	No.of Claims	No.of Decisions	Repossessions	No.of Claims	No.of Decisions	Repossessions			end 2001	end 2000	
Fojnica	236	236	220	453	418	415	689	654	635	92.16%	92.16%	87.37%	81.59%	Mar-02
Gornji Vakuf - Uskoplje	174	158	133	167	142	87	341	300	220	64.52%	56.85%	56.79%	36.58%	Mar-02
Jajce	1,595	1,069	831	1,638	687	591	3,233	1,756	1,422	43.98%	41.28%	47.05%	26.93%	Mar-02
Kiseljak	112	110	69	1,932	1,944	1,864	2,044	2,054	1,933	94.57%	93.91%	93.46%	81.57%	Mar-02
Kresevo	18	18	18	130	130	126	148	148	144	97.30%	97.30%	95.95%	88.81%	Mar-02
Novi Travnik	2,090	2,029	1,615	313	309	283	2,403	2,338	1,898	78.98%	73.69%	71.75%	40.91%	Mar-02
Travnik	1,467	1,450	931	1,578	1,192	1,063	3,045	2,642	1,994	65.48%	65.99%	69.89%	63.37%	Mar-02
Vitez	592	537	515	722	713	698	1,314	1,250	1,213	92.31%	91.67%	91.91%	67.34%	Mar-02
Total CENTRAL BOSNIA:	7,785	6,930	5,475	10,972	9,007	8,030	18,757	15,937	13,505	72.00%	71.05%	73.26%	55.81%	
Capljina	740	426	360	1,034	559	524	1,774	985	884	49.83%	47.94%	44.72%	7.25%	Mar-02
Citluk	5	5	5	3	3	3	8	8	8	100.00%	100.00%	100.00%	100.00%	Sep-00
Jablanica	169	164	97	302	104	83	471	268	180	38.22%	37.93%	59.35%	40.61%	Mar-02
Konjic	841	790	754	1,000	755	532	1,841	1,545	1,286	69.85%	64.39%	68.52%	41.92%	Mar-02
Mostar - North	76	58	22	1,513	755	580	1,589	813	602	37.89%	33.10%	28.86%	4.05%	Mar-02
Mostar - South	24	20	0	280	222	61	304	242	61	20.07%	20.27%	21.76%	48.37%	Mar-02
Mostar - West	2,457	1,404	1,145	169	25	21	2,626	1,429	1,166	44.40%	41.88%	36.96%	11.29%	Mar-02
Mostar Central Zone	506	429	117	103	50	28	609	479	145	23.81%	23.24%	21.63%	12.09%	Mar-02
Mostar Old Town	1,579	1,150	666	1,033	849	366	2,612	1,999	1,032	39.51%	37.00%	33.26%	35.38%	Mar-02
Mostar South-East	3	1	0	620	429	261	623	430	261	41.89%	41.89%	61.23%	8.65%	Feb-02
Mostar South-West	3,801	2,227	1,597	305	120	86	4,106	2,347	1,683	40.99%	38.31%	32.56%	10.14%	Mar-02
Neum	28	28	20	168	156	147	196	184	167	85.20%	84.66%	82.45%	59.88%	Mar-02
Prozor / Rama	210	210	198	171	168	143	381	378	341	89.50%	89.24%	88.92%	76.53%	Mar-02
Stolac	443	379	263	578	380	331	1,021	759	594	58.18%	52.82%	50.85%	1.64%	Mar-02
Total HERZEGOVINA-NERETVA:	10,882	7,291	5,244	7,279	4,575	3,166	18,161	11,866	8,410	46.31%	43.43%	41.11%	16.84%	
Grude	5	2	0	0	0	0	5	0	2	0.00%	0.00%	0.00%	0.00%	Mar-02
Ljubuski	69	59	49	237	235	167	306	294	216	70.59%	68.75%	65.55%	43.25%	Mar-02
Posusje	5	3	2	0	0	0	5	3	2	40.00%	40.00%	40.00%	16.67%	Mar-02
Siroki Brijeg	0	0	0	3	0	0	3	0	0	0.00%	0.00%	0.00%	0.00%	Mar-02
Total WEST HERZEGOVINA:	79	64	51	240	235	167	319	299	218	68.34%	66.56%	65.25%	42.91%	
Centar / Stari Grad	5,861	3,653	2,307	1,041	927	341	6,902	4,580	2,648	38.37%	36.93%	33.24%	13.22%	Mar-02
Ilidza / Hadzici	4,223	4,223	1,658	3,501	2,664	1,117	7,724	6,887	2,775	35.93%	35.04%	35.77%	22.14%	Mar-02
Novi Grad	10,185	9,774	5,135	1,980	1,638	1,204	12,165	11,412	6,339	52.11%	51.17%	49.54%	24.42%	Mar-02
Novo Sarajevo	9,434	9,701	3,924	1,200	1,134	783	10,634	10,835	4,707	44.26%	43.14%	42.75%	22.26%	Mar-02
Vogosca / Ilijas	3,383	3,383	905	2,912	2,478	919	6,295	5,861	1,824	28.98%	28.35%	33.74%	23.05%	Mar-02
Total SARAJEVO:	33,086	30,734	13,929	10,634	8,841	4,364	43,720	39,575	18,293	41.84%	40.89%	40.92%	21.44%	
Bosansko Grahovo	41	38	31	156	25	24	197	63	55	27.92%	27.92%	27.92%	42.19%	Sep-01
Drvar	1,244	486	455	1,811	1,278	913	3,055	1,764	1,368	44.78%	40.07%	37.39%	5.53%	Mar-02
Glamoc	439	264	161	602	227	176	1,041	491	337	32.37%	31.69%	29.05%	4.59%	Mar-02
Kupres	275	203	144	184	164	149	459	367	293	63.83%	61.44%	59.77%	10.40%	Mar-02
Livno	330	290	253	295	256	237	625	546	490	78.40%	81.77%	76.67%	53.75%	Mar-02
Tomislavgrad	59	42	40	98	82	85	157	124	125	79.62%	77.40%	71.34%	46.67%	Mar-02
Total CANTON 10:	2,388	1,323	1,084	3,146	2,032	1,584	5,534	3,355	2,668	48.21%	45.46%	42.83%	12.90%	
Total FEDERATION :	80,424	69,379	42,631	60,805	44,948	29,748	141,229	114,327	72,379	51.25%	49.98%	49.40%	28.75%	
%		86%	53%		74%	49%		81%	51%					

* Implementation Ratio = Total number of repossessions / Total number of claims expressed in percentage form

Source: Local Authorities / PLIP (Property Legislation Implementation Plan) Focal Points

REVIEW OF IMPLEMENTATION OF THE PROPERTY LAWS IN REPUBLIKA SRPSKA

28 February 2002

MUNICIPALITIES	Socially Owned Property			Private Property			Total			Implement-ation Ratio*	Previous Impl. Ratio	Implementation Ratio		Last Update
	No.of Claims	No.of Decisions	Repossessions	No.of Claims	No.of Decisions	Repossessions	No.of Claims	No.of Decisions	Repossessions			end 2001	end 2000	
Banja Luka	9,222	4,078	2,638	7,618	2,785	2,238	16,840	6,863	4,876	28.95%	27.16%	24.86%	8.56%	Mar-02
B.Dubica / Kozarska Dubica	207	163	102	1,122	905	625	1,329	1,068	727	54.70%	52.57%	49.96%	17.95%	Mar-02
B.Gradiska / Gradiska	400	397	239	4,419	2,119	1,977	4,819	2,516	2,216	45.98%	43.94%	42.17%	22.85%	Mar-02
B.Novi / Novi Grad	504	454	340	1,197	1,098	848	1,701	1,552	1,188	69.84%	68.48%	65.13%	16.84%	Mar-02
B.Samac / Samac	407	334	300	1,266	770	587	1,673	1,104	887	53.02%	50.50%	47.33%	18.77%	Mar-02
Berkovici	1	1	1	5	5	4	6	6	5	83.33%	100.00%	80.00%	0.00%	Mar-02
Bijeljina	639	400	274	8,177	3,583	3,421	8,816	3,983	3,695	41.91%	39.85%	36.96%	15.68%	Mar-02
Bileca	134	131	90	289	265	174	423	396	264	62.41%	61.74%	61.03%	23.44%	Mar-02
Bosanska / Srpska Kostajnica	27	27	9	333	332	248	360	359	257	71.39%	69.72%	69.01%	47.60%	Mar-02
Bosanski / Srpski Brod	1,013	863	444	836	556	370	1,849	1,419	814	44.02%	28.83%	21.48%	12.93%	Mar-02
Bratunac	166	142	95	2,497	771	423	2,663	913	518	19.45%	17.57%	15.77%	3.54%	Mar-02
Cajnice	94	89	59	220	213	81	314	302	140	44.59%	43.73%	39.20%	4.45%	Mar-02
Celinac	59	55	38	248	244	139	307	299	177	57.65%	55.41%	51.48%	34.60%	Mar-02
Derвента	1,098	701	570	4,600	1,457	1,078	5,698	2,158	1,648	28.92%	27.34%	24.27%	9.32%	Mar-02
Doboj	2,784	1,601	1,657	6,221	2,784	1,951	9,005	4,385	3,608	40.07%	39.41%	37.91%	15.60%	Mar-02
Foca / Srbinje	1,049	1,026	510	2,067	956	323	3,116	1,982	833	26.73%	24.06%	24.20%	2.04%	Mar-02
Gacko	272	235	192	323	184	68	595	419	260	43.70%	41.57%	39.68%	14.23%	Mar-02
Han Pijesak	59	58	39	1	1	0	60	59	39	65.00%	63.33%	56.25%	10.19%	Mar-02
Kalinovik	64	64	48	28	28	16	92	92	64	69.57%	68.48%	64.13%	39.19%	Mar-02
Kotor Varos	383	280	170	1,485	1,222	748	1,868	1,502	918	49.14%	48.28%	47.96%	63.65%	Mar-02
Laktasi	31	31	20	545	523	306	576	554	326	56.60%	54.73%	55.45%	37.14%	Mar-02
Ljubinja	12	12	11	72	71	21	84	83	32	38.10%	29.76%	22.37%	14.52%	Mar-02
Lopare	95	95	82	724	723	658	819	818	740	90.35%	87.98%	75.53%	33.07%	Mar-02
Milici	62	58	33	168	162	59	230	220	92	40.00%	39.19%	7.86%	7.86%	Mar-02
Modrica	525	525	246	2,286	2,286	942	2,811	2,811	1,188	42.26%	40.64%	39.01%	10.13%	Mar-02
Mrkonjic Grad	182	175	163	699	601	425	881	776	588	66.74%	63.26%	61.27%	18.69%	Mar-02
Nevesinje	33	30	30	921	862	447	954	892	477	50.00%	49.30%	33.92%	24.81%	Mar-02
Odzak / Vukosavlje	0	0	0	465	465	378	465	465	378	81.29%	79.11%	77.92%	19.90%	Mar-02
Osmaci	3	3	2	272	278	164	275	281	166	60.36%	57.66%	30.29%	8.58%	Mar-02
Pale	208	210	140	572	555	303	780	765	443	56.79%	56.07%	53.34%	19.44%	Mar-02
Pelagicevo	7	7	2	154	154	50	161	161	52	32.30%	26.71%	22.36%	16.39%	Mar-02
Petrovo	32	32	24	66	59	49	98	91	73	74.49%	72.83%	66.29%	51.47%	Mar-02
Prijedor	2,015	1,310	1,006	8,669	3,101	2,628	10,684	4,411	3,634	34.01%	27.03%	24.52%	8.94%	Mar-02
Prnjavor	155	131	84	2,073	1,244	756	2,228	1,375	840	37.70%	34.76%	33.48%	15.60%	Mar-02
Ribnik / Kljuc	25	22	21	8	6	4	33	28	25	75.76%	80.65%	80.65%	73.08%	Mar-02
Rogatica	388	386	235	1,763	579	369	2,151	965	604	28.08%	26.01%	24.32%	6.61%	Mar-02
Rudo	170	170	138	682	535	167	852	705	305	35.80%	35.02%	32.07%	3.49%	Mar-02
Sekovici	51	51	38	97	97	69	148	148	107	72.30%	68.46%	70.63%	38.41%	Mar-02
Sipovo	108	80	34	483	355	184	591	435	218	36.89%	40.11%	37.79%	28.66%	Mar-02
Skender Vakuf / Knezevo	78	78	23	267	256	164	345	334	187	54.20%	52.17%	49.57%	23.17%	Mar-02
Sokolac	81	77	35	507	479	161	588	556	196	33.33%	31.26%	26.57%	11.27%	Mar-02
Srbac	60	60	57	156	156	126	216	216	183	84.72%	81.48%	78.87%	53.88%	Mar-02
Srebrenica	535	464	318	1,915	533	158	2,450	997	476	19.43%	9.01%	8.29%	2.18%	Mar-02
Srpska Ilidza	262	262	136	621	569	265	883	831	401	45.41%	43.20%	23.78%	9.31%	Mar-02
Srpsko Gorazde	11	8	5	372	378	107	383	386	112	29.24%	25.39%	21.20%	3.61%	Mar-02
Srpsko Novo Sarajevo	8	4	2	361	353	272	369	357	274	74.25%	74.52%	73.31%	33.81%	Mar-02

REVIEW OF IMPLEMENTATION OF THE PROPERTY LAWS IN REPUBLIKA SRPSKA

28 February 2002

MUNICIPALITIES	Socially Owned Property			Private Property			Total			Implement- ation Ratio*	Previous Impl. Ratio	Implementation Ratio		Last Update
	No.of Claims	No.of Decisions	Repossessions	No.of Claims	No.of Decisions	Repossessions	No.of Claims	No.of Decisions	Repossessions			end 2001	end 2000	
Srpsko Orasje	1	1	1	16	16	16	17	17	17	100.00%	100.00%	100.00%	100.00%	Mar-02
Teslic	741	611	485	1,871	1,343	1,063	2,612	1,954	1,548	59.26%	31.55%	34.10%	12.08%	Mar-02
Trebinje	740	639	467	1,037	582	412	1,777	1,221	879	49.47%	46.32%	42.18%	12.81%	Mar-02
Trnovo RS	89	84	48	313	303	246	402	387	294	73.13%	70.99%	44.16%	41.23%	Mar-02
Ugljevik	133	132	108	550	422	226	683	554	334	48.90%	46.15%	38.55%	9.20%	Mar-02
Visegrad	500	470	297	2,028	542	412	2,528	1,012	709	28.05%	22.40%	22.20%	3.67%	Mar-02
Vlasenica	347	305	231	1,403	853	506	1,750	1,158	737	42.11%	40.90%	21.88%	16.58%	Mar-02
Zvornik	1,170	728	505	4,988	1,450	971	6,158	2,178	1,476	23.97%	18.39%	16.18%	3.15%	Mar-02
Total RS :	27,440	18,350	12,842	80,076	41,169	28,403	107,516	59,519	41,245	38.36%	33.63%	30.64%	13.21%	
%		67%	47%		51%	35%		55%	38%					

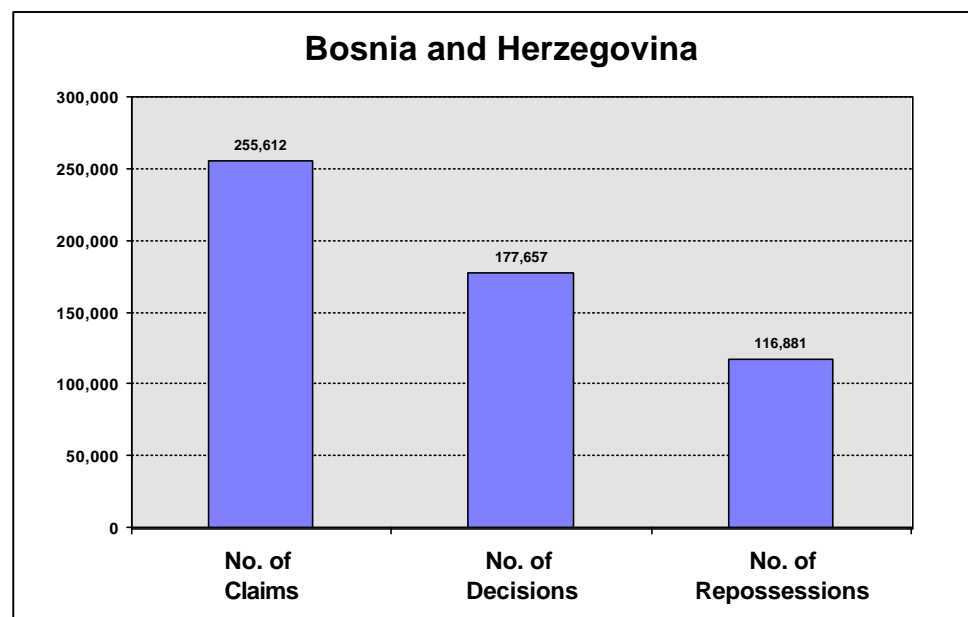
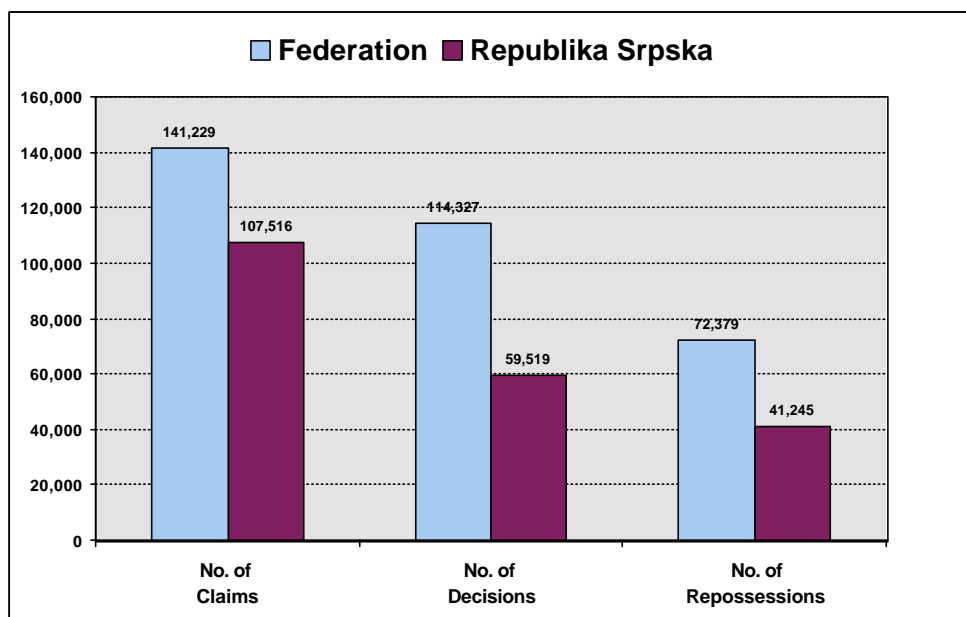
* Implementation Ratio = Total number of repossessions / Total number of claims expressed in percentage form

IMPLEMENTATION OF THE PROPERTY LAWS IN BOSNIA AND HERZEGOVINA - SUMMARY

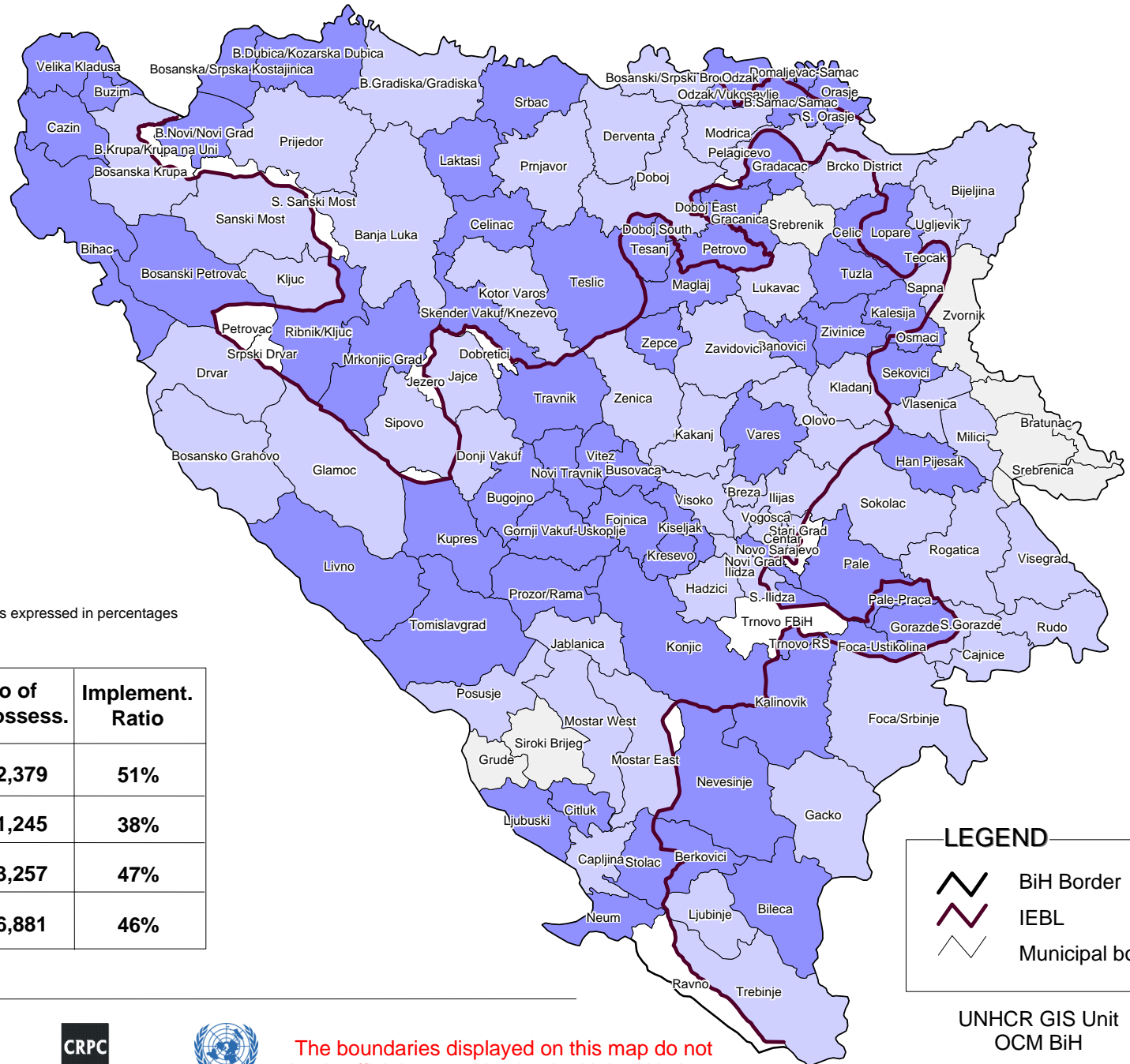
31 March 2002

Bosnia and Herzegovina	Socially Owned Property			Private Property			Total			Implement-ation Ratio*	Previous Implement. Ratio	Implementation Ratio	
	No. of Claims	No. of Decisions	No. of Repossession s	No. of Claims	No. of Decisions	No. of Repossession s	No. of Claims	No. of Decisions	No. of Repossession s			as at end 2001	as at end 2000
Total FEDERATION :	80,424	69,379	42,631	60,805	44,948	29,748	141,229	114,327	72,379	51%	50%	49%	29%
%		86%	53%		74%	49%		81%	51%				
Total REPUBLIKA SRPSKA :	27,440	18,350	12,842	80,076	41,169	28,403	107,516	59,519	41,245	38%	34%	31%	13%
%		67%	47%		51%	35%		55%	38%				
BRCKO DISTRICT :	2,092	1,309	1,210	4,775	2,502	2,047	6,867	3,811	3,257	47%	45%	39%	14%
%		63%	58%		52%	43%		55%	47%				
GRAND TOTAL :	109,956	89,038	56,683	145,656	88,619	60,198	255,612	177,657	116,881	46%	43%	41%	21%
%		81%	52%		61%	41%		70%	46%				

* Implementation Ratio = Total number of repossessions / Total number of claims expressed in percentage form



IMPLEMENTATION OF THE PROPERTY LAWS IN BOSNIA AND HERZEGOVINA



Implementation Ratio *

- more than 50%
- 25% to 50%
- less than 25%
- w/o claims

* Implementation Ratio = Number of repossessions / Number of claims expressed in percentages

	No of Claims	No of Repossess.	Implement. Ratio
Federation of BiH (FBiH)	141,229	72,379	51%
Republika Srpska (RS)	107,516	41,245	38%
Brcko District	6,867	3,257	47%
Total BiH	255,612	116,881	46%

LEGEND

- BiH Border
- IEBL
- Municipal border



The boundaries displayed on this map do not imply official recognition by the United Nations

UNHCR GIS Unit
OCM BiH
Date: 31 March 2002